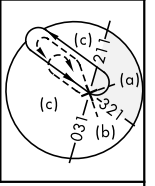
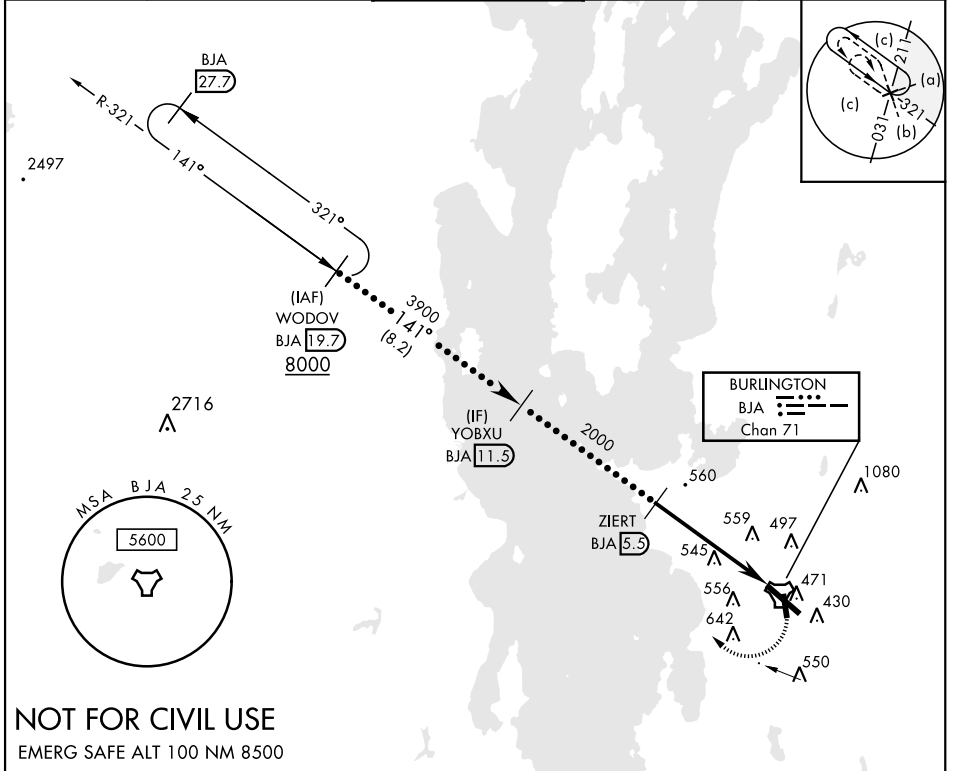


# HI-TACAN RWY 15

TACAN BJA Chan <b>71</b>	APCH CRS <b>141°</b>	Rwy ldg TDZE <b>7820</b> 326 Arpt Elev <b>335</b>	AL-70 [USAF]	PATRICK LEAHY BURLINGTON INTL (KBTV)
<p><b>V</b> * When ALS inop, increase CAT CDE vis to 1 3/8 mile.</p> <p><b>A</b></p>			MALSRL <b>A5</b>	MISSED APPROACH: Climbing right turn to 8000 on BJA R-321 to WODOV / BJA 19.7 DME and hold, continue climb-in-hold to 8000.

ATIS <b>123.8 269.9</b>	APP CON <b>121.1 278.8</b>	TOWER ★ <b>118.3 (CTAF) 0257.8</b>	GND CON <b>126.3 348.6</b>	CLNC DEL <b>119.15</b>
----------------------------	-------------------------------	---------------------------------------	-------------------------------	---------------------------



**NOT FOR CIVIL USE**  
EMERG SAFE ALT 100 NM 8500

WODOV 19.7	8000	141°	YOBXU 11.5	3900	ZIERT 5.5	2000	TACAN	ZIBVO 1.9	ZIERT 5.5	ELEV 335	D	TDZE 326	
										<p>Rwy 1 ldg 3386'</p> <p>Rwy 19 ldg 3386'</p> <p>Rwy 15 ldg 7820'</p> <p>Rwy 33 ldg 7819'</p>			
CATEGORY	C		D		E								
S-15*	820/50		494		(500-1)								
CIRCLING	1220-2 3/4 885 (900-2 3/4)		1380-3 1045 (1100-3)		1500-3 1165 (1200-3)			MIRL Rwy 1-19 (L) HIRL Rwy 15-33 (L)					

# HI-TACAN RWY 15

NE-1, 23 JAN 2025 to 20 FEB 2025

NE-1, 23 JAN 2025 to 20 FEB 2025