

(ALCOS6.ALCOS) 23334  
**ALCOS SIX DEPARTURE**

AL-72 (FAA)

CASPER/NATRONA COUNTY INTL (CPR)  
 CASPER, WYOMING

ATIS  
 126.15  
 CLNC DEL  
 121.9 257.8  
 GND CON  
 121.9  
 CASPER TOWER ★  
 118.3 (CTAF) 257.8  
 CASPER DEP CON ★  
 120.65 354.1  
 DENVER CENTER  
 135.6 363.025

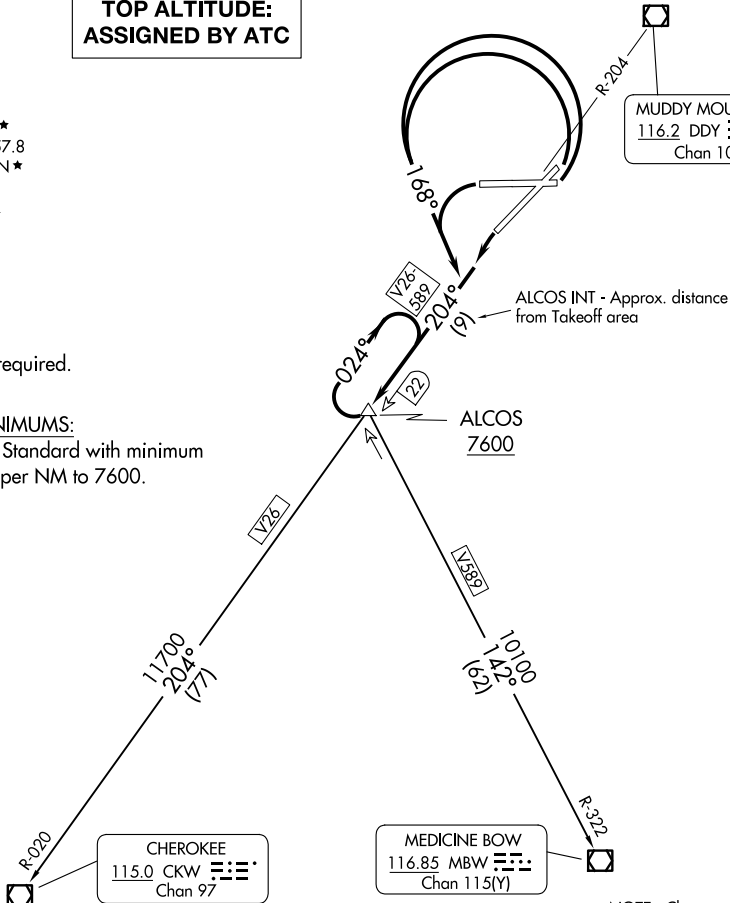
**TOP ALTITUDE:  
 ASSIGNED BY ATC**

MUDDY MOUNTAIN  
 116.2 DDY   
 Chan 109

NOTE: DME required.

**TAKEOFF MINIMUMS:**

All Runways: Standard with minimum  
 climb of 300' per NM to 7600.



NOTE: Chart not to scale.

**DEPARTURE ROUTE DESCRIPTION**

TAKEOFF RUNWAYS 3, 8, 26: Turn left heading 168°, thence. . .

TAKEOFF RUNWAY 21: Turn left, thence. . .

. . . climb on DDY VOR/DME R-204 to cross ALCOS INT 22 DME at or above 7600,  
 climb-in-hold to MEA for direction of flight, then via (transition) or (assigned route).

CHEROKEE TRANSITION (ALCOS6.CKW): From over ALCOS on DDY R-204 and  
 CKW R-020 to CKW VOR/DME.

MEDICINE BOW TRANSITION (ALCOS6.MBW): From over ALCOS on MBW R-322 to  
 MBW VOR/DME.

**ALCOS SIX DEPARTURE**  
 (ALCOS6.ALCOS) 21JUL16

CASPER, WYOMING  
 CASPER/NATRONA COUNTY INTL (CPR)

NW-1, 23 JAN 2025 to 20 FEB 2025

NW-1, 23 JAN 2025 to 20 FEB 2025