

LOC I-SYD 111.3	APP CRS 032°	Rwy ldg 10165
		TDZE 5328
		Apt Elev 5344

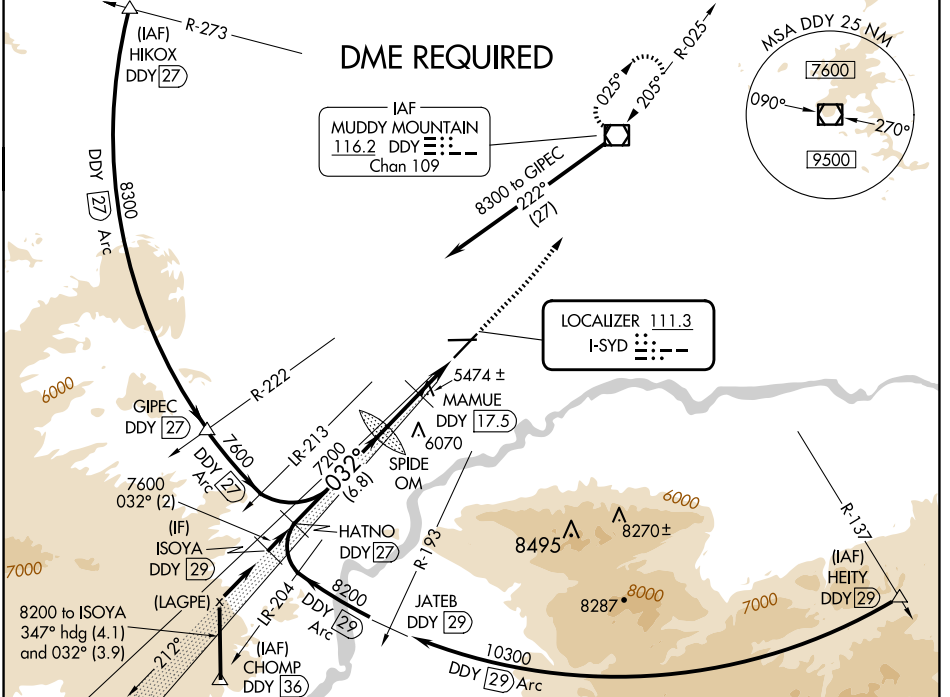
ILS or LOC RWY 3

CASPER/NATRONA COUNTY INTL (CPR)

⚠ DME from DDY VOR/DME. Simultaneous reception of I-SYD and DDY DME required. When local altimeter setting not received, use Douglas altimeter setting and increase DA to 5697 feet and all MDA's 180 feet, increase S-ILS visibility all Cats ¼ SM and S-LOC visibility Cat B, C, D and Circling Cats B, C, D visibility ½ SM, increase MAMUE FIX MINIMUM Circling visibility Cat C ½ SM and Cat D ¼ SM. For inoperative MALSR when using Douglas altimeter setting increase S-ILS visibility all Cats to 1 ½ mile. MAMUE FIX MINIMUMS: For inoperative MALSR, increase S-LOC visibility Cats C, and D to 1 ½ mile. #RVR 1800 authorized with use of FD or AP or HUD to DA.

MALSR MISSED APPROACH: Climb to 7500 then left turn direct DDY VOR/DME and hold.

ATIS 126.15	CASPER APP CON * 120.65 354.1	CASPER TOWER * 118.3 (CTAF) 257.8	GND CON 121.9	CLNC DEL 121.9 257.8	UNICOM 122.95
-----------------------	---	---	-------------------------	--------------------------------	-------------------------



ISOYA DDD [29]	*6400 when using Douglas altimeter setting.	HATNO DDD [27]	SPIDE OM	MAMUE DDD [17.5]	7500	DDY
8200	032°	7600	7183	DDY [14.7]	*LOC only	
GS 3.00° TCH 50		7200	*6220			
		2 NM	6.8 NM	2.9 NM	2.7 NM	

ELEV 5344	TDZE 5328
REIL Rwy 21	
HIRL Rws 3-21 and 8-26	
FAF to MAP 5.6 NM	
Knots	60 90 120 150 180
Min:Sec	5:36 3:44 2:48 2:14 1:52

NW-1, 23 JAN 2025 to 20 FEB 2025

NW-1, 23 JAN 2025 to 20 FEB 2025