

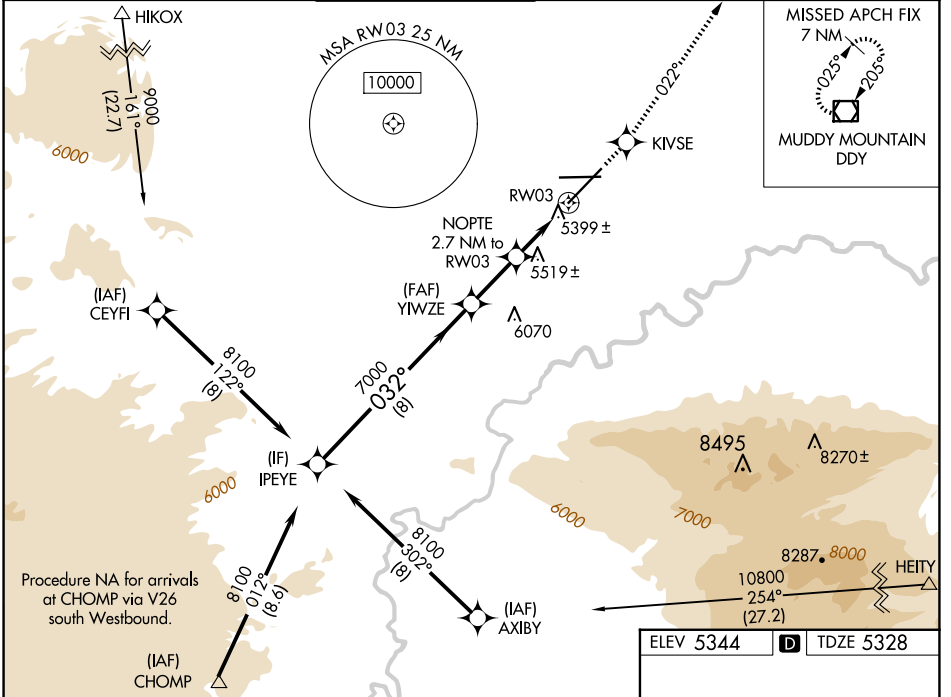
WAAS CH <b>73006</b> <b>W03A</b>	APP CRS <b>032°</b>	Rwy Idg <b>10165</b> TDZE <b>5328</b> Apt Elev <b>5344</b>
--	------------------------	--

# RNAV (GPS) RWY 3

CASPER/NATRONA COUNTY INTL (CPR)

<b>⚠</b> For inoperative MALSR, increase LPV all Cats visibility to 1 mile. <b>⚠</b> For uncompensated Baro-VNAV systems, LNAV/VNAV NA below -25°C (-13°F) or above 38°C (100°F). DME/DME RNP-0.3 NA.	MALSR 	MISSED APPROACH: Climb to 7500 direct KIVSE and via track 022° to DDY VOR/DME and hold.
---	-----------	---

ATIS <b>126.15</b>	CASPER APP CON * <b>120.65 354.1</b>	CASPER TOWER * <b>118.3 (CTAF) 0 257.8</b>	GND CON <b>121.9</b>	CLNC DEL <b>121.9 257.8</b>	UNICOM <b>122.95</b>
-----------------------	---	---	-------------------------	--------------------------------	-------------------------



NW-1, 23 JAN 2025 to 20 FEB 2025

NW-1, 23 JAN 2025 to 20 FEB 2025

Procedure Turn NA	8100	032°	7000	NOPT 2.7 NM to RW03	*1.3 NM to RW03	RW03
GP 3.00°	*6240					
TCH 52	8 NM	2.3 NM	1.4 NM	1.3 NM		
CATEGORY	A	B	C	D		
LPV DA	5643/24		315 (300-½)			
LNAV/VNAV DA	5691/40		363 (400-¾)			
LNAV MDA	5780/24	452 (500-½)	5780/40	5780/50	452 (500-1)	
CIRCLING	5780-1	5800-1	5860-1½	6200-2¾	856 (900-2¾)	
	436 (500-1)	456 (500-1)	516 (600-1½)			

