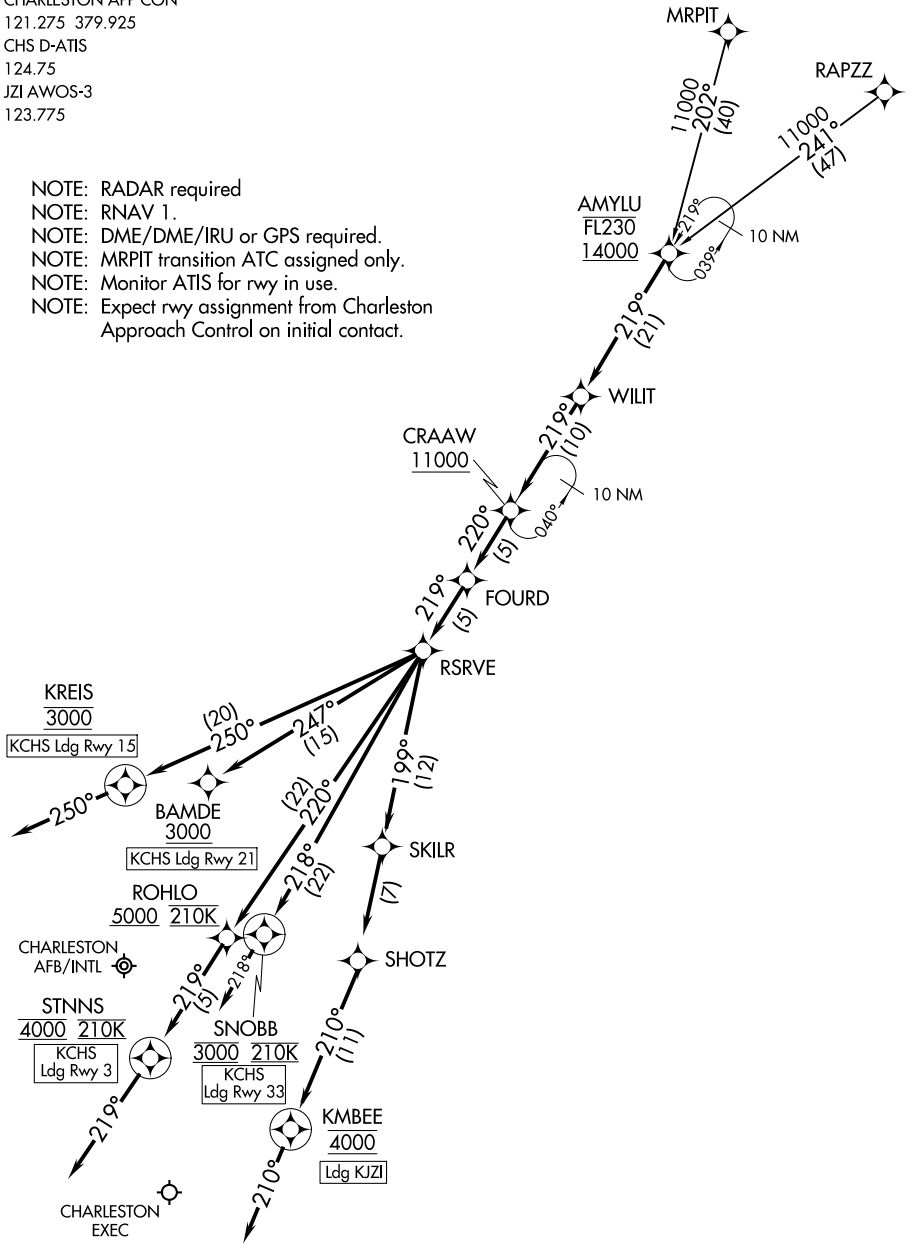


AMYLU THREE ARRIVAL (RNAV)

CHARLESTON, SOUTH CAROLINA

CHARLESTON APP CON
 121.275 379.925
 CHS D-ATIS
 124.75
 JZI AWOS-3
 123.775

- NOTE: RADAR required
- NOTE: RNAV 1.
- NOTE: DME/DME/IRU or GPS required.
- NOTE: MRPIT transition ATC assigned only.
- NOTE: Monitor ATIS for rwy in use.
- NOTE: Expect rwy assignment from Charleston Approach Control on initial contact.



(NARRATIVE ON FOLLOWING PAGE)

NOTE: Chart not to scale.

AMYLU THREE ARRIVAL (RNAV)

CHARLESTON, SOUTH CAROLINA

SE-2, 23 JAN 2025 to 20 FEB 2025

SE-2, 23 JAN 2025 to 20 FEB 2025

ARRIVAL ROUTE DESCRIPTION

MRPIT TRANSITION (MRPIT.AMYLU3):

RAPZZ TRANSITION (RAPZZ.AMYLU3):

KCHS: From AMYLU on track 219° to WILIT, then on track 219° to cross CRAAW at or above 11000, then on track 220° to FOURD, then on track 219° to RSRVE.

LANDING KCHS RUNWAY 3:

From RSRVE on track 220° to cross ROHLO at or above 5000 and at 210K, then on track 219° to cross STNNS at 4000 and at 210K, then on heading 219° or as assigned by ATC. Expect RNP RWY 3 approach.

Non-RNP aircraft: Expect RADAR vectors to final approach course.

LANDING KCHS RUNWAY 15:

From RSRVE on track 250° to cross KREIS at 3000, then on heading 250° or as assigned by ATC. Expect RNP RWY 15 approach.

Non-RNP aircraft: Expect RADAR vectors to final approach course.

LANDING KCHS RUNWAY 21:

From RSRVE on track 247° to cross BAMDE at or above 3000.

Expect RNAV RWY 21 approach.

LANDING KCHS RUNWAY 33:

From RSRVE on track 218° to cross SNOBB at 3000 and at 210K, then on heading 218° or as assigned by ATC. Expect RNP RWY 33 approach.

Non-RNP aircraft: Expect RADAR vectors to final approach course.

LANDING KJZI:

From RSRVE on track 199° to SKILR, then on track 199° to SHOTZ, then on track 210° to cross KMBEE at 4000, then on heading 210° or as assigned by ATC.

Expect RADAR vectors to final approach course.

SE-2, 23 JAN 2025 to 20 FEB 2025

SE-2, 23 JAN 2025 to 20 FEB 2025