

# AIRPORT DIAGRAM

AL-78 (FAA)

CHARLOTTE/DOUGLAS INTL (CLT)  
CHARLOTTE, NORTH CAROLINA

D-ATIS ARR 121.15  
 DEP 132.1  
 CHARLOTTE TOWER  
 118.1 (RWY 18L-36R)  
 126.4 (RWY 18C-36C)  
 133.35 (RWY 18R-36L)  
 257.8  
 GND CON  
 121.8 (WEST)  
 121.9 (EAST)  
 348.6  
 CLNC DEL  
 127.15 348.6  
 CPDLC  
 PDC

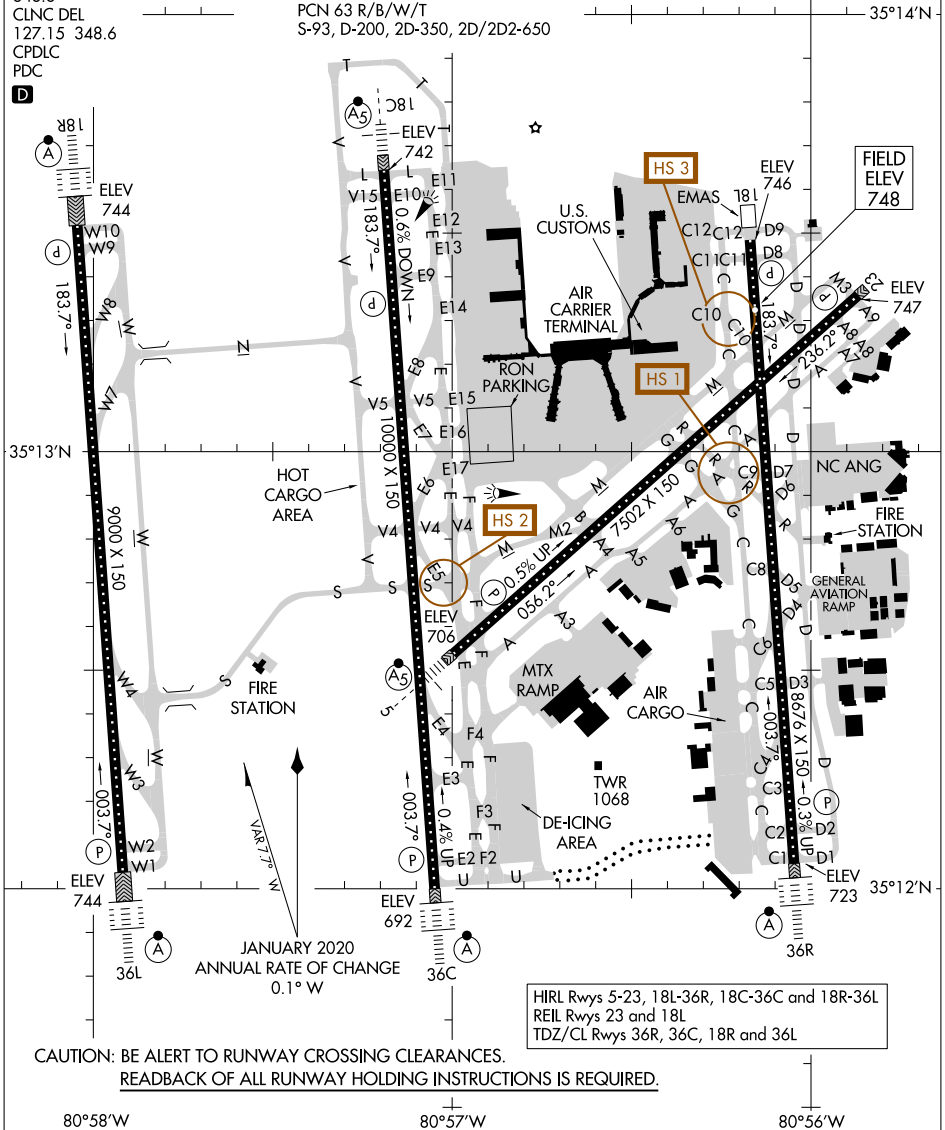
RWY 05-23  
 PCN 73 R/B/W/T  
 S-93, D-170, 2D-350, 2D/2D2-650  
 RWY 18C-36C  
 PCN 82 R/B/W/T  
 S-93, D-200, 2D-350, 2D/2D2-650  
 RWY 18L-36R  
 PCN 68 R/B/W/T  
 S-93, D-200, 2D-350, 2D/2D2-650  
 RWY 18R-36L  
 PCN 63 R/B/W/T  
 S-93, D-200, 2D-350, 2D/2D2-650

ASDE-X in use. Operate transponders with altitude reporting mode and ADS-B (if equipped) enabled on all airport surfaces.

Runway Status Lights in operation.

SE-2, 23 JAN 2025 to 20 FEB 2025

SE-2, 23 JAN 2025 to 20 FEB 2025



HIRL Rwy 5-23, 18L-36R, 18C-36C and 18R-36L  
 REIL Rwy 23 and 18L  
 TDZ/CL Rwy 36R, 36C, 18R and 36L

CAUTION: BE ALERT TO RUNWAY CROSSING CLEARANCES.  
 READBACK OF ALL RUNWAY HOLDING INSTRUCTIONS IS REQUIRED.