

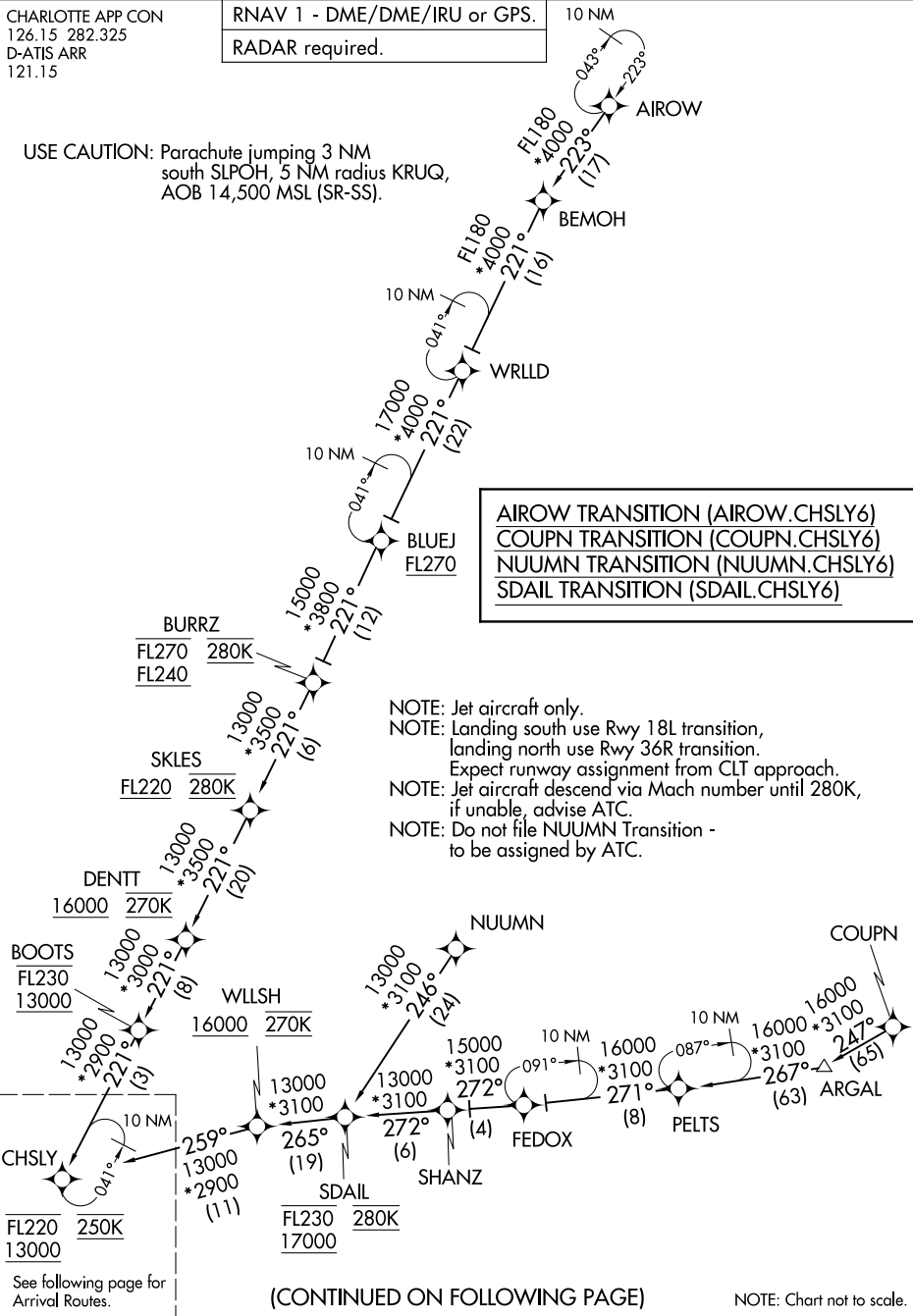
CHSLY SIX ARRIVAL (RNAV) Transition Routes

CHARLOTTE APP CON
126.15 282.325
D-ATIS ARR
121.15

RNAV 1 - DME/DME/IRU or GPS.
RADAR required.

10 NM

USE CAUTION: Parachute jumping 3 NM south SLPOH, 5 NM radius KRUQ, AOB 14,500 MSL (SR-SS).



AIROW TRANSITION (AIROW.CHSLY6)
 COUPN TRANSITION (COUPN.CHSLY6)
 NUUMN TRANSITION (NUUMN.CHSLY6)
 SDAIL TRANSITION (SDAIL.CHSLY6)

- NOTE: Jet aircraft only.
- NOTE: Landing south use Rwy 18L transition, landing north use Rwy 36R transition. Expect runway assignment from CLT approach.
- NOTE: Jet aircraft descend via Mach number until 280K, if unable, advise ATC.
- NOTE: Do not file NUUMN Transition - to be assigned by ATC.

SE-2, 23 JAN 2025 to 20 FEB 2025

SE-2, 23 JAN 2025 to 20 FEB 2025

See following page for Arrival Routes.

(CONTINUED ON FOLLOWING PAGE)

NOTE: Chart not to scale.

(CHSLY.CHSLY6) 24137

AL-78 (FAA)

CHARLOTTE/DOUGLAS INTL (CLT)
CHARLOTTE, NORTH CAROLINA

CHSLY SIX ARRIVAL (RNAV)

Arrival Routes

CHARLOTTE APP CON
126.15 282.325
D-ATIS ARR
121.15

RNAV 1 - DME/DME/IRU or GPS.

RADAR required.

CHSLY
FL220 250K
13000

KRISS
12000
11000

SLPOH
FL210
11000

MID-CAROLINA RGNL

HEELZ
6000 210K

Ldg Rwys 18L/C/R

NODEW
9000 230K
8000

JAMGO
16000
10000

WHIZE
12000 250K
10000

CAATT
10000 210K

- NOTE: Jet aircraft only.
- NOTE: Landing south use Rwy 18L transition, landing north use Rwy 36R transition. Expect runway assignment from CLT approach.
- NOTE: Jet aircraft descend via Mach number until 280K, if unable, advise ATC.
- NOTE: Do not file NUUMN Transition - to be assigned by ATC.

USE CAUTION: Parachute jumping 3 NM south SLPOH, 5 NM radius KRUQ, AOB 14,500 MSL (SR-SS).

EPAYE
Ldg Rwys 36L/C/R

(CONTINUED ON FOLLOWING PAGE)

NOTE: Chart not to scale.

CHSLY SIX ARRIVAL (RNAV)

Arrival Routes

CHARLOTTE, NORTH CAROLINA
CHARLOTTE/DOUGLAS INTL (CLT)

(CHSLY.CHSLY6) 16MAY24

SE-2, 23 JAN 2025 to 20 FEB 2025

SE-2, 23 JAN 2025 to 20 FEB 2025

CHSLY SIX ARRIVAL (RNAV)

ARRIVAL ROUTE DESCRIPTION

LANDING RUNWAYS 18L/C/R: From CHSLY on track 225° to cross KRISS between 11000 and 12000, then on track 204° to cross NODEW between 8000 and 9000 and at 230K, then on track 276° to cross HEELZ at 6000 and at 210K, then on track 270°. Expect RADAR vectors to final approach course.

LANDING RUNWAYS 36L/C/R: From CHSLY on track 220° to cross SLPOH between 11000 and FL210, then on track 219° to cross JAMGO between 10000 and 16000, then on track 218° to cross WHIZE between 10000 and 12000 and at 250K, then on track 218° to cross CAATT at 10000 and at 210K, then on track 183° to EPAYE, then on track 183°. Expect RADAR vectors to final approach course.

SE-2, 23 JAN 2025 to 20 FEB 2025

SE-2, 23 JAN 2025 to 20 FEB 2025