

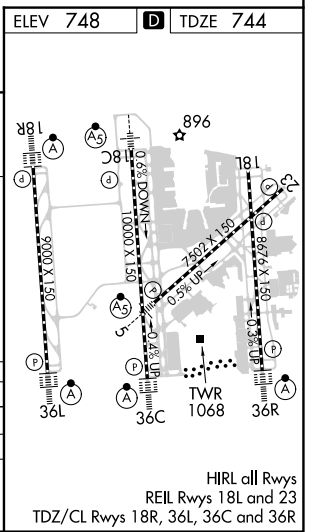
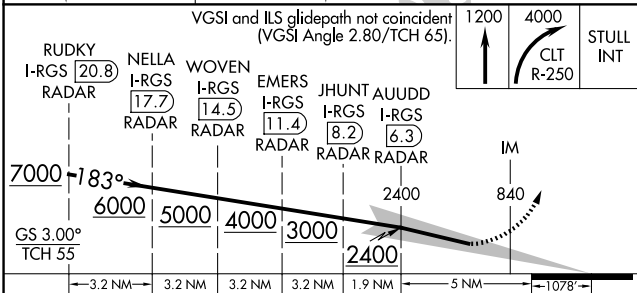
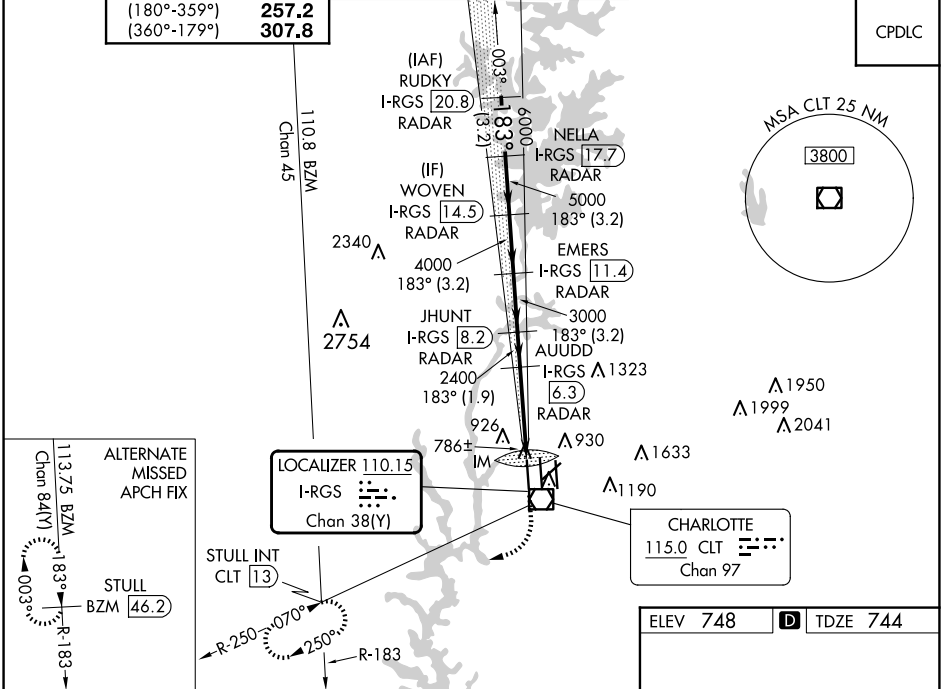
LOC/DME I-RGS 110.15 Chan 38(Y)	APP CRS 183°	Rwy Idg TDZE 744 Apt Elev 748	9000
--	------------------------	---	-------------

ILS RWY 18R (CAT II & III)

CHARLOTTE/DOUGLAS INTL (CLT)

RADAR required for procedure entry. DME or RADAR required.		ALSIF-2 	MISSED APPROACH: Climb to 1200 then climbing right turn to 4000 on CLT VOR/DME R-250 to STULL INT/CLT 13 DME and hold, continue climb-in-hold to 4000.
Simultaneous approach authorized.			

D-ATIS	CHARLOTTE APP CON	CHARLOTTE TOWER	GND CON	CLNC DEL
ARR 121.15 DEP 132.1	(001°-119°) 128.32 (120°-295°) 120.05 (296°-360°) 134.75 (180°-359°) 257.2 (360°-179°) 307.8	(Rwys 18L-36R) 118.1 257.8 (Rwy 18C-36C) 126.4 257.8 (Rwy 18R-36L) 133.35 257.8	121.8 348.6 (WEST) 121.9 348.6 (EAST)	127.15 348.6



CATEGORY	A	B	C	D
S-ILS 18R	CAT II RA 106/12 100 DA 844			
S-ILS 18R	CAT III RVR 06			

CATEGORY II & III ILS SPECIAL AIRCREW & AIRCRAFT CERTIFICATION REQUIRED

SE-2, 23 JAN 2025 to 20 FEB 2025

SE-2, 23 JAN 2025 to 20 FEB 2025