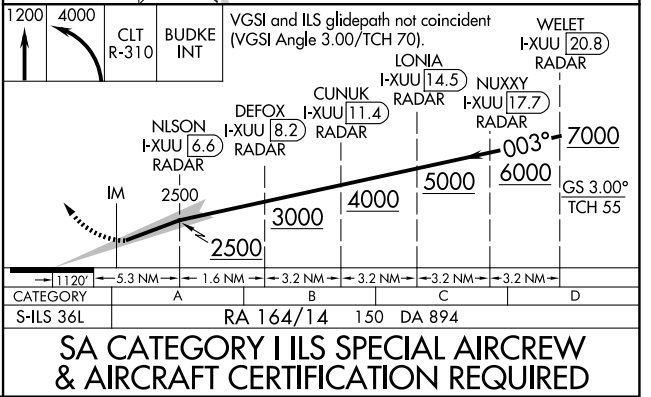
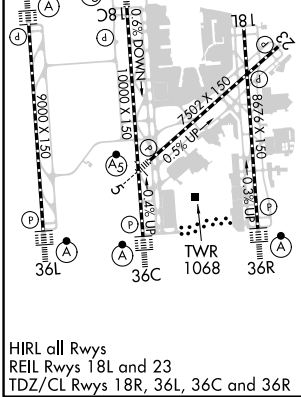
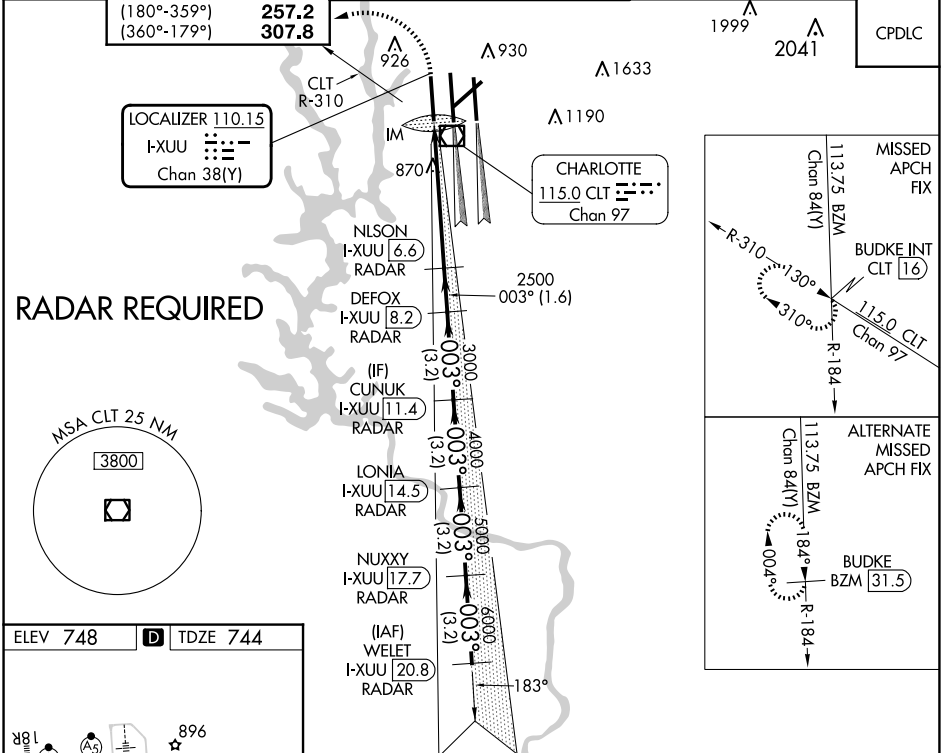


LOC/DME I-XUU 110.15 Chan 38 (Y)	APP CRS 003°	Rwy Idg TDZE 744 Apt Elev 748	9000
--	------------------------	---	-------------

ILS RWY 36L (SA CAT I)

CHARLOTTE/DOUGLAS INTL (CLT)

⚠ Simultaneous approach authorized. ⚠ DME or RADAR required. Requires specific OPSPEC, MSPEC, or LOA approval and use of HUD to DH.	ALSF-2 	MISSED APPROACH: Climb to 1200 then climbing left turn to 4000 and on CLT VOR/DME R-310 to BUDKE INT/CLT 16 DME and hold.		
		D-ATIS	CHARLOTTE APP CON	CHARLOTTE TOWER
ARR 121.15	(001°-119°) 128.32	(Rwys 18L-36R) 118.1 257.8	121.8 348.6 (WEST)	127.15
DEP 132.1	(120°-295°) 120.05	(Rwy 18C-36C) 126.4 257.8	121.9 348.6 (EAST)	348.6
	(296°-360°) 134.75	(Rwy 18R-36L) 133.35 257.8		
	(180°-359°) 257.2			
	(360°-179°) 307.8			



SA CATEGORY I ILS SPECIAL AIRCREW & AIRCRAFT CERTIFICATION REQUIRED

SE-2, 23 JAN 2025 to 20 FEB 2025

SE-2, 23 JAN 2025 to 20 FEB 2025