

LOC/DME I-PEP 111.3 Chan 50	APP CRS 183°	Rwy Idg 10000 TDZE 742 Apt Elev 748
--	------------------------	--

ILS or LOC RWY 18C

CHARLOTTE/DOUGLAS INTL (CLT)

RADAR required for procedure entry. DME or RADAR required

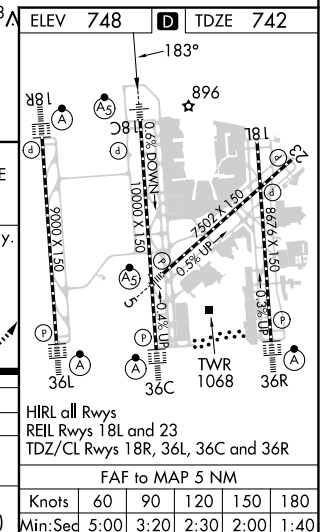
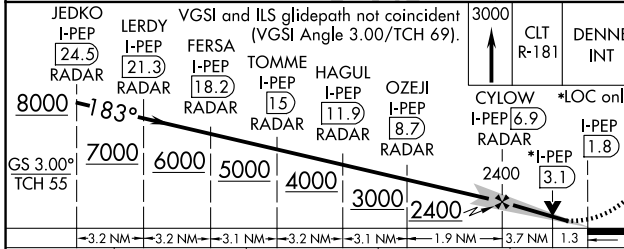
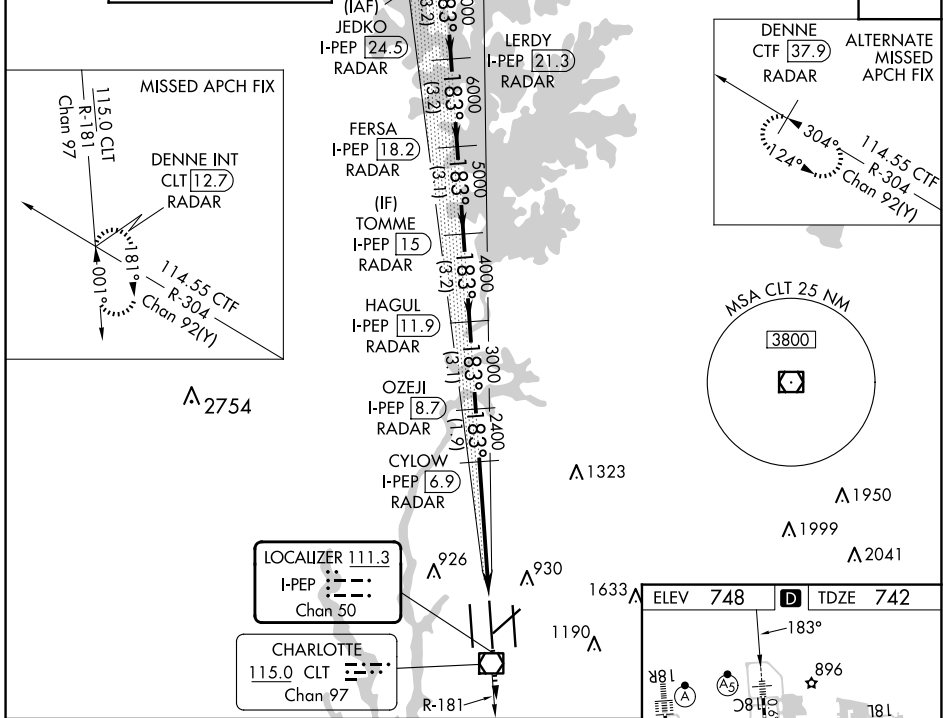
⚠ Circling NA at night. Simultaneous approach authorized. For inop ALS, increase S-LOC 18C Cat C/D visibility to 1/8 SM.

⚠ ** RVR 1800 authorized with the use of FD or AP or HUD to DA.



MISSED APPROACH: Climb to 3000 on CLT VOR/DME R-181 to DENNE INT/CLT 12.7 DME/RADAR and hold.

D-ATIS ARR 121.15 DEP 132.1	CHARLOTTE APP CON (001°-119°) 128.32 (120°-295°) 120.05 (296°-360°) 134.75 (180°-359°) 257.2 (360°-179°) 307.8	CHARLOTTE TOWER (Rwys 18L-36R) 118.1 257.8 (Rwy 18C-36C) 126.4 257.8 (Rwy 18R-36L) 133.35 257.8	GND CON 121.8 348.6 (WEST) 121.9 348.6 (EAST)	CLNC DEL 127.15 348.6
---	--	---	---	---



CATEGORY	A	B	C	D
S-ILS 18C **	942/24 200 (200-1/2)			
S-LOC 18C	1220/24 478 (500-1/2)	1220/50 478 (500-1)		
CIRCLING	1380-1 632 (700-1)	1500-2 1/4 752 (800-2 1/4)	1500-2 1/2 752 (800-2 1/2)	

HIRL all Rwys					
REIL Rwys 18L and 23					
TDZ/CL Rwys 18R, 36L, 36C and 36R					
FAF to MAP 5 NM					
Knots	60	90	120	150	180
Min:Sec	5:00	3:20	2:30	2:00	1:40