

LOC/DME I-VKQ 110.35 Chan 40(Y)	APP CRS 183°	Rwy Idg TDZE Apt Elev 8676 748 748
--	------------------------	--

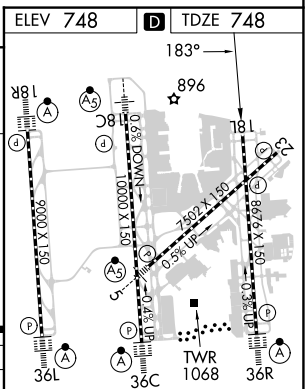
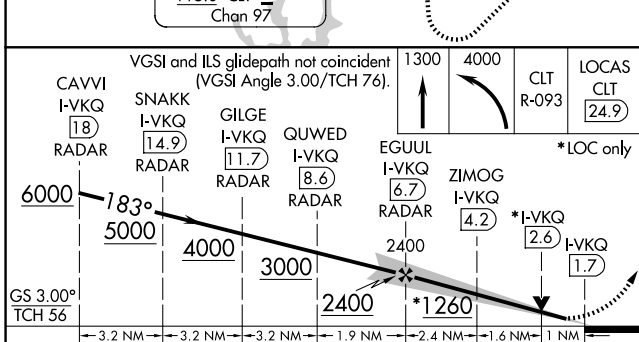
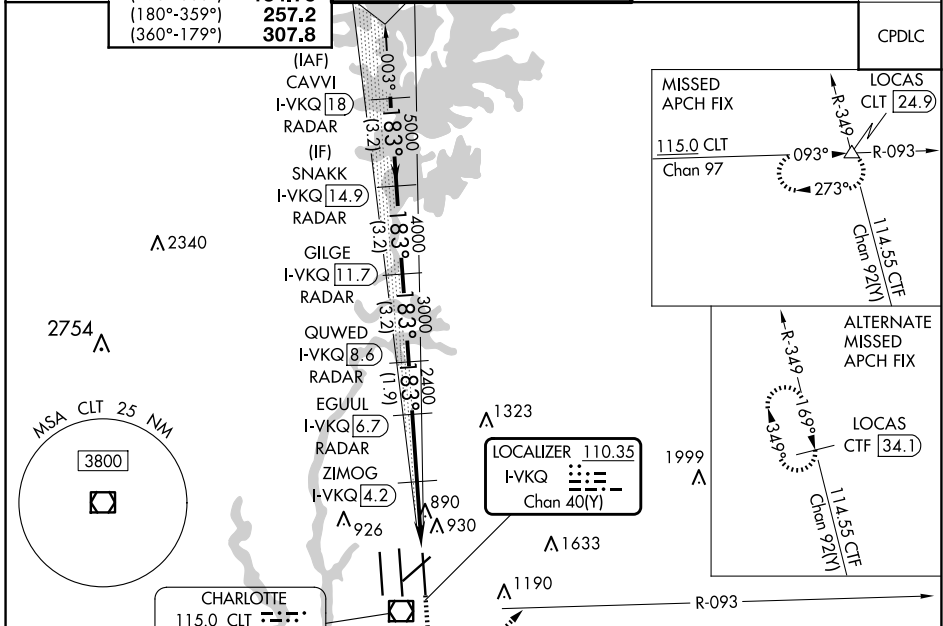
ILS or LOC RWY 18L

CHARLOTTE/DOUGLAS INTL (CLT)

RADAR required for procedure entry. DME or RADAR required. MISSED APPROACH: Climb to 1300 then climbing left turn to 4000 on CLT VOR/DME R-093 to LOCAS INT/CLT 24.9 DME and hold.

Simultaneous approach authorized.
Rwy 18L helicopter visibility reduction below RVR 4000 NA.

D-ATIS	CHARLOTTE APP CON	CHARLOTTE TOWER	GND CON	CLNC DEL
ARR 121.15	128.32 (001°-119°)	(Rwys 18L-36R) 118.1 257.8	121.8 348.6 (WEST)	127.15
DEP 132.1	120.05 (120°-295°)	(Rwy 18C-36C) 126.4 257.8	121.9 348.6 (EAST)	348.6
	134.75 (296°-360°)	(Rwy 18R-36L) 133.35 257.8		
	257.2 (180°-359°)			
	307.8 (360°-179°)			



CATEGORY	A	B	C	D
S-ILS 18L	1002/40 254 (300-¾)			
S-LOC 18L	1260/55	512 (600-1)	1260-1⅓	512 (600-1⅓)
ZIMOG FIX MINIMUMS (DME REQUIRED)				
S-LOC 18L	1140/55	392 (400-1)	1140/60	392 (400-1¼)

FAF to MAP 5 NM					
Knots	60	90	120	150	180
Min:Sec	5:00	3:20	2:30	2:00	1:40

SE-2, 23 JAN 2025 to 20 FEB 2025

SE-2, 23 JAN 2025 to 20 FEB 2025