

LOC/DME I-RGS 110.15 Chan 38(Y)	APP CRS 183°	Rwy Idg TDZE 744 Apt Elev 748	9000
---	------------------------	---	-------------

ILS or LOC RWY 18R

CHARLOTTE/DOUGLAS INTL (CLT)

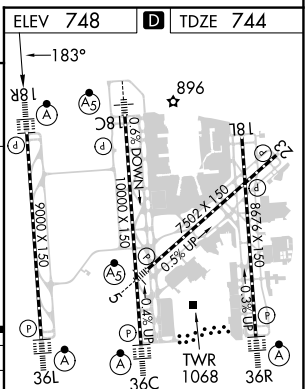
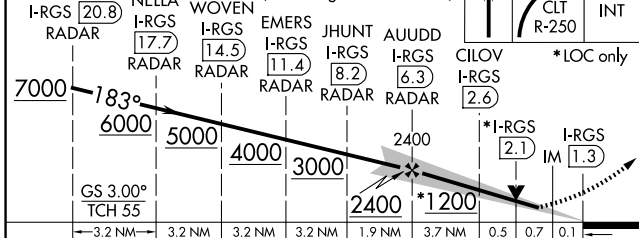
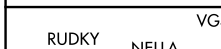
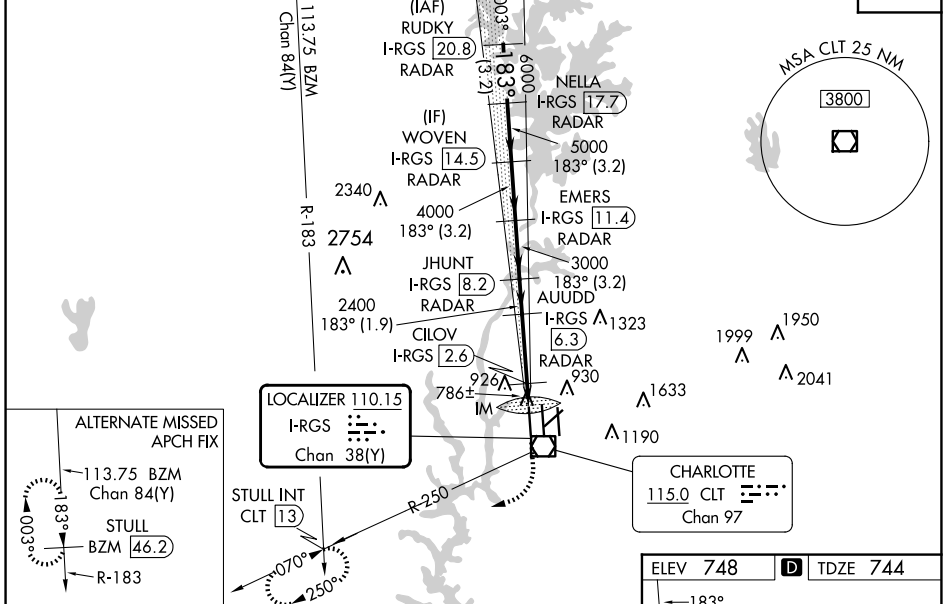
RADAR required for procedure entry. DME or RADAR required.

ALSF-2

MISSED APPROACH: Climb to 1200 then climbing right turn to 4000 on CLT VOR/DME R-250 to STULL INT/CLT 13 DME and hold, continue climb-in-hold to 4000.

Simultaneous approach authorized. CILOV minimums: For inop ALS, increase S-LOC 18R all Cats visibility to RVR 4500.

D-ATIS ARR 121.15 DEP 132.1	CHARLOTTE APP CON (001°-119°) 128.32 (120°-295°) 120.05 (296°-360°) 134.75 (180°-359°) 257.2 (360°-179°) 307.8	CHARLOTTE TOWER (Rwys 18L-36R) 118.1 257.8 (Rwy 18C-36C) 126.4 257.8 (Rwy 18R-36L) 133.35 257.8	GND CON 121.8 348.6 (WEST) 121.9 348.6 (EAST)	CLNC DEL 127.15 348.6
---	--	---	---	---



CATEGORY	A	B	C	D
S-ILS 18R	944/18 200 (200-½)			
S-LOC 18R	1200/24 456 (500-½)	1200/45 456 (500-¾)		
CILOV FIX MINIMUMS (DME REQUIRED)				
S-LOC 18R	1040/24 296 (300-½)			

HIRL all Rwys REIL Rwys 18L and 23 TDZ/CL Rwys 18R, 36L, 36C and 36R					
FAF to MAP 5 NM					
Knots	60	90	120	150	180
Min:Sec	5:00	3:20	2:30	2:00	1:40

SE-2, 23 JAN 2025 to 20 FEB 2025

SE-2, 23 JAN 2025 to 20 FEB 2025