

| | | | |
|--------------|-------------|----------|--------------|
| LOC I-DQG | APP CRS | Rwy Idg | 10000 |
| 111.7 | 003° | TDZE | 707 |
| | | Apt Elev | 748 |

ILS or LOC RWY 36C

CHARLOTTE/DOUGLAS INTL (CLT)

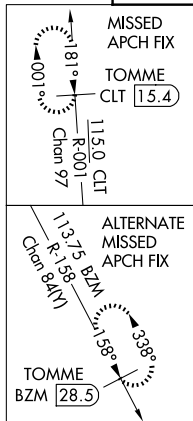
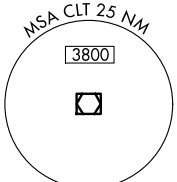
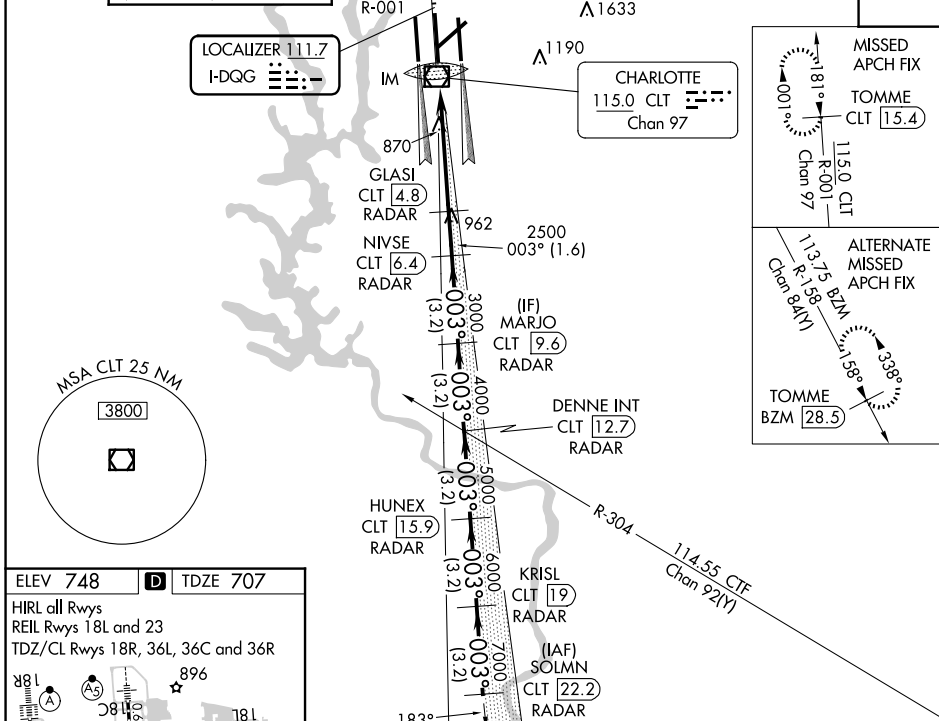
RADAR required for procedure entry. DME or RADAR required.

⚠ Circling NA at night. Simultaneous approach authorized. DQG ILS LLZ Rwy 36C unusable for rollout guidance.

ALSF-2
A

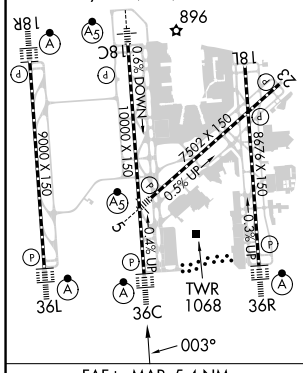
MISSED APPROACH: Climb to 3000 on CLT VOR/DME R-001 to TOMME/CLT 15.4 DME and hold.

| | | | | |
|-------------------|---------------------------|-----------------------------------|---------------------------|---------------|
| D-ATIS | CHARLOTTE APP CON | CHARLOTTE TOWER | GND CON | CLNC DEL |
| ARR 121.15 | (001°-119°) 128.32 | (Rwys 18L-36R) 118.1 257.8 | 121.8 348.6 (WEST) | 127.15 |
| DEP 132.1 | (120°-295°) 120.05 | (Rwy 18C-36C) 126.4 257.8 | 121.9 348.6 (EAST) | 348.6 |
| | (296°-360°) 134.75 | (Rwy 18R-36L) 133.35 257.8 | | |
| | (180°-359°) 257.2 | | | |
| | (360°-179°) 307.8 | | | |



ELEV 748 **D** TDZE 707

HIRL all Rwys
REIL Rwys 18L and 23
TDZ/CL Rwys 18R, 36L, 36C and 36R



| | | | | | | |
|---------------|----------------|---|--------------------|----------------|--------------|----------------|
| CLT R-001 | TOMME CLT 15.4 | VGSi and ILS glidepath not coincident (VGSi Angle 3.00/TCH 72). | | | | SOLMN CLT 22.2 |
| GLASI CLT 4.8 | NIVSE CLT 6.4 | MARJO CLT 9.6 | DENNE INT CLT 12.7 | HUNEX CLT 15.9 | KRISL CLT 19 | |
| IM 2500 | 3000 | 4000 | 5000 | 6000 | 7000 | |
| 0.2 NM | 0.2 NM | 1.6 NM | 3.2 NM | 3.2 NM | 3.2 NM | |
| GS 3.00° | TCH 57 | | | | | |

FAF to MAP 5.4 NM

| | | | | | |
|---------|------|------|------|------|------|
| Knots | 60 | 90 | 120 | 150 | 180 |
| Min:Sec | 5:24 | 3:36 | 2:42 | 2:10 | 1:48 |

| | | | | |
|-------------------|-----------------------|----------------------------|----------------------------|---|
| CATEGORY | A | B | C | D |
| S-ILS 36C | 907/18 200 (200-1/2) | | | |
| S-LOC 36C | 1120/24 413 (400-1/2) | | | |
| C CIRCLING | 1380-1 632 (700-1) | 1500-2 1/4 752 (800-2 1/4) | 1500-2 1/2 752 (800-2 1/2) | |

SE-2, 23 JAN 2025 to 20 FEB 2025

SE-2, 23 JAN 2025 to 20 FEB 2025