

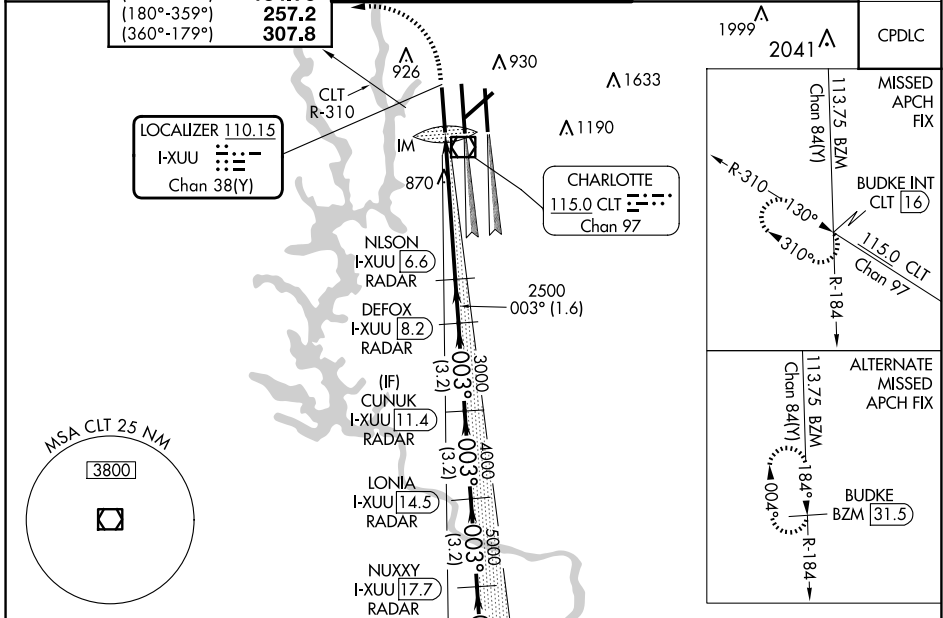
LOC/DME I-XUU <b>110.15</b> Chan 38(Y)	APP CRS <b>003°</b>	Rwy Idg TDZE <b>9000 744</b> Apt Elev <b>748</b>
--	------------------------	---

# ILS or LOC RWY 36L

CHARLOTTE/DOUGLAS INTL (CLT)

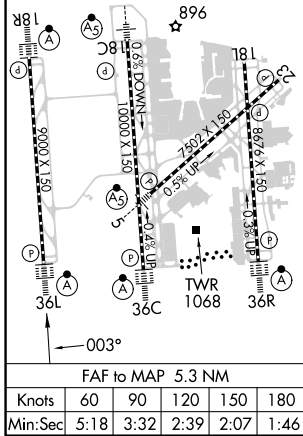
<p><b>⚠</b> Circling NA at night. Simultaneous approach authorized.</p> <p><b>⚠</b> DME or RADAR required.</p>	<p>ALSF-2</p>	<p>MISSED APPROACH: Climb to 1200 then climbing left turn to 4000 on CLT VOR/DME R-310 to BUDKE/CLT 16 DME and hold.</p>
--	---------------	--

D-ATIS ARR <b>121.15</b> DEP <b>132.1</b>	CHARLOTTE APP CON (001°-119°) <b>128.32</b> (120°-295°) <b>120.05</b> (296°-360°) <b>134.75</b> (180°-359°) <b>257.2</b> (360°-179°) <b>307.8</b>	CHARLOTTE TOWER (Rwys 18L-36R) <b>118.1 257.8</b> (Rwy 18C-36C) <b>126.4 257.8</b> (Rwy 18R-36L) <b>133.35 257.8</b>	GND CON <b>121.8 348.6</b> (WEST) <b>121.9 348.6</b> (EAST)	CLNC DEL <b>127.15 348.6</b>
---	--	---	---	---------------------------------



ELEV 748	<b>D</b>	TDZE 744
----------	----------	----------

HIRL all Rws  
REIL Rws 18L and 23  
TDZ/CL Rws 18R, 36L, 36C and 36R



## RADAR REQUIRED

1200	4000	CLT R-310	BUDKE INT	VGSI and ILS glidepath not coincident (VGSI Angle 3.00/TCH 70).	WELET I-XUU [20.8] RADAR	
*LOC only.						
I-XUU [1.3]	*I-XUU [2.5]	NLSN I-XUU [6.6] RADAR	DEFOX I-XUU [8.2] RADAR	CUNUK I-XUU [11.4] RADAR	LONIA I-XUU [14.5] RADAR	
					NUXXY I-XUU [17.7] RADAR	
					003° 7000	
					GS 3.00° TCH 55	
					0.1   1.1 NM   4.1 NM   1.6 NM   3.2 NM   3.2 NM   3.2 NM   3.2 NM	
CATEGORY	A		B		C	D
S-ILS 36L	944/18		200 (200-½)			
S-LOC 36L	1180/24	436 (500-½)	1180/40	436 (500-¾)		
<b>C</b> CIRCLING	1380-1	632 (700-1)	1500-2¼	752 (800-2¼)	1500-2½	752 (800-2½)

SE-2, 23 JAN 2025 to 20 FEB 2025

SE-2, 23 JAN 2025 to 20 FEB 2025