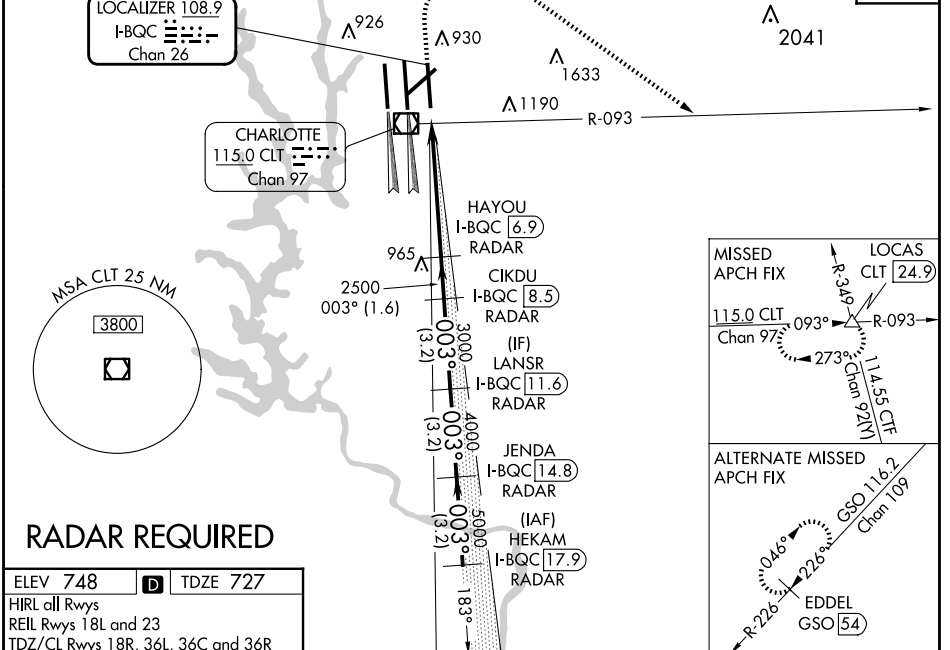


LOC/DME I-BQC 108.9 Chan 26	APP CRS 003°	Rwy Idg TDZE Apt Elev	8390 727 748
--	------------------------	-----------------------------	---

ILS or LOC RWY 36R

CHARLOTTE/DOUGLAS INTL (CLT)

⚠ Circling NA at night. Simultaneous approach authorized. DME or RADAR required.	ALSF-2 	MISSED APPROACH: Climb to 1320 then climbing right turn to 4000 on CLT VOR/DME R-093 to LOCAS INT/24.9 DME and hold.		
	D-ATIS ARR 121.15 DEP 132.1	CHARLOTTE APP CON (001°-119°) 128.32 (120°-295°) 120.05 (296°-360°) 134.75 (180°-359°) 257.2 (360°-179°) 307.8	CHARLOTTE TOWER (Rwys 18L-36R) 118.1 257.8 (Rwy 18C-36C) 126.4 257.8 (Rwy 18R-36L) 133.35 257.8	GND CON 121.8 348.6 (WEST) 121.9 348.6 (EAST)



RADAR REQUIRED

ELEV 748	D	TDZE 727
HIRL all Rwys REIL Rwys 18L and 23 TDZ/CL Rwys 18R, 36L, 36C and 36R		
FAF to MAP 5.4 NM		
Knots	60	90 120 150 180
Min:Sec	5:24	3:36 2:42 2:10 1:48

1320 4000 CLT R-093	LOCAS CLT [24.9]	VGSJ and ILS glidepath not coincident (VGSJ Angle 3.00/TCH 74).		
*LOC only.				
CATEGORY	A	B	C	D
S-ILS 36R	927/18 200 (200-½)			
S-LOC 36R	1120/24 393 (400-½)	1120/35 393 (400-¾)		
C CIRCLING	1380-1 632 (700-1)	1500-2¼ 752 (800-2¼)	1500-2½ 752 (800-2½)	

SE-2, 23 JAN 2025 to 20 FEB 2025

SE-2, 23 JAN 2025 to 20 FEB 2025