

JONZE FIVE ARRIVAL (RNAV)  
(JONZE.JONZE5) 16MAY24

CHARLOTTE/DOUGLAS INTL (CLT)  
CHARLOTTE, NORTH CAROLINA

CHARLOTTE APP CON  
135.6 377.15  
D-ATIS ARR  
121.15

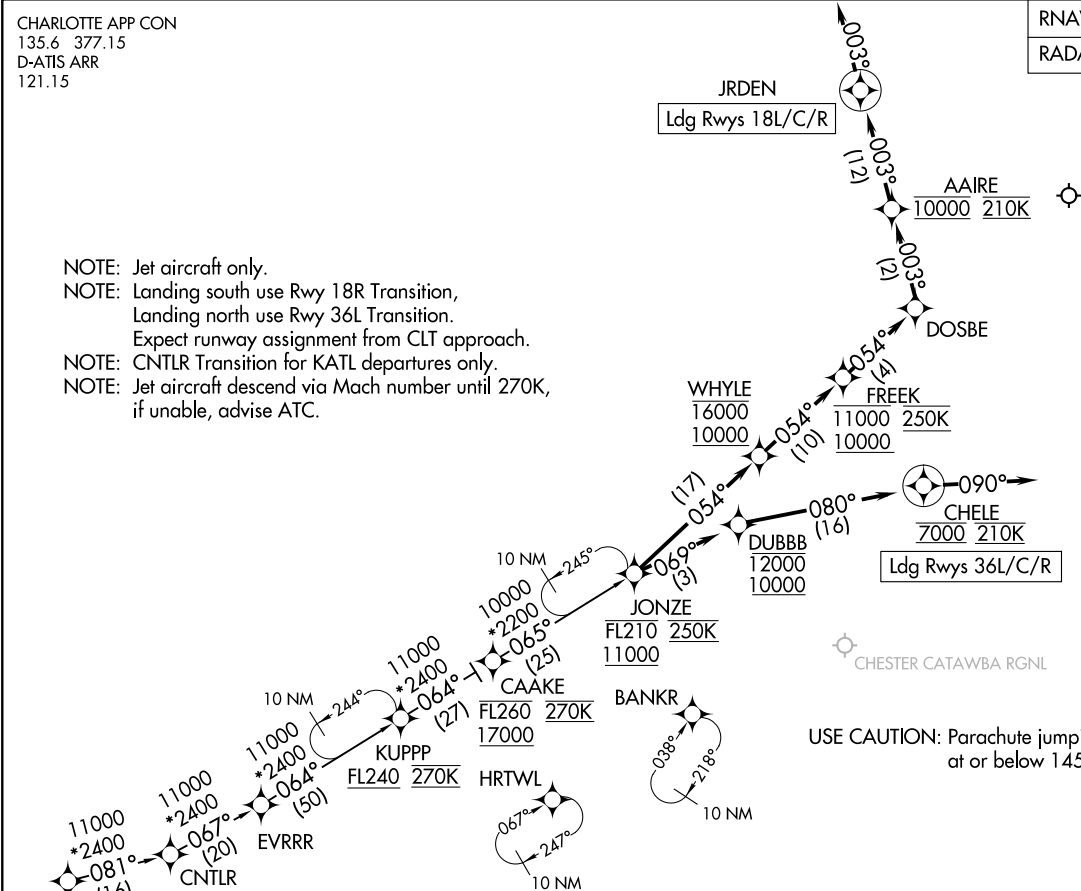
RNAV 1 - DME/DME/IRU or GPS.  
RADAR required.

(JONZE.JONZE5) 24137  
JONZE FIVE ARRIVAL (RNAV)

AL-78 (FAA)

CHARLOTTE/DOUGLAS INTL (CLT)  
CHARLOTTE, NORTH CAROLINA

- NOTE: Jet aircraft only.
- NOTE: Landing south use Rwy 18R Transition, Landing north use Rwy 36L Transition. Expect runway assignment from CLT approach.
- NOTE: CNTLR Transition for KATL departures only.
- NOTE: Jet aircraft descend via Mach number until 270K, if unable, advise ATC.



Ldg Rwys 36L/C/R

JRDEN  
Ldg Rwys 18L/C/R

USE CAUTION: Parachute jumping, 3 NM radius KDCM at or below 14500 MSL.

(CONTINUED ON FOLLOWING PAGE)

NOTE: Chart not to scale.

**JONZE FIVE ARRIVAL (RNAV)**

ARRIVAL ROUTE DESCRIPTION

BESTT TRANSITION (BESTT.JONZE5)

CNTRLR TRANSITION (CNTRLR.JONZE5)

LANDING RUNWAYS 18L/C/R: From JONZE on track 054° to cross WHYLE between 10000 and 16000, then on track 054° to cross FREEK between 10000 and 11000 and at 250K, then on track 054° to DOSBE, then on track 003° to cross AAIRE at 10000 and at 210K, then on track 003° to JRDEN, then on track 003°. Expect RADAR vectors to final approach course.

LANDING RUNWAYS 36L/C/R: From JONZE on track 069° to cross DUBBB between 10000 and 12000, then on track 080° to cross CHELE at 7000 and at 210K, then on track 090°. Expect RADAR vectors to final approach course.

SE-2, 23 JAN 2025 to 20 FEB 2025

SE-2, 23 JAN 2025 to 20 FEB 2025