

APP CRS	Rwy Idg	10000
003°	TDZE	707
	Apt Elev	748

RNAV (RNP) Z RWY 36C

CHARLOTTE/DOUGLAS INTL (CLT)

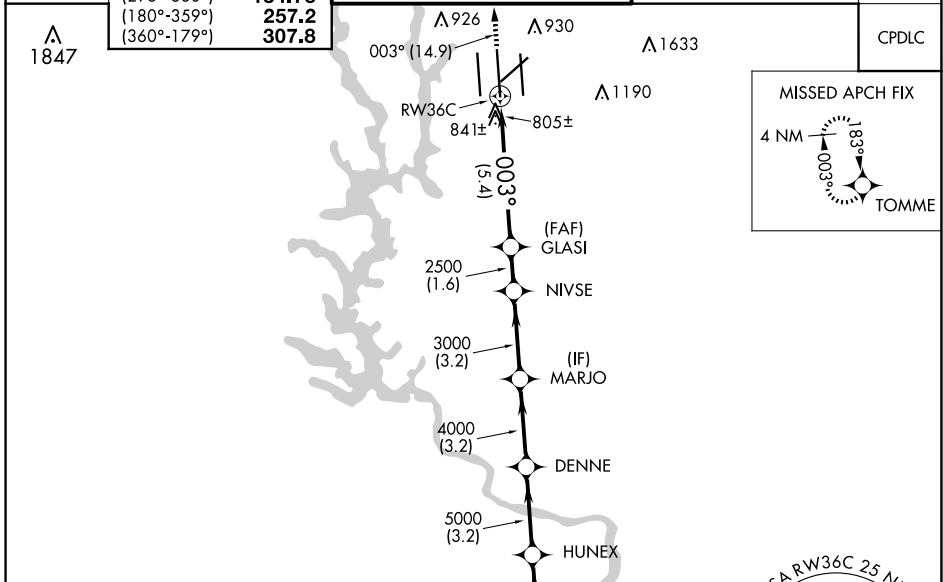
RNP AR APCH - GPS.

Simultaneous approach authorized. Use of FD or AP required during simultaneous operations. For uncompensated Baro-VNAV systems, procedure NA below -8°C or above 54°C. For inop ALS, increase RNP 0.30 visibility all Cats to 1½ SM.



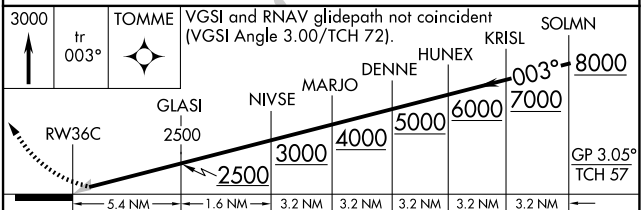
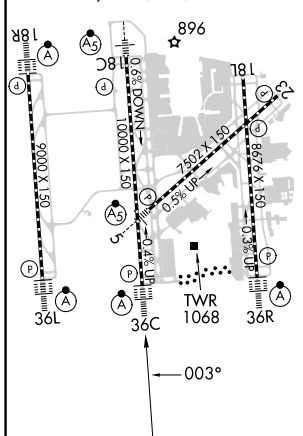
MISSED APPROACH: Climb to 3000 on track 003° to TOMME and hold.

D-ATIS	CHARLOTTE APP CON	CHARLOTTE TOWER	GND CON	CLNC DEL
ARR 121.15	(001°-119°) 128.32	(Rwys 18L-36R) 118.1 257.8	121.8 348.6 (WEST)	127.15
DEP 132.1	(120°-295°) 120.05	(Rwy 18C-36C) 126.4 257.8	121.9 348.6 (EAST)	348.6
	(296°-360°) 134.75	(Rwy 18R-36L) 133.35 257.8		
	(180°-359°) 257.2			
	(360°-179°) 307.8			



ELEV 748	D	TDZE 707
----------	----------	----------

HIRL all Rwys
REIL Rwys 18L and 23
TDZ/CL Rwys 18R, 36L, 36C and 36R



CATEGORY	A	B	C	D
RNP 0.11 DA	1134/40 427 (400-¾)			
RNP 0.30 DA	1180/50 473 (500-1)			

AUTHORIZATION REQUIRED

SE-2, 23 JAN 2025 to 20 FEB 2025

SE-2, 23 JAN 2025 to 20 FEB 2025