

WAAS CH 82415 W18D	APP CRS 183°	Rwy Idg TDZE 744 Apt Elev 748	9000
--	------------------------	---	-------------

RNAV (GPS) Y RWY 18R

CHARLOTTE/DOUGLAS INTL (CLT)

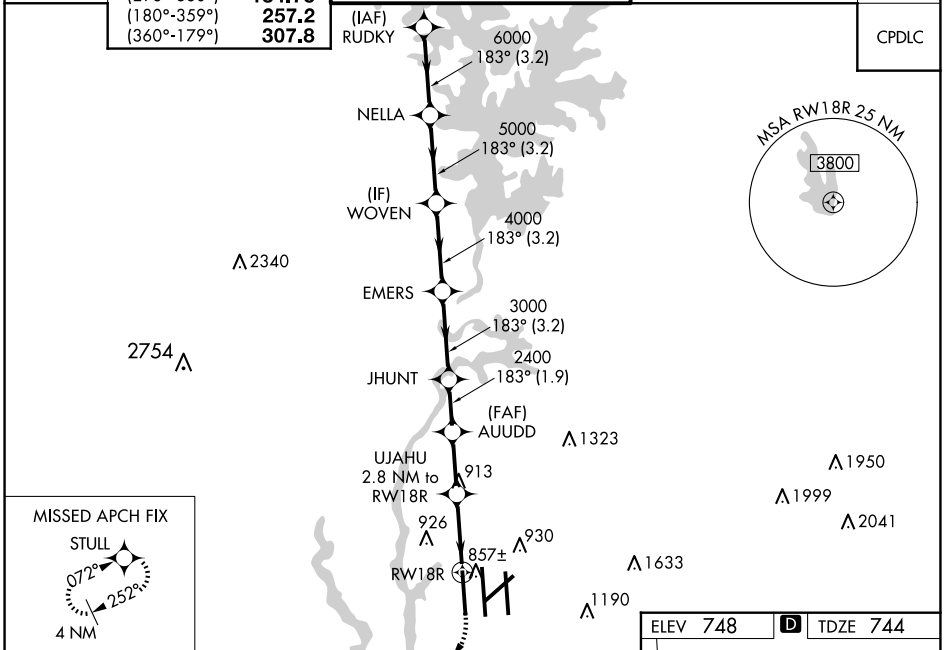
RNP APCH

⚠ Circling NA at night. Simultaneous approach authorized. LNAV procedure NA during simultaneous operations. Use of FD or AP providing Baro-VNAV track guidance required during simultaneous operations. For uncompensated Baro-VNAV systems, LNAV/VNAV NA below -11°C or above 54°C. For inop ALS, increase LNAV/VNAV all Cats visibility to RVR 4500. For inop ALS, increase LNAV Cat C/D visibility to RVR 5500.



MISSED APPROACH: Climb to 1200 then climbing right turn to 4000 direct STULL and hold, continue climb-in-hold to 4000.

D-ATIS ARR 121.15 DEP 132.1	CHARLOTTE APP CON (001°-119°) 128.32 (120°-295°) 120.05 (296°-360°) 134.75 (180°-359°) 257.2 (360°-179°) 307.8	CHARLOTTE TOWER (Rwys 18L-36R) 118.1 257.8 (Rwy 18C-36C) 126.4 257.8 (Rwy 18R-36L) 133.35 257.8	GND CON 121.8 348.6 (WEST) 121.9 348.6 (EAST)	CLNC DEL 127.15 348.6
---	--	---	---	---



RUDKY	NELLA	WOVEN	EMERS	JHUNT	AUUDD	UJAHU	RWY 18R
7000	6000	5000	4000	3000	2400	2400	748
3.2 NM	3.2 NM	3.2 NM	3.2 NM	1.9 NM	2.2 NM	1.8 NM	1 NM

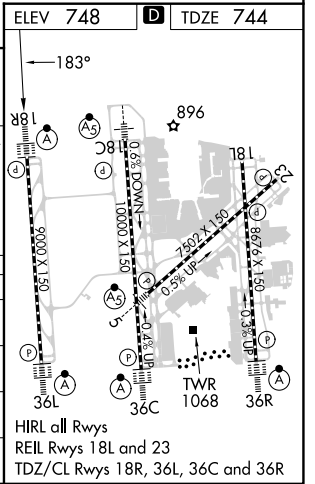
GP 3.00° TCH 55

VGSi and RNAV glidepath not coincident (VGSi Angle 2.80/TCH 65).

1200 4000 STULL

*LNAV only.

*1 NM to RWY 18R



CATEGORY	A	B	C	D
LPV DA	944/18		200 (200-½)	
LNAV/VNAV DA	1018/24		274 (300-½)	
LNAV MDA	1120/24	376 (400-½)	1120/40	376 (400-¾)
C CIRCLING	1380-1	632 (700-1)	1500-2¼ 752 (800-2¼)	1500-2½ 752 (800-2½)

SE-2, 23 JAN 2025 to 20 FEB 2025

SE-2, 23 JAN 2025 to 20 FEB 2025