

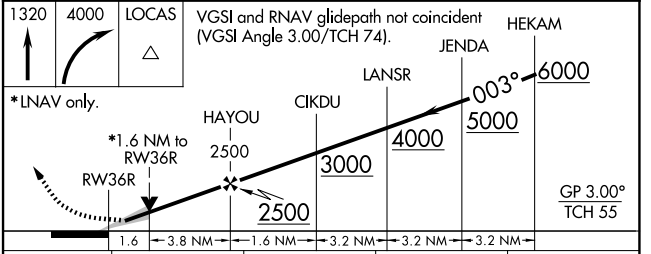
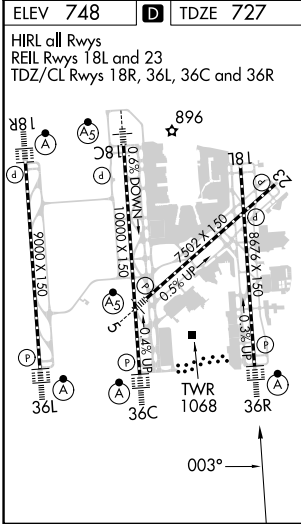
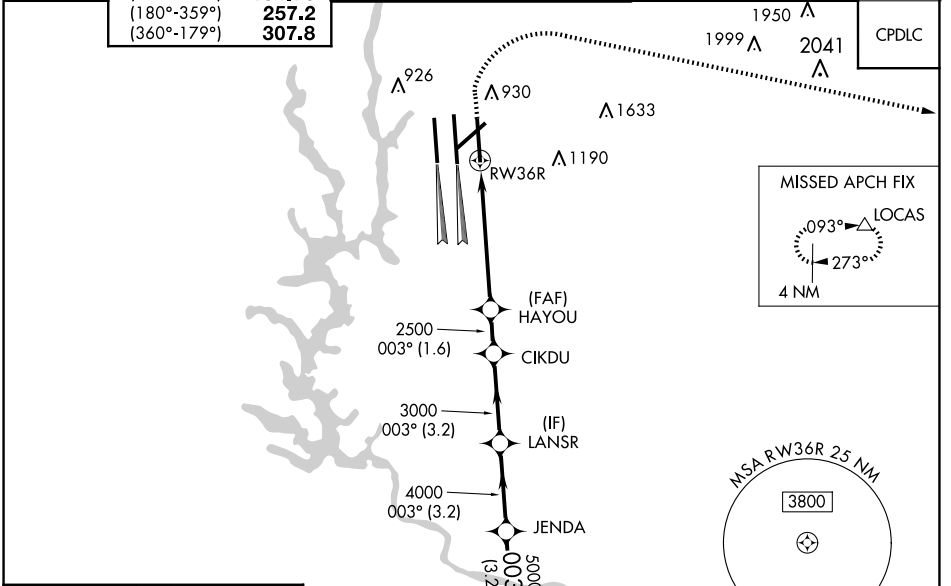
WAAS CH <b>90100</b> <b>W36D</b>	APP CRS <b>003°</b>	Rwy Idg TDZE <b>727</b> Apt Elev <b>748</b>	<b>8390</b>
--	------------------------	---	-------------

# RNAV (GPS) Y RWY 36R

CHARLOTTE/DOUGLAS INTL (CLT)

RNP APCH.	<p>▼ Circling NA at night. For uncompensated Baro-VNAV systems, LNAV/VNAV NA below -11°C or above 54°C. Simultaneous approach authorized. Use of FD or AP required during simultaneous operations. LNAV procedure NA during simultaneous operations. For inop ALSF, increase LNAV/VNAV all Cats visibility to 1/2 mile.</p>	<p>ALSF-2 ▲</p>	<p>MISSED APPROACH: Climb to 1320 then climbing right turn to 4000 direct LOCAS and hold.</p>
-----------	---	---------------------	---

D-ATIS ARR <b>121.15</b> DEP <b>132.1</b>	CHARLOTTE APP CON (001°-119°) <b>128.32</b> (120°-295°) <b>120.05</b> (296°-360°) <b>134.75</b> (180°-359°) <b>257.2</b> (360°-179°) <b>307.8</b>	CHARLOTTE TOWER (Rwys 18L-36R) <b>118.1 257.8</b> (Rwy 18C-36C) <b>126.4 257.8</b> (Rwy 18R-36L) <b>133.35 257.8</b>	GND CON <b>121.8 348.6</b> (WEST) <b>121.9 348.6</b> (EAST)	CLNC DEL <b>127.15</b> <b>348.6</b>
---	--	---	---	---



CATEGORY	A	B	C	D
LPV DA	927/18		200 (200-1/2)	
LNAV/VNAV DA	1229-1 1/4		502 (500-1 1/4)	
LNAV MDA	1320/24	593 (600-1/2)	1320-1 1/4	593 (600-1 1/4)
<b>C</b> CIRCLING	1380-1	632 (700-1)	1500-2 1/4 752 (800-2 1/4)	1500-2 1/2 752 (800-2 1/2)

SE-2, 23 JAN 2025 to 20 FEB 2025

SE-2, 23 JAN 2025 to 20 FEB 2025