

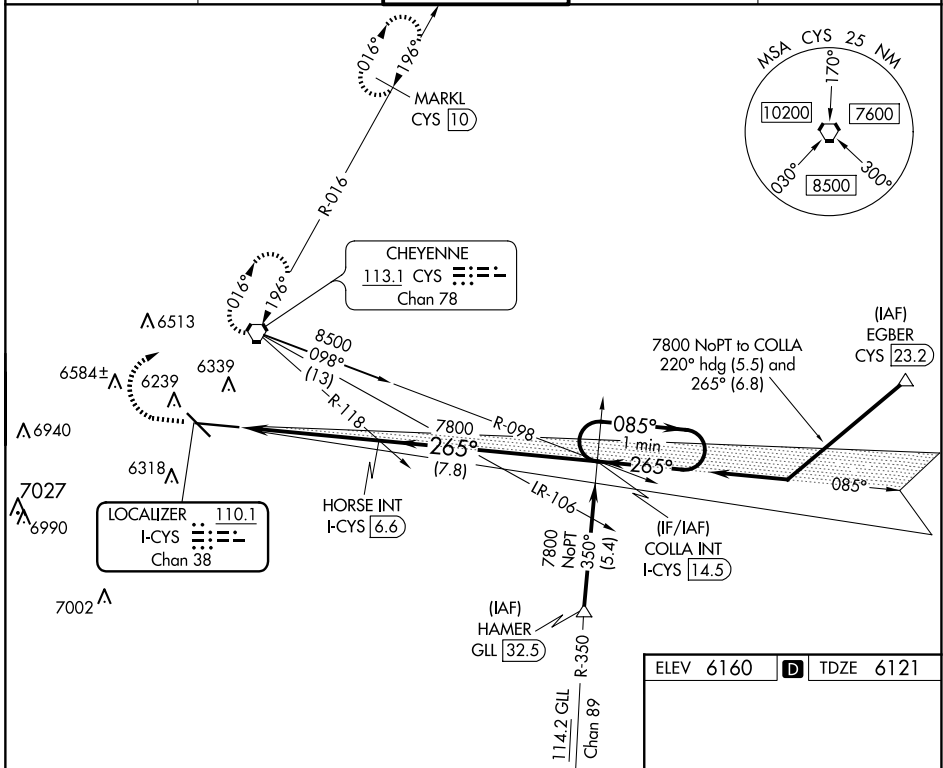
LOC/DME I-CYS 110.1 Chan 38	APP CRS 265°	Rwy ldg TDZE Apt Elev	7985 6121 6160
---	------------------------	-----------------------------	---

ILS or LOC RWY 27

CHEYENNE RGNL/JERRY OLSON FLD (CYS)

V A # RVR 1800 authorized with the use of FD or AP ASR/PAR or HUD to DA.	MALSRS 	MISSED APPROACH: Climb to 6800, then climbing right turn to 8000 direct CYS VORTAC and hold, continue climb-in-hold to 8000 (TACAN aircraft continue on CYS VORTAC R-016 to MARKL/CYS 10 DME and hold N, RT, 196° inbound).
--	------------	---

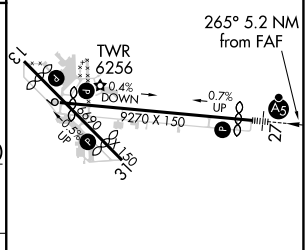
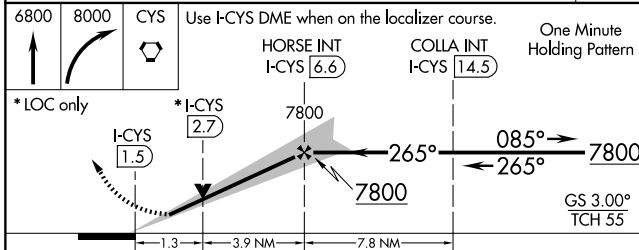
ATIS 134.425 278.3	CHEYENNE APP CON★ 124.55 263.075	CHEYENNE TOWER★ 118.7 (CTAF) 0 257.8	GND CON 121.9 254.275	UNICOM 122.95
------------------------------	--	--	---------------------------------	-------------------------



NW-1, 23 JAN 2025 to 20 FEB 2025

NW-1, 23 JAN 2025 to 20 FEB 2025

ELEV 6160	D TDZE 6121
-----------	--------------------



CATEGORY	A	B	C	D
S-ILS 27 #	6321/24		200 (200-1/2)	
S-LOC 27	6560/24 439 (400-1/2)		6560/40 439 (400-3/4)	
C CIRCLING	6640-1 480 (500-1)		6900-2 740 (800-2) 6920-2 1/2 760 (800-2 1/2)	

REIL Rwy 9, 13, and 31 0					
HIRL Rwy 9-27 0					
MIRL Rwy 13-31 0					
FAF to MAP 5.2 NM					
Knots	60	90	120	150	180
Min:Sec	5:12	3:28	2:36	2:05	1:44