

BACHMAN ONE DEPARTURE
(BACH1 . TTT) 050CT23

(BACH1 . TTT) 24305
BACHMAN ONE DEPARTURE

A1-106 (FAA)

DALLAS LOVE FLD (DAL)
DALLAS, TEXAS

LONE STAR DEP CON
118.55 290.35
D-ATIS
120.15
CLNC DEL
127.9
CPDLC
GND CON
121.75 348.6
LOVE TOWER
123.7 239.3

DME and RADAR required.

LITTLE ROCK
113.9 LT : : : :
Chan 86

TOP ALTITUDE:
5000

BONHAM
114.6 BYP : : : :
Chan 93

TEXARKANA
116.3 TXK : : : :
Chan 110

TAKEOFF MINIMUMS
Rwys 13L, 31L/R: NA - Noise Abatement.
Rwy 13R: Standard with minimum climb of
482' /NM to 1700.

NOTE: This DP is to be used only upon
assignment by Love Tower normally
between 2100-0600 LCL time.
NOTE: SOLDO Transition: ATC assigned.
NOTE: BELCHER Transition: For aircraft
inbound to Jackson, Monroe and
Shreveport terminal areas.

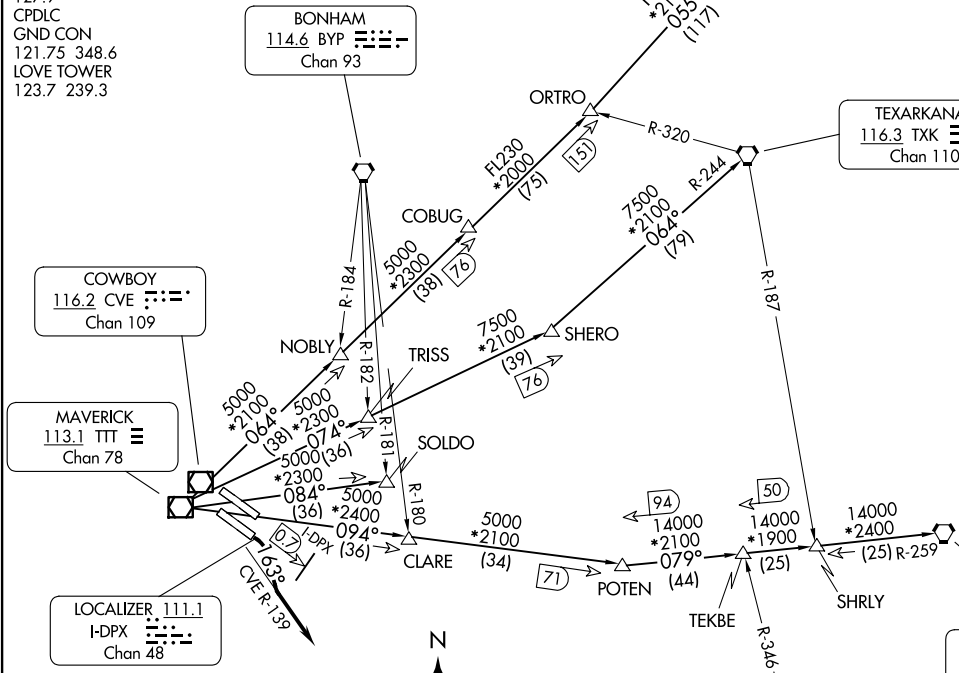
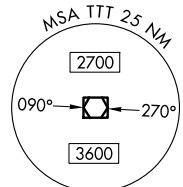
COWBOY
116.2 CVE : : : :
Chan 109

MAVERICK
113.1 TTT : : : :
Chan 78

LOCALIZER 111.1
I-DPX : : : :
Chan 48

GREGG COUNTY
112.9 GGG : : : :
Chan 76

BELCHER
117.4 EIC : : . . .
Chan 121



NOTE: Chart not to scale.

(CONTINUED ON FOLLOWING PAGE)

DALLAS, TEXAS
DALLAS LOVE FLD (DAL)

BACHMAN ONE DEPARTURE



DEPARTURE ROUTE DESCRIPTION

TAKEOFF RUNWAY 13R: Climb on heading 163° no later than 0.7 DME outbound on I-DPX localizer southeast course to intercept and climb on CVE R-139 for RADAR vectors to appropriate route, unless otherwise advised maintain 5000, expect filed altitude 10 minutes after departure.

BELCHER TRANSITION (BACH1.EIC): From over TTT VOR/DME on TTT R-094 to POTEN, then on EIC R-259 to EIC VORTAC.

LITTLE ROCK TRANSITION (BACH1.LIT): From over TTT VOR/DME on TTT R-064 to ORTRO, then on LIT R-235 to LIT VORTAC.

SOLDO TRANSITION (BACH1.SOLDO): From over TTT VOR/DME on TTT R-084 to SOLDO.

TEXARKANA TRANSITION (BACH1.TXK): From over TTT VOR/DME on TTT R-074 to SHERO, then on TXK R-244 to TXK VORTAC.

SC-2, 23 JAN 2025 to 20 FEB 2025

SC-2, 23 JAN 2025 to 20 FEB 2025