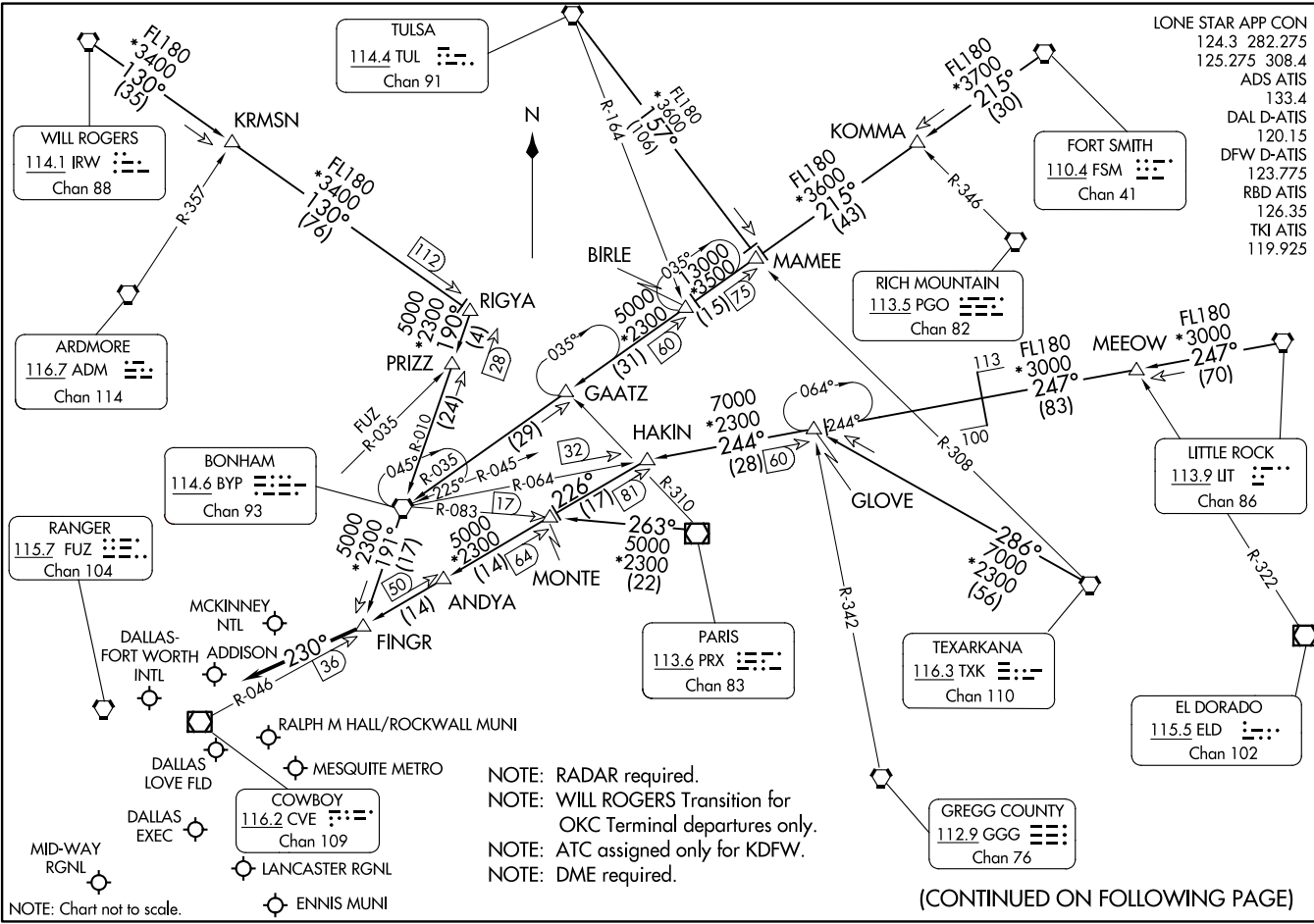


LONE STAR APP CON
 124.3 282.275
 125.275 308.4
 ADS ATIS 133.4
 DAL D-ATIS 120.15
 DFW D-ATIS 123.775
 RBD ATIS 126.35
 TKI ATIS 119.925



NOTE: RADAR required.
 NOTE: WILL ROGERS Transition for OKC Terminal departures only.
 NOTE: ATC assigned only for KDFW.
 NOTE: DME required.

(CONTINUED ON FOLLOWING PAGE)

ARRIVAL ROUTE DESCRIPTION

BONHAM TRANSITION (BYP.FINGR9): From over BYP VORTAC on BYP R-191 to FINGR. Thence

FORT SMITH TRANSITION (FSM.FINGR9): From over FSM VORTAC on FSM R-215 to MAMEE, then on BYP R-035 to BYP VORTAC, then on BYP R-191 to FINGR. Thence

LITTLE ROCK TRANSITION (LIT.FINGR9): From over LIT VORTAC on LIT R-247 to MEEOW, then on LIT R-247 and BYP R-064 to GLOVE, then on BYP R-064 to HAKIN, then on CVE R-046 to FINGR. Thence

PARIS TRANSITION (PRX.FINGR9): From over PRX VOR/DME on PRX R-263 to MONTE, then on CVE R-046 to FINGR. Thence

RIGYA TRANSITION (RIGYA.FINGR9): From over RIGYA on BYP R-010 to BYP VORTAC, then on BYP R-191 to FINGR. Thence

TEXARKANA TRANSITION (TXK.FINGR9): From over TXK VORTAC on TXK R-286 to GLOVE, then on BYP R-064 to HAKIN, then on CVE R-046 to FINGR. Thence

TULSA TRANSITION (TUL.FINGR9): From over TUL VORTAC on TUL R-157 to MAMEE, then on BYP R-035 to BYP VORTAC, then on BYP R-191 to FINGR. Thence

WILL ROGERS TRANSITION (IRW.FINGR9): From over IRW VORTAC on IRW R-130 to RIGYA, then on BYP R-010 to BYP VORTAC, then on BYP R-191 to FINGR. Thence

. . . . from FINGR, then on heading 230° or as assigned by ATC. Expect RADAR vectors to final approach course.

SC-2, 23 JAN 2025 to 20 FEB 2025

SC-2, 23 JAN 2025 to 20 FEB 2025