

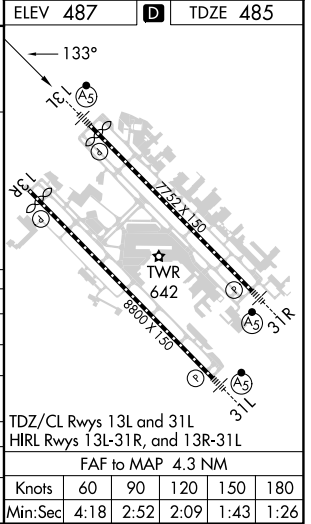
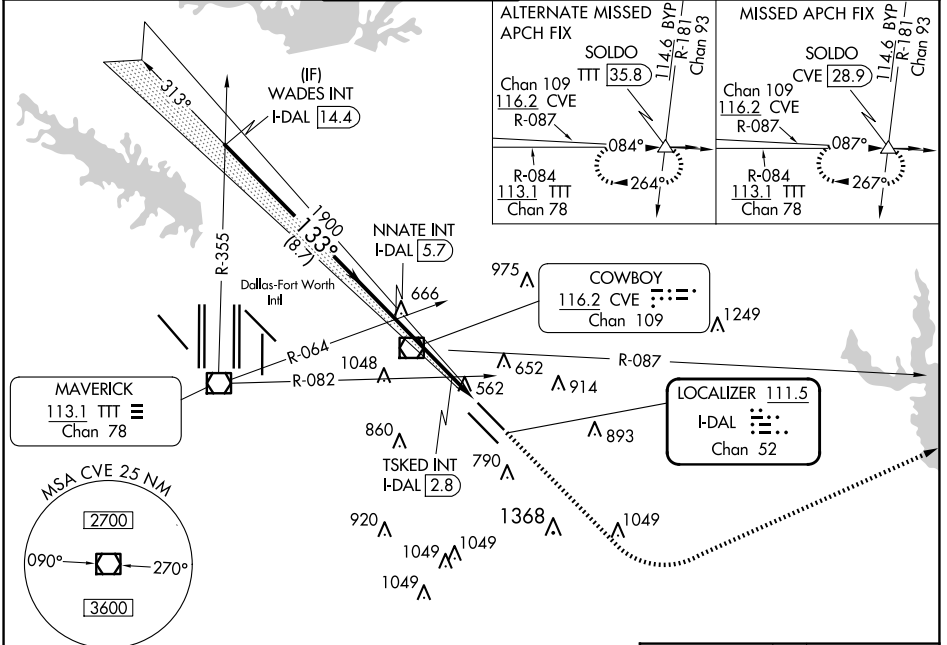
LOC/DME I-DAL	APP CRS	Rwy Idg	7352
111.5	133°	TDZE	485
Chan 52		Apt Elev	487

ILS or LOC RWY 13L

DALLAS LOVE FLD (DAL)

RADAR required for procedure entry.		MALSR	MISSED APPROACH: Climb to 1000 then climbing left turn to 3000 on heading 060° and CVE VOR/DME R-087 to SOLDLO INT/CVE 28.9 DME and hold.
Simultaneous approach authorized.			

D-ATIS 120.15	LONE STAR APP CON NORTH 124.3 282.275 SOUTH 125.2 343.65	LOVE TOWER 123.7 239.3	GND CON 121.75 348.6	CLNC DEL 127.9	CPDLC
-------------------------	--	----------------------------------	--------------------------------	--------------------------	-------



SC-2, 23 JAN 2025 to 20 FEB 2025

SC-2, 23 JAN 2025 to 20 FEB 2025