

LOC/DME I-DPX 111.1 Chan 48	APP CRS 133°	Rwy ldg TDZE Apt Elev 8310 479 487
---	------------------------	--

ILS or LOC RWY 13R

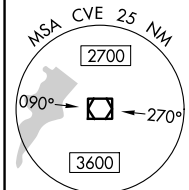
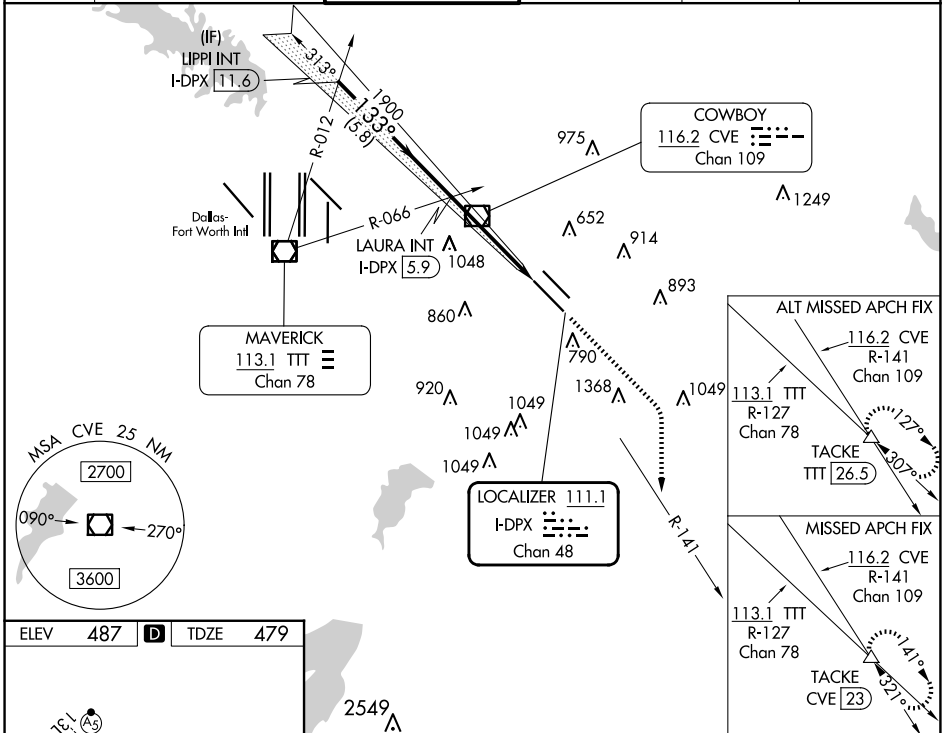
DALLAS LOVE FLD (DAL)

DME required.
RADAR required for procedure entry.

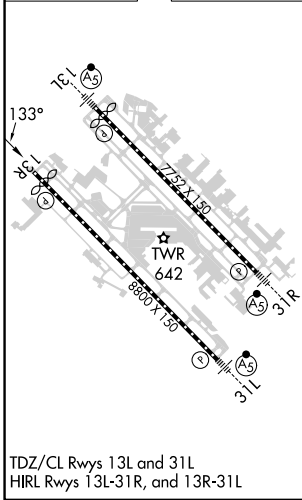
Simultaneous approach authorized.

MISSED APPROACH: Climb to 1000 then climbing right turn to 3000 on heading 150° and CVE VOR/DME R-141 to TACKE/CVE 23 DME and hold.

D-ATIS 120.15	LONE STAR APP CON NORTH 124.3 282.275 SOUTH 125.2 343.65	LOVE TOWER 123.7 239.3	GND CON 121.75 348.6	CLNC DEL 127.9	CPDLC
-------------------------	--	----------------------------------	--------------------------------	--------------------------	-------



ELEV 487	D	TDZE 479
----------	----------	----------



LIPPI INT I-DPX 11.6	VGSI and ILS glidepath not coincident (VGSI Angle 3.00/TCH 52).		1000	3000	CVE	TACKE
2500	133°	1900	↑	hdg 150°	R-141	△
GS 3.00° TCH 47		I-DPX 2.9		I-DPX 1.6		
CATEGORY	A	B	C	D		
S-ILS 13R	679/40		200 (200-¾)			
S-LOC 13R	960/55	481 (500-1)	960-1¾	481 (500-1¾)		
C CIRCLING	1080-1 593 (600-1)	1140-1 653 (700-1)	1220-2 733 (800-2)	1520-3 1033 (1100-3)		

SC-2, 23 JAN 2025 to 20 FEB 2025

SC-2, 23 JAN 2025 to 20 FEB 2025