

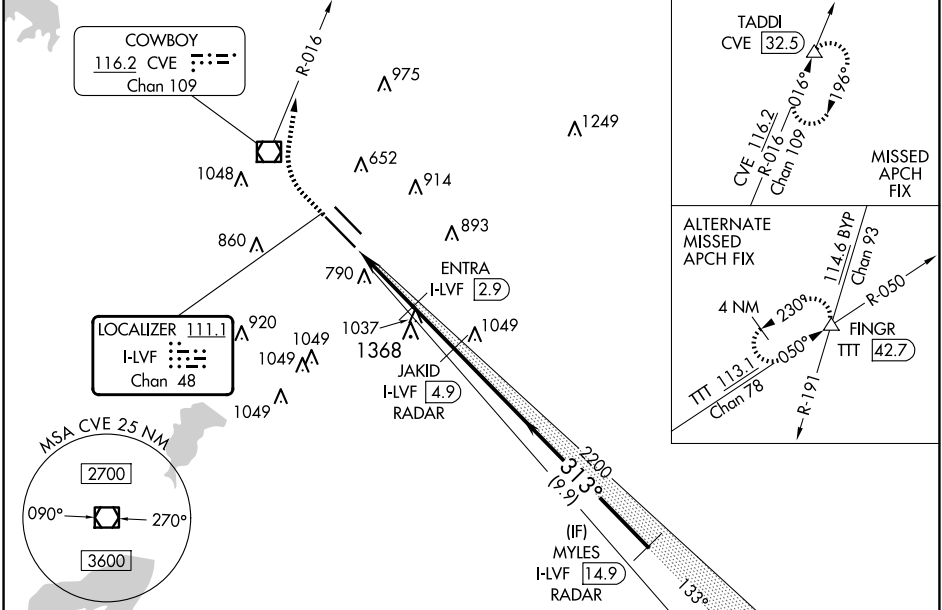
LOC/DME I-LVF 111.1 Chan 48	APP CRS 313°	Rwy Idg TDZE Apt Elev	8000 477 487
--	------------------------	-----------------------------	---

ILS or LOC RWY 31L

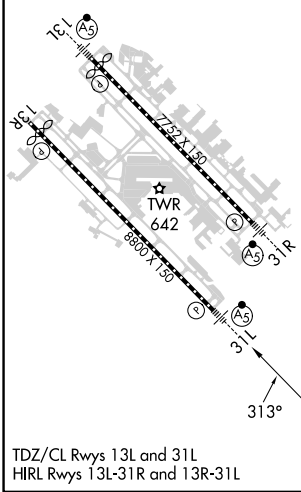
DALLAS LOVE FLD (DAL)

DME required. RADAR required for procedure entry.		MALS R	MISSED APPROACH: Climb to 4000 direct CVE VOR/DME and on CVE R-016 to TADDI/CVE 32.5 DME and hold.		
Simultaneous approach authorized.					

D-ATIS 120.15	LONE STAR APP CON NORTH 124.3 282.275 SOUTH 125.2 343.65	LOVE TOWER 123.7 239.3	GND CON 121.75 348.6	CLNC DEL 127.9	CPDLC
-------------------------	--	----------------------------------	--------------------------------	--------------------------	-------



ELEV 487	D	TDZE 477
----------	---	----------



4000	CVE	CVE R-016	TADDI	JAKID I-LVF 4.9 RADAR	MYLES I-LVF 14.9 RADAR
↑				2200	2500
I-LVF DME ANTENNA		ENTRA I-LVF 2.9		313°	
I-LVF 0.2		I-LVF 2.3		GS 3.08° TCH 55	
-2.5 NM		-0.6 NM		-2.1 NM	
-9.9 NM					
CATEGORY	A		B	C	D
S-ILS 31L	677/18		200 (200-½)		
S-LOC 31L	1340/24 863 (900-½)	1340/40 863 (900-¾)	1340-2	863 (900-2)	
CIRCLING	1340-1¼	853 (900-1¼)	1340-2½ 853 (900-2½)	1520-3 1033 (1100-3)	

SC-2, 23 JAN 2025 to 20 FEB 2025

SC-2, 23 JAN 2025 to 20 FEB 2025