

# RNAV (RNP) Z RWY 31L

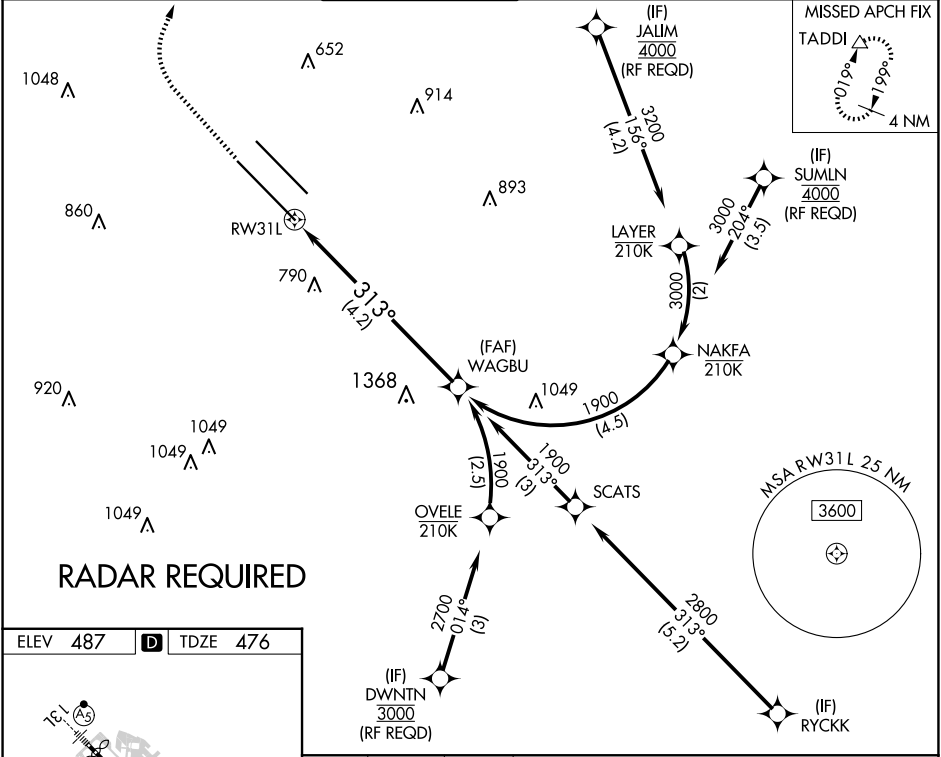
DALLAS LOVE FLD (DAL)

APP CRS <b>313°</b>	Rwy Idg <b>8000</b>
	TDZE <b>476</b>
	Apt Elev <b>487</b>

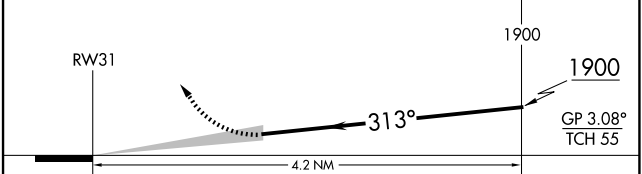
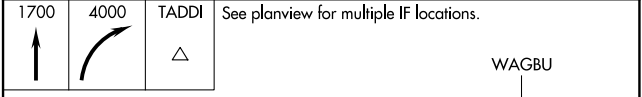
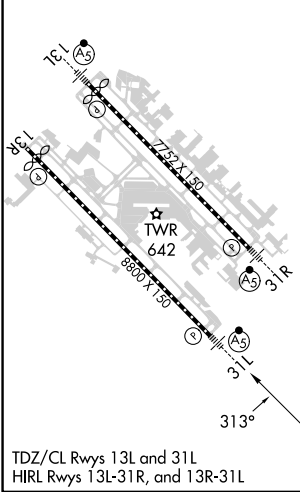
▼ For uncompensated Baro-VNAV systems, procedure NA below -5°C (23°F) or above 48°C (119°F). Simultaneous approach authorized. GPS required. Use of FD or AP providing RNAV track guidance required during simultaneous operations. For inop MALSR, increase RNP 0.30 visibility all Cats to 2½ miles.

MALSR MISSED APPROACH: Climb to 1700 then climbing right turn to 4000 direct TADDI and hold.

D-ATIS <b>120.15</b>	LONE STAR APP CON NORTH <b>124.3 282.275</b> SOUTH <b>125.2 343.65</b>	LOVE TOWER <b>123.7 239.3</b>	GND CON <b>121.75 348.6</b>	CLNC DEL <b>127.9</b>	CPDLC
-------------------------	--	----------------------------------	--------------------------------	--------------------------	-------



ELEV 487	<b>D</b>	TDZE 476
----------	----------	----------



CATEGORY	A	B	C	D
RNP 0.30 DA		1117-1½	641 (700-1½)	

## AUTHORIZATION REQUIRED

SC-2, 23 JAN 2025 to 20 FEB 2025