

WAAS CH <b>90414</b> <b>W06B</b>	APP CRS <b>061°</b>	Rwy Idg TDZE Apt Elev	<b>7001</b> <b>1009</b> <b>1009</b>
--	------------------------	-----------------------------	---

# RNAV (GPS) RWY 6R

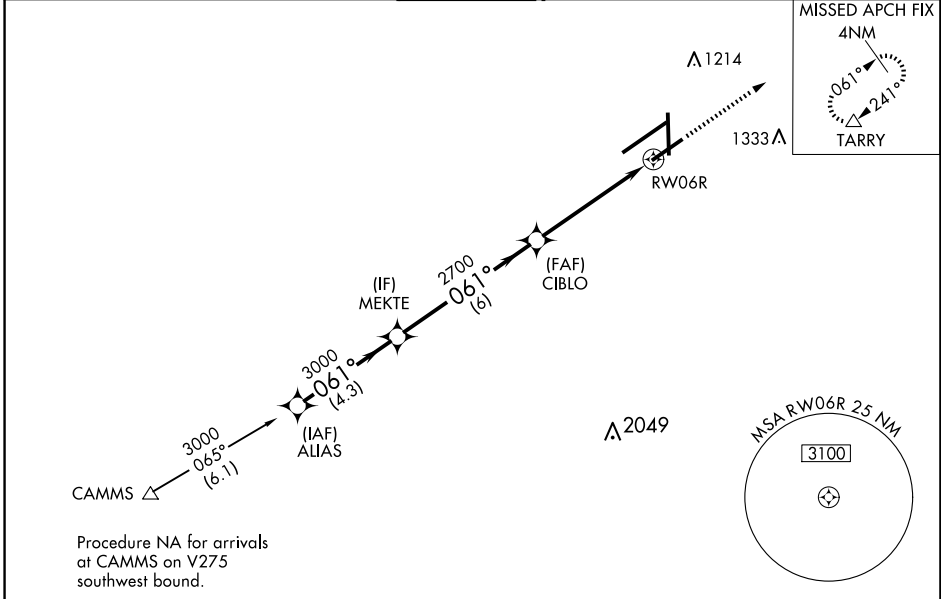
JAMES M COX DAYTON INTL (DAY)

RNP APCH - GPS.

▼ For uncompensated Baro-VNAV systems, LNAV/VNAV NA below -19°C or above 54°C. Rwy 6R helicopter visibility reduction below 3/4 SM NA. Simultaneous approach authorized. LNAV procedure NA during simultaneous operations. Use of FD or AP required during simultaneous operations.

MISSED APPROACH: Climb to 3000 direct TARRY and hold.

ATIS <b>125.8</b>	COLUMBUS APP CON <b>134.45 323.15</b>	DAYTON TOWER <b>119.9 257.7</b>	GND CON <b>121.9</b>	CLNC DEL <b>121.75</b>
----------------------	--	------------------------------------	-------------------------	---------------------------

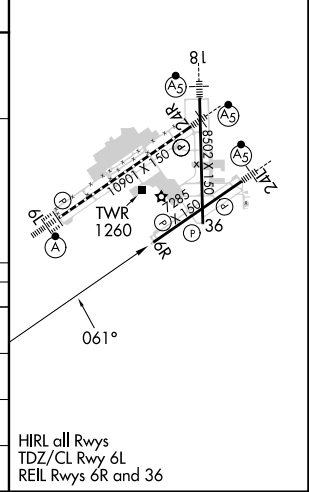


Procedure NA for arrivals at CAMMS on V275 southwest bound.

ELEV 1009	<b>D</b>	TDZE 1009
-----------	----------	-----------

VGSI and RNAV glidepath not coincident (VGSI Angle 3.00/TCH 50).

	ALIAS	MEKTE	CIBLO	RW06R
	3000	3000	2700	1.5 NM to RW06R
GP 3.00°	061°	061°		
TCH 53				
	4.3 NM	6 NM	3.6 NM	1.5 NM
CATEGORY	A	B	C	D
LPV DA		1259-3/4	250 (300-3/4)	
LNAV/ VNAV DA		1496-13/4	487 (500-13/4)	
LNAV MDA	1520-1	511 (600-1)	1520-1 1/2 511 (600-1 1/2)	1520-1 3/4 511 (600-1 3/4)
<b>C</b> CIRCLING	1580-1	571 (600-1)	1580-1 1/2 571 (600-1 1/2)	1640-2 631 (700-2)



EC-2, 23 JAN 2025 to 20 FEB 2025

EC-2, 23 JAN 2025 to 20 FEB 2025