

DAYTON, OHIO

ILS or LOC RWY 23R

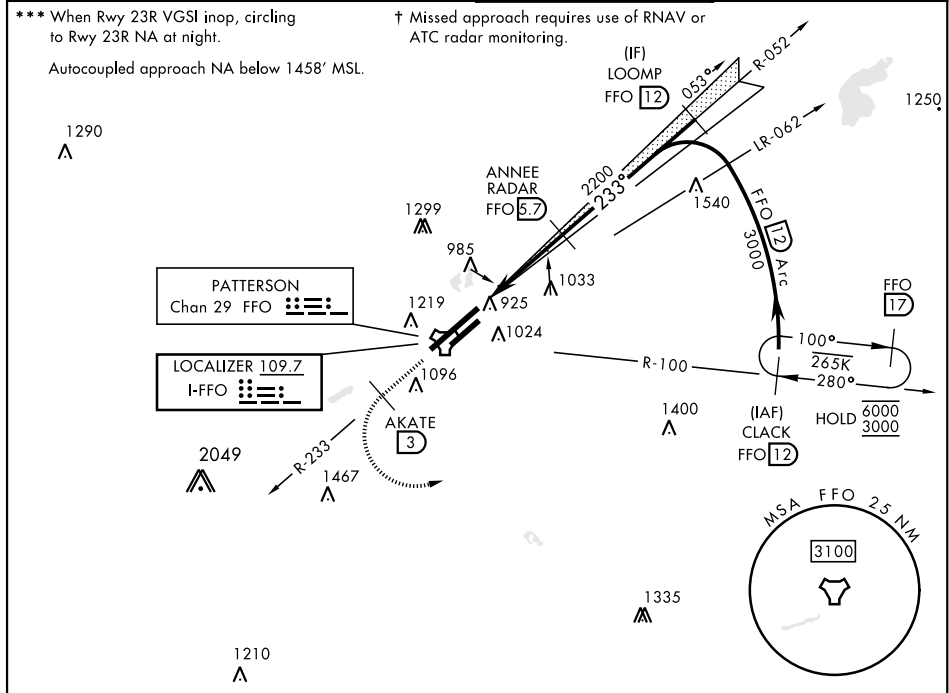
WRIGHT-PATTERSON AFB (KFFO)

LOC I-FFO 109.7	APCH CRS 233°	Rwy Idg 12,600 THRE 823 Arprt Elev 823
---------------------------	-------------------------	--

[USAF]

DME or RADAR required for Localizer.	ALSF-1 	† MISSED APPROACH: Climb via FFO R-233 to 2000, at 3 DME turn left direct CLACK to 3000 and hold.
--------------------------------------	------------	---

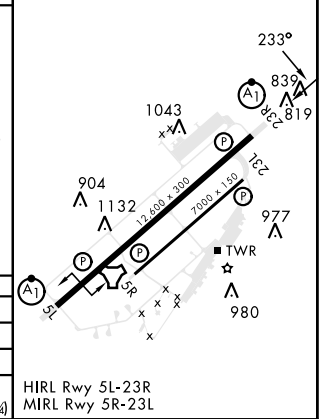
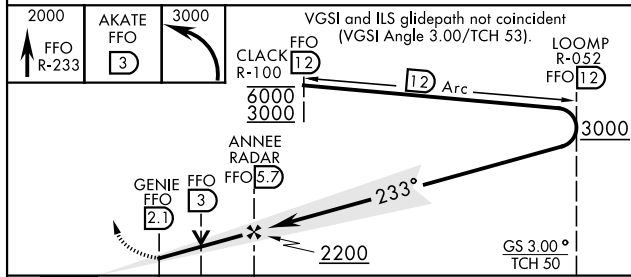
ATIS 124.475 269.9	COLUMBUS APP CON 118.85 269.275	PATTERSON TOWER 127.8 281.45	GND CON 121.8 335.8
------------------------------	---	--	-------------------------------



EC-2, 23 JAN 2025 to 20 FEB 2025

EC-2, 23 JAN 2025 to 20 FEB 2025

EMERG SAFE ALT 100 NM 3700	ELEV 823	THRE 823
----------------------------	----------	----------



CATEGORY	A	B	C	D	E	
S-ILS 23R*	1023/24		200	(200-½)		
S-LOC 23R**	1320/24	497 (500-½)	1320/50	497	(500-1)	
CIRCLING***	1380-1	1440-1	1560-2	1620-2½	1620-2¾	HIRL Rwy 5L-23R MIRL Rwy 5R-23L
	557 (600-1)	617 (600-1)	737 (800-2)	797 (800-2½)	797 (800-2¾)	

DAYTON, OHIO 39° 50' N-84° 03' W WRIGHT-PATTERSON AFB (KFFO)

Amdt 7 10AUG23

ILS or LOC RWY 23R