

DAYTON, OHIO

TACAN RWY 23R

TACAN FFO Chan 29	APCH CRS 230°	Rwy Ildg THRE 12,600 823 Arprt Elev 823
-----------------------------	-------------------------	---

[USAF]

WRIGHT-PATTERSON AFB (KFFO)

▼ * When ALS inop, increase CAT AB RVR to 55 and vis to 1 mile, CAT CDE vis to 1½ miles.

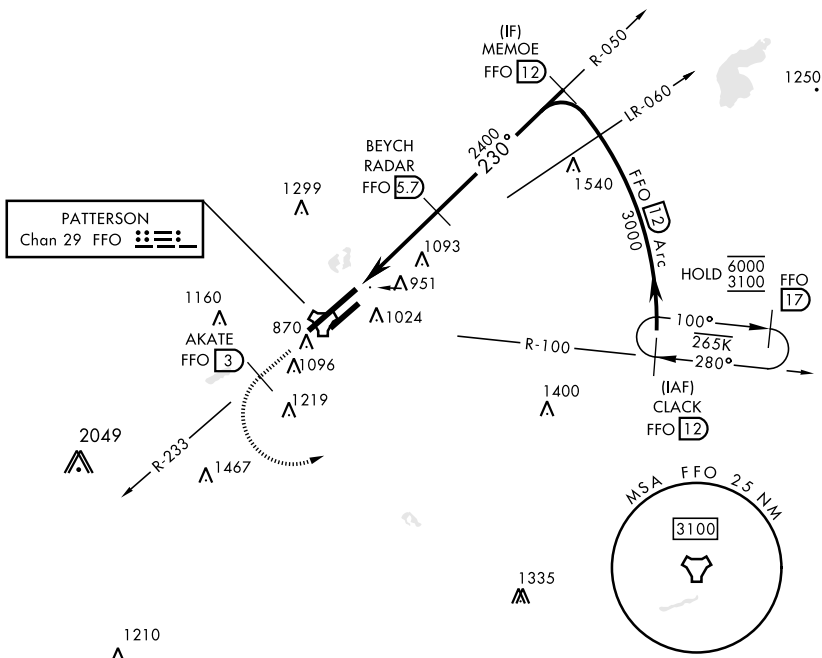
 ALSF-1

 † MISSED APPROACH: Climb to 2000 via FFO R-233, at 3 DME turn left direct CLACK climbing to 3000 and hold.

ATIS 124.475 269.9	COLUMBUS APP CON 118.85 269.275	PATTERSON TOWER 127.8 281.45	GND CON 121.8 335.8
------------------------------	---	--	-------------------------------

** When Rwy 23R VGSI inop, circling to Rwy 23R NA at night.

† Missed approach requires use of RNAV or ATC radar monitoring.

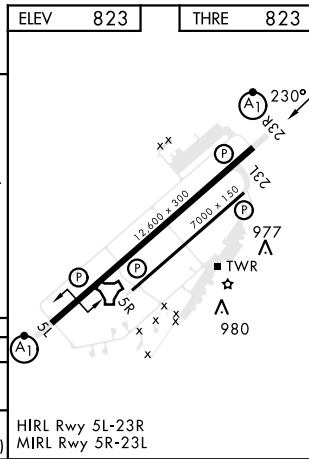
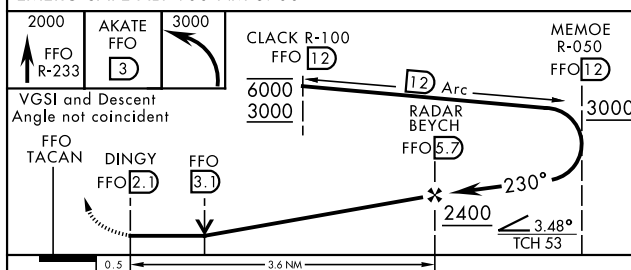


EC-2, 23 JAN 2025 to 20 FEB 2025

EC-2, 23 JAN 2025 to 20 FEB 2025

ELEV	823	THRE	823
------	-----	------	-----

EMERG SAFE ALT 100 NM 3700



CATEGORY	A	B	C	D	E
S-23R *	1360/24 537 (600-½)		1360/55 537 (600-1)		
CIRCLING **	1380-1 557 (600-1)	1440-1 617 (700-1)	1560-2 737 (800-2)	1620-2½ 797 (800-2½)	1620-2¾ 797 (800-2¾)

HIRL Rwy 5L-23R
MIRL Rwy 5R-23L

DAYTON, OHIO
Amdt 6 30APR15

39° 50'N-84° 03'W

WRIGHT-PATTERSON AFB (KFFO)

TACAN RWY 23R