

DAYTON, OHIO


# TACAN RWY 5L

TACAN FFO Chan <b>29</b>	APCH CRS <b>059°</b>	Rwy Ldg TDZE Arprt Elev <b>12,600 803 823</b>
--------------------------	----------------------	---

[USAF]

WRIGHT-PATTERSON AFB (KFFO)

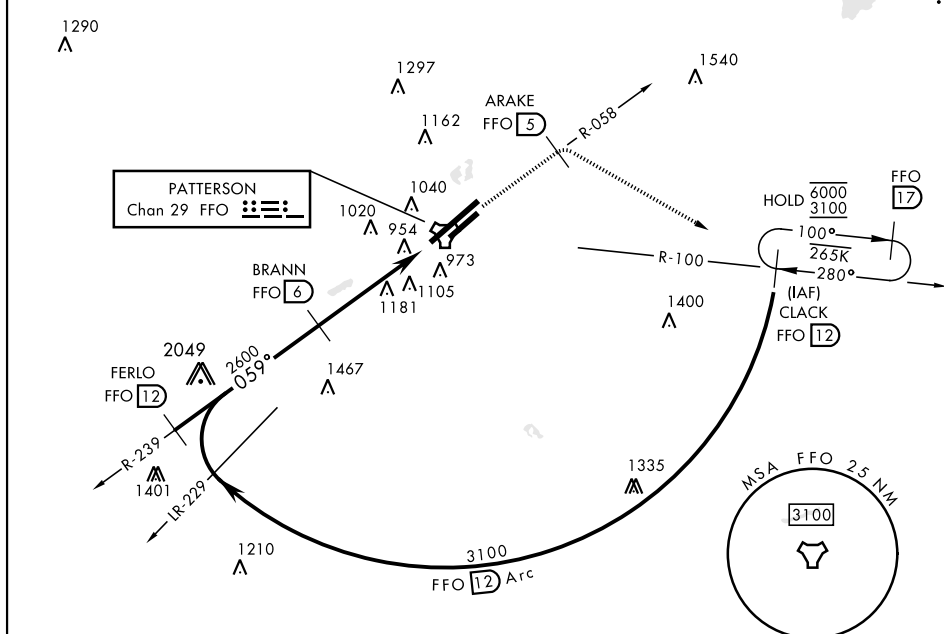
▼ \* When ALS inop, increase RVR CAT AB to 55 and vis to 1 mile, CAT CDE vis to 1¾ miles.  
 \*\* When Rwy 23R VGSI inop, circling to Rwy 23R NA at night.

ALSF-1 

† MISSED APPROACH: Climb to 2000 via FFO R-058 to 5 DME, turn right direct CLACK climbing to 3100 and hold.

ATIS <b>124.475 269.9</b>	COLUMBUS APP CON <b>118.85 269.275</b>	PATTERSON TOWER <b>127.8 281.45</b>	GND CON <b>121.8 335.8</b>
---------------------------	--	-------------------------------------	----------------------------

† Missed approach requires use of RNAV or ATC radar monitoring. 1250

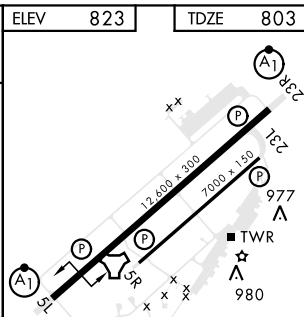
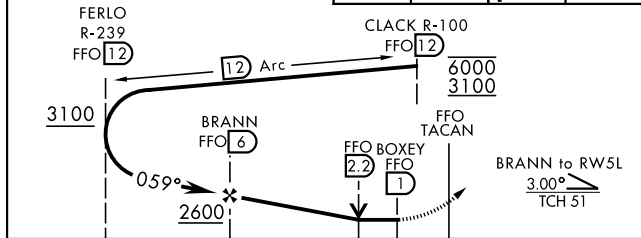


EC-2, 23 JAN 2025 to 20 FEB 2025

EC-2, 23 JAN 2025 to 20 FEB 2025

EMERG SAFE ALT 100 NM 3700

2000 FFO R-058	ARAKE FFO 5	3100	CLACK FFO 12	ELEV 823	TDZE 803
----------------	-------------	------	--------------	----------	----------



CATEGORY	A	B	C	D	E
S-5L *	1400/24	597 (600-½)	1400-1¼	597 (600-1¼)	
CIRCLING **	1400-1 577 (600-1)	1440-1 617 (700-1)	1560-2 737 (800-2)	1620-2½ 797 (800-2½)	1620-2¾ 797 (800-2¾)

HRL Rwy 5L-23R  
MIRL Rwy 5R-23L

DAYTON, OHIO  
Amdt 7 05JAN17

39° 50' N-84° 03' W

WRIGHT-PATTERSON AFB (KFFO)

# TACAN RWY 5L