

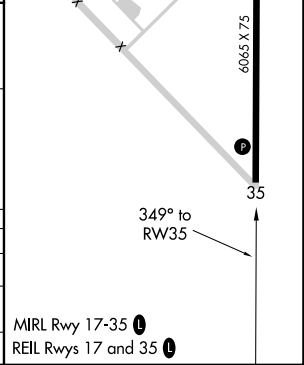
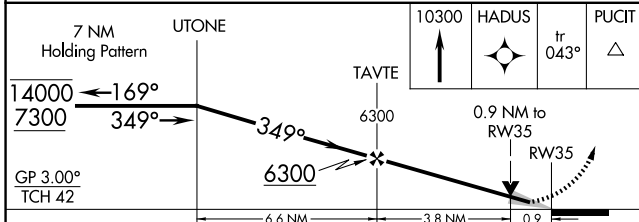
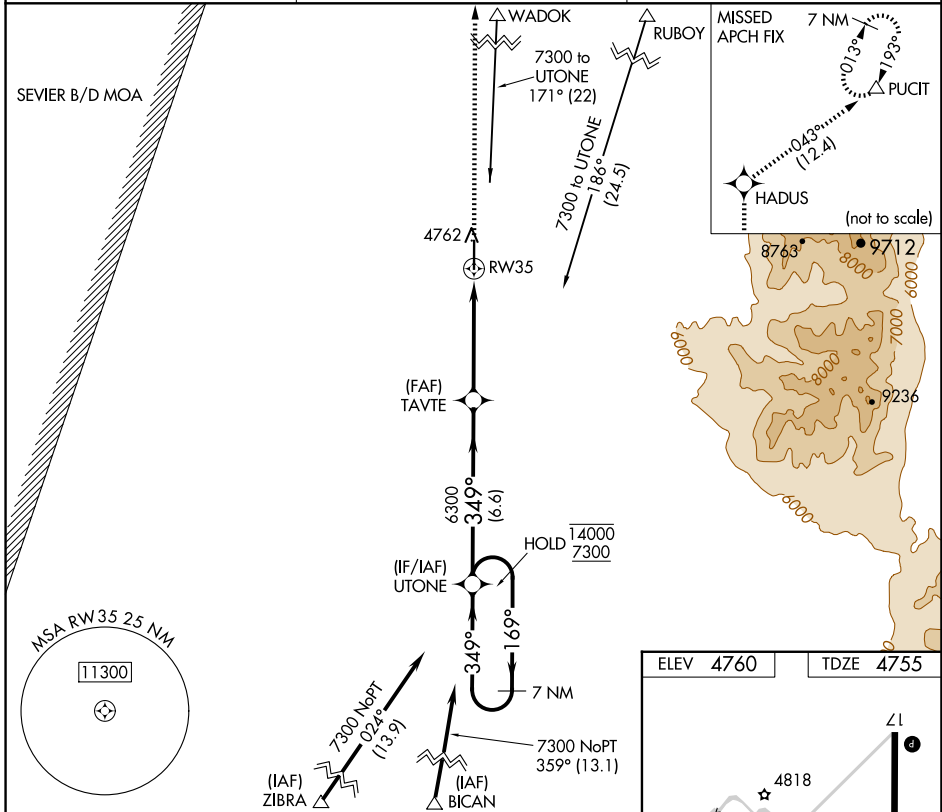
WAAS CH 61124 W35A	APP CRS 349°	Rwy Idg TDZE Apt Elev	6065 4755 4760
--	------------------------	-----------------------------	---

RNAV (GPS) RWY 35

DELTA MUNI (DTA)

RNP APCH-GPS.	MISSED APPROACH: Climb to 10300 direct HADUS and on track 043° to PUCIT and hold.
▼ For uncompensated Baro-VNAV systems, LNAV/VNAV NA below -24°C or above 54°C.	

AWOS-3 127.75	SALT LAKE CENTER 127.825 239.025	UNICOM 122.8 (CTAF) 0
-------------------------	--	---------------------------------



7 NM Holding Pattern	UTONE	TAVTE	HADUS	PUCIT
14000 ← 169°	6300	10300	ir 043°	△
7300 → 349°	6300	0.9 NM to RW35		
GP 3.00° TCH 42	6.6 NM	3.8 NM	0.9	
CATEGORY	A	B	C	D
LPV DA		4955-1	200 (200-1)	
LNAV/VNAV DA		5005-1	250 (300-1)	
LNAV MDA		5080-1	325 (400-1)	

SW-4, 23 JAN 2025 to 20 FEB 2025

SW-4, 23 JAN 2025 to 20 FEB 2025