

VORTAC DTA <b>116.1</b> Chan <b>108</b>	APP CRS <b>166°</b>	Rwy Idg TDZE Apt Elev	<b>6065</b> <b>4759</b> <b>4760</b>
---	------------------------	-----------------------------	---

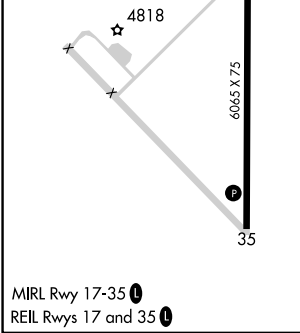
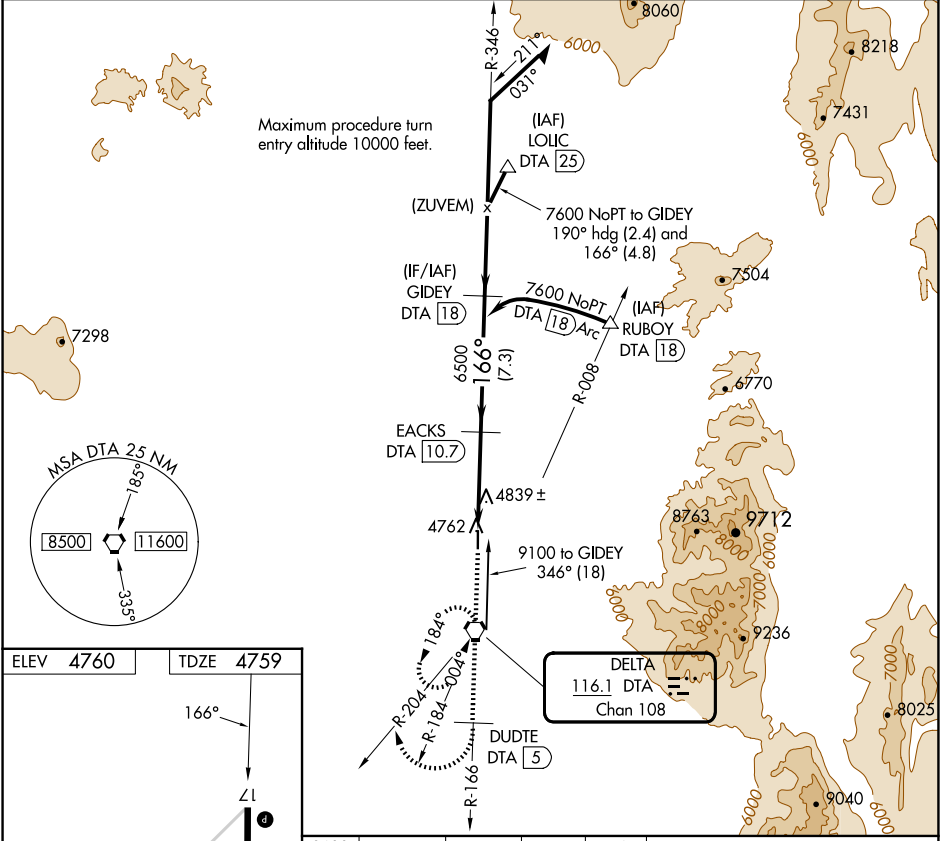
# VOR/DME RWY 17

DELTA MUNI (DTA)

**NA** Helicopter visibility reduction below 3/4 SM NA.  
If local altimeter setting not received, procedure NA.

MISSED APPROACH: Climb to 9600 via DTA VORTAC R-346 and R-166 to DUDTE/5 DME and climbing right turn via DTA VORTAC R-204 to DTA VORTAC and hold, continue climb-in-hold to 9600.

AWOS-3 <b>127.75</b>	SALT LAKE CENTER <b>127.825 239.025</b>	UNICOM <b>122.8 (CTAF)</b>
-------------------------	--	-------------------------------



9600	DTA R-346 and DTA R-166	DUDTE DTA [5]	DTA R-204	GIDEY DTA [18]	Remain within 10 NM
	DTA [6.3]	EACKS DTA [10.7]	DTA [5.3]	9100	346°
	DTA [5.3]	≤ 3.00° TCH 40	6500	7600	166°
	1 NM	4.4 NM	7.3 NM		VGSI and descent angles not coincident (VGSI Angle 3.00/TCH 48).
CATEGORY	A	B	C	D	
S-17		5100-1	341 (400-1)		
CIRCLING	5160-1 400 (400-1)	5220-1 460 (500-1)	5220-1½ 460 (500-1½)	5320-2 560 (600-2)	

DELTA, UTAH  
Amdt 2B 14JUL22

39°23'N-112°30'W

# DELTA MUNI (DTA) VOR/DME RWY 17

SW-4, 23 JAN 2025 to 20 FEB 2025

SW-4, 23 JAN 2025 to 20 FEB 2025