

# RNAV (GPS) RWY 35

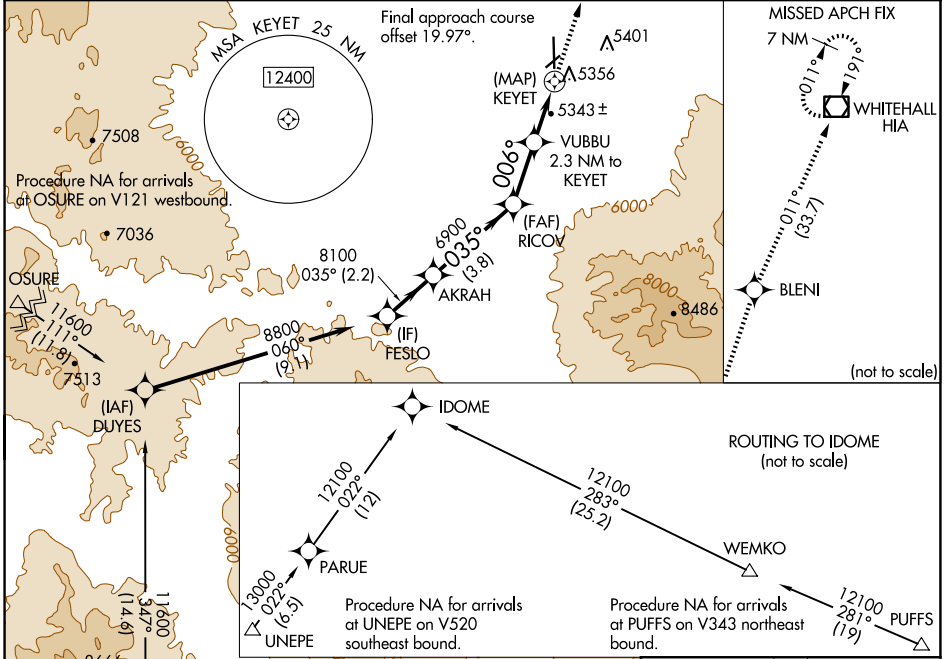
DILLON (DLN)

WAAS CH <b>49227</b> <b>W35A</b>	APP CRS <b>006°</b>	Rwy Idg TDZE Apt Elev	<b>6501</b> <b>5245</b> <b>5245</b>
--	------------------------	-----------------------------	---

**⚠** When local altimeter setting not received, procedure NA. DME/DME RNP-0.3 NA. Helicopter visibility reduction below 1 SM NA. Night landing: Rwy 4, 22, 35 NA.

**MISSED APPROACH:** Climb to 11000 direct BLENI and on track 011° to HIA VOR/DME and hold.

ASOS <b>135.225</b>	SALT LAKE CENTER <b>132.4 338.3</b>	UNICOM <b>122.8 (CTAF) 0</b>
------------------------	--	---------------------------------



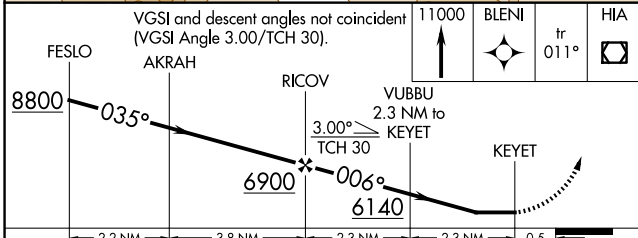
NW-1, 23 JAN 2025 to 20 FEB 2025

NW-1, 23 JAN 2025 to 20 FEB 2025

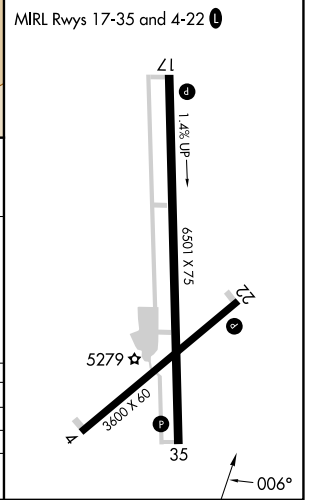
ELEV	<b>5245</b>	TDZE	<b>5245</b>
------	-------------	------	-------------

**SEE INSET FOR ROUTING TO IDOME**

**MIRL Rwy 17-35 and 4-22 0**



CATEGORY	A	B	C	D
LP MDA		5600-1	355 (500-1)	
LNAV MDA		5620-1	375 (400-1)	
<b>CIRCLING</b>	5760-1 515 (600-1)	5860-1 615 (700-1)	5980-2 735 (800-1)	6300-3 1055 (1100-3)



# RNAV (GPS) RWY 35