

VOR/DME DLN <b>113.0</b> Chan 77	APP CRS <b>185°</b>	Rwy Idg TDZE Apt Elev <b>N/A</b> <b>N/A</b> <b>5245</b>
--	------------------------	--

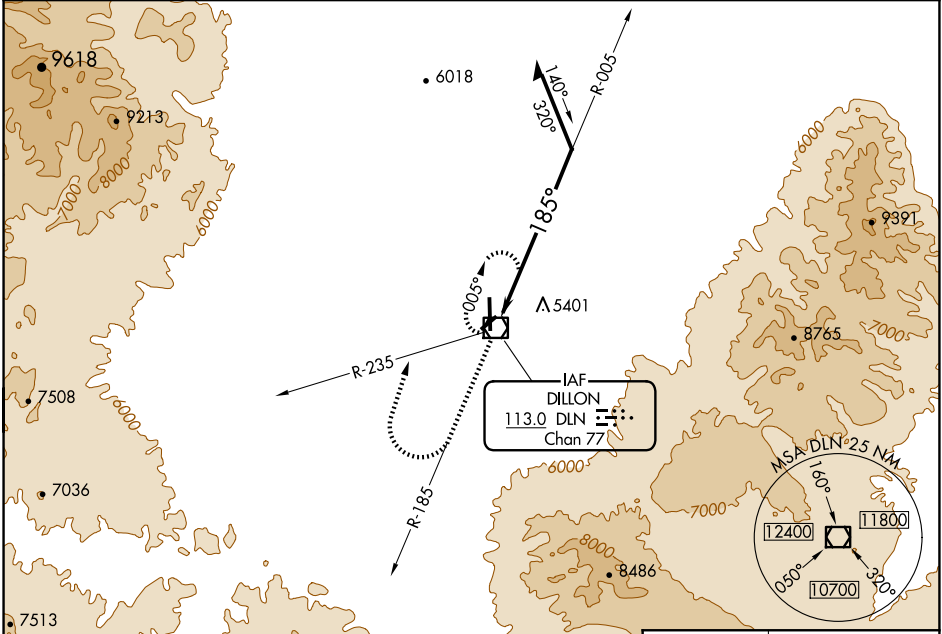
# VOR-A

DILLON (DLN)

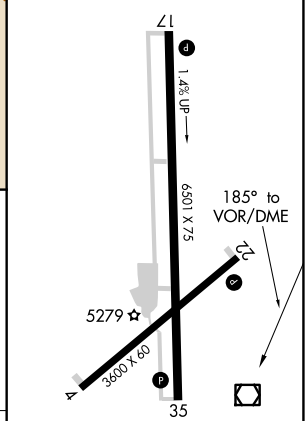
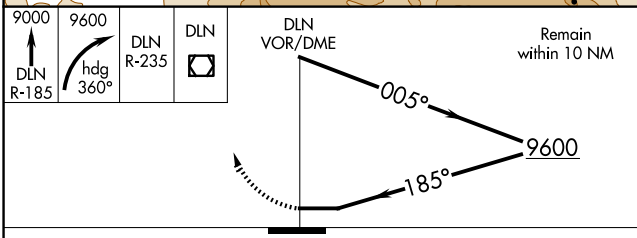
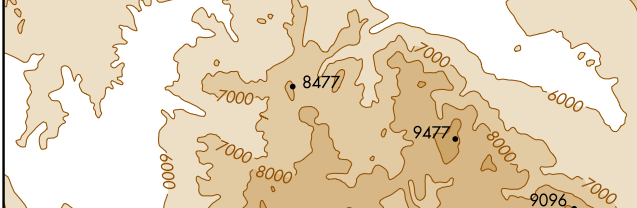
**⚠** When local altimeter setting not received, procedure NA. Night Landing: Rwy 4, 22, 35 NA. Helicopter visibility reduction below 1 SM not authorized.

**MISSED APPROACH:** Climb to 9000 on DLN VOR/DME R-185 then climbing right turn to 9600 on heading 360° and DLN VOR/DME R-235 to DLN VOR/DME and hold.

ASOS <b>135.225</b>	SALT LAKE CENTER <b>132.4 338.3</b>	UNICOM <b>122.8 (CTAF) 0</b>
------------------------	--	---------------------------------



ELEV 5245



CATEGORY	A	B	C	D
<b>C</b> CIRCLING	8100-1¼ 2855 (2900-1¼)	8100-1½ 2855 (2900-1½)	8100-3	2855 (2900-3)

MIRL Rwy 17-35 and 4-22

NW-1, 23 JAN 2025 to 20 FEB 2025

NW-1, 23 JAN 2025 to 20 FEB 2025