

COPTER VOR RWY 36

DOTHAN RGNL (DHN)

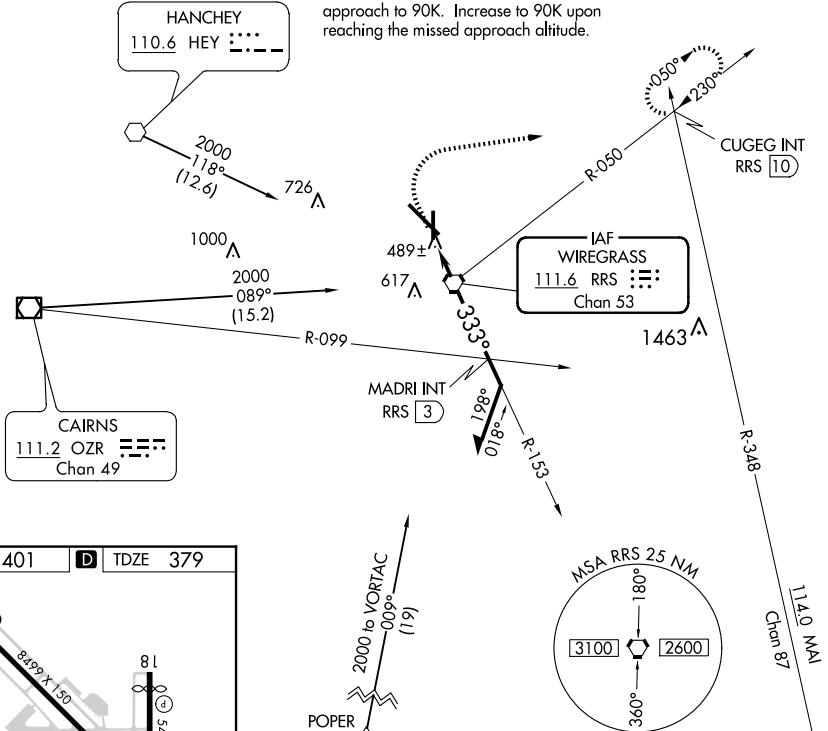
VORTAC RRS 111.6 Chan 53	APP CRS 333°	Rwy Idg TDZE Apt Elev	5000 379 401
---------------------------------------	------------------------	-----------------------------	---

▼ When local altimeter setting not received, use Cairns AAF (Fort Novosel) altimeter setting and increase all MDA 60 feet.

MISSED APPROACH: Climb to 900 then climbing right turn to 2000 on heading 080° and RRS VORTAC R-050 to CUGEG INT/RRS 10 DME and hold.

ATIS 135.725	CAIRNS APP CON ★ 125.4 327.125	DOTHAN TOWER ★ 118.4 (CTAF) 257.6	GND CON 121.7 348.6	UNICOM 122.95
------------------------	--	---	-------------------------------	-------------------------

Limit final and missed approach to 70K. Limit feeder, initial, and intermediate approach to 90K. Increase to 90K upon reaching the missed approach altitude.



SE-4, 23 JAN 2025 to 20 FEB 2025

SE-4, 23 JAN 2025 to 20 FEB 2025

ELEV 401	D	TDZE 379
REIL Rwy 18	REIL Rwy 14	HIRL Rwy 18-36
HIRL Rwy 14-32		
FAF to MAP 1.8 NM		
Knots	45	60
Min:Sec	2:24	1:48
	75	90
	1:26	1:12
	1:02	

900	2000	RRS R-050	CUGEG INT	RRS VORTAC	Remain within 5 NM
↑	hdg 080°				
				153°	
				333°	
				2000	
				1400	
				2000	
				3 NM	
				1.8 NM	
				COPTER	
CATEGORY	H-36			740-1	361 (400-1)