

WAAS CH 49118 W18A	APP CRS 183°	Rwy Idg TDZE Apt Elev	5000 393 401
--	------------------------	-----------------------------	---

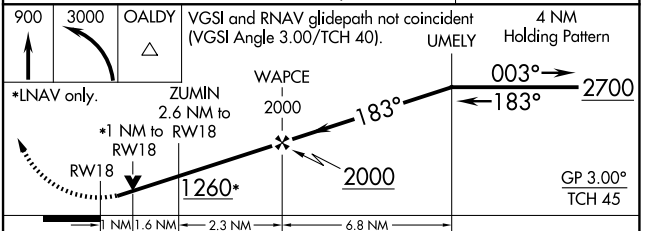
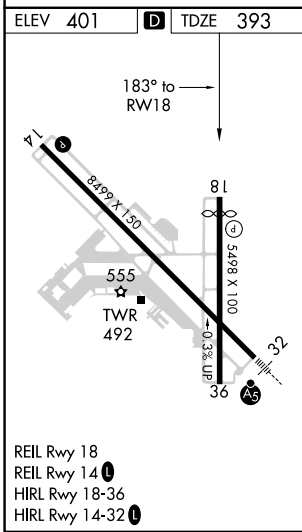
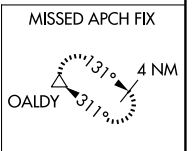
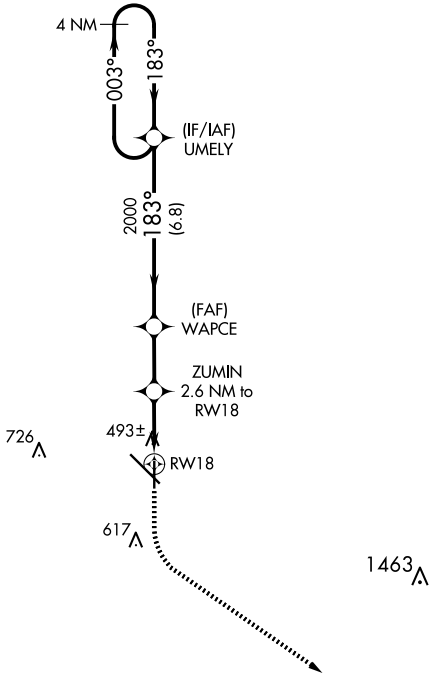
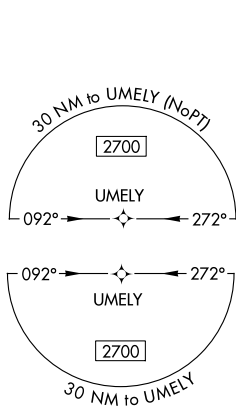
RNAV (GPS) RWY 18

DOTHAN RGNL (DHN)

▼ For uncompensated Baro-VNAV systems, LNAV/VNAV NA below -1.5°C (5°F) or above 41°C (105°F). DME/DME RNP-0.3 NA. Visibility reduction by helicopters NA.

MISSED APPROACH: Climb to 900 then climbing left turn to 3000 direct OALDY and hold.

ATIS 135.725	CAIRNS APP CON * 125.4 327.125	DOTHAN TOWER * 118.4 (CTAF) 0 257.6	GND CON 121.7 348.6	UNICOM 122.95
------------------------	--	---	-------------------------------	-------------------------



900	3000	OALDY	VGSi and RNAV glidepath not coincident (VGSi Angle 3.00/TCH 40).		4 NM Holding Pattern
*LNAV only.		ZUMIN 2.6 NM to RW18	WAPCE 2000	2700	GP 3.00° TCH 45
RW18		1.6 NM	2.3 NM	6.8 NM	
CATEGORY	A	B	C	D	
LPV DA		643-3/4	250 (300-3/4)		
LNAV/VNAV DA		674-7/8	281 (300-7/8)		
LNAV MDA		760-1	367 (400-1)		
CIRCLING	860-1	459 (500-1)	920-1 1/2 519 (600-1 1/2)	1040-2 639 (700-2)	

SE-4, 23 JAN 2025 to 20 FEB 2025

SE-4, 23 JAN 2025 to 20 FEB 2025