

VORTAC RRS <b>111.6</b> Chan <b>53</b>	APP CRS <b>335°</b>	Rwy Idg TDZE Apt Elev	<b>N/A</b> <b>N/A</b> <b>401</b>
--	------------------------	-----------------------------	--

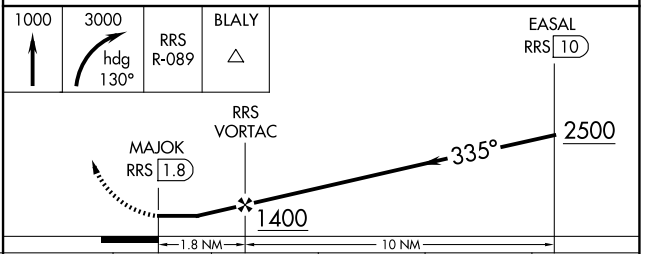
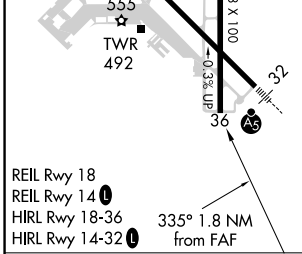
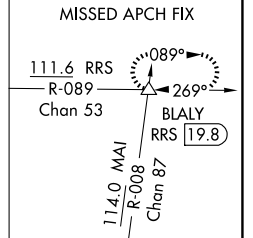
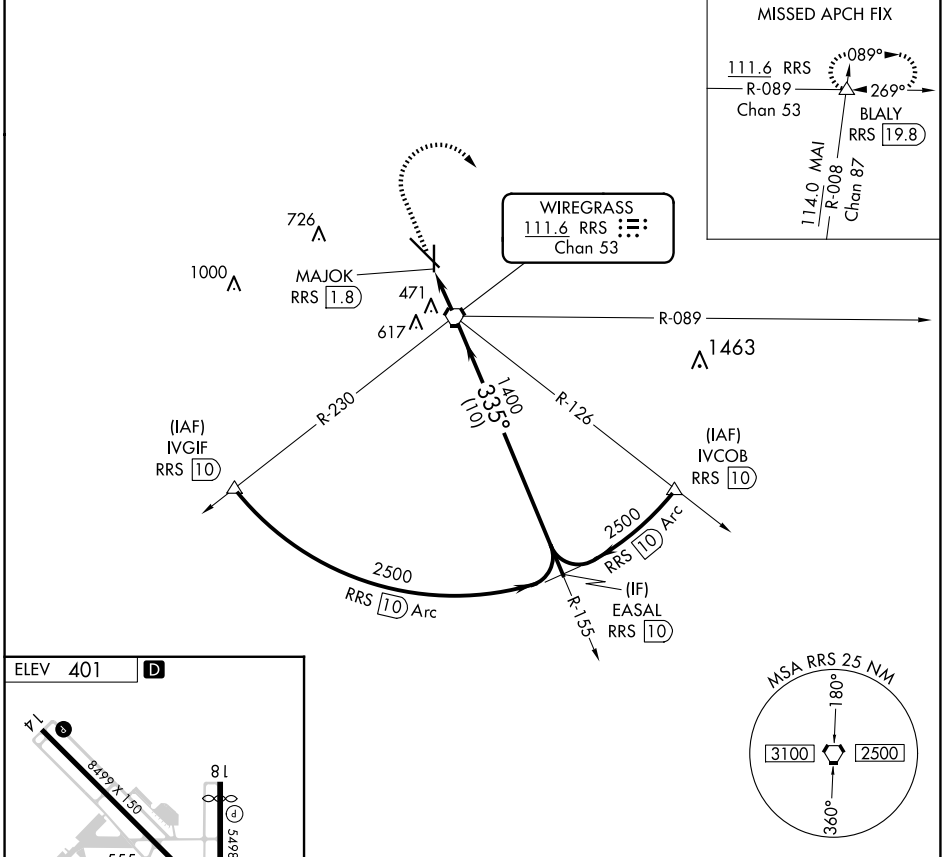
# VOR or TACAN-A

DOTHAN RGNL (DHN)

DME required.

MISSED APPROACH: Climb to 1000 then climbing right turn to 3000 on heading 130° and RRS VORTAC R-089 to BLALY INT/RRS 19.8 DME and hold.

ATIS <b>135.725</b>	CAIRNS APP CON ★ <b>125.4 327.125</b>	<b>DOTHAN TOWER★</b> <b>118.4 (CTAF) 0 257.6</b>	GND CON <b>121.7 348.6</b>	UNICOM <b>122.95</b>
------------------------	--	---	-------------------------------	-------------------------



FAF to MAP 1.8 NM					CATEGORY	A	B	C	D	E
Knots	60	90	120	150	180	860-1	459 (500-1)	920-1½	1040-2	1040-2¼
Min:Sec	1:48	1:12	0:54	0:43	0:36	860-1	459 (500-1)	519 (600-1½)	639 (700-2)	639 (700-2¼)

SE-4, 23 JAN 2025 to 20 FEB 2025

SE-4, 23 JAN 2025 to 20 FEB 2025