

FORT BLISS, TEXAS

# VOR or TACAN RWY 22

BIGGS AAF (KBIF)

EWM VORTAC <b>112.4</b> Chan <b>71</b>	APCH CRS <b>210°</b>	Rwy Idg <b>13,554</b> TDZE <b>3947</b> Arprt Elev <b>3947</b>
--	-------------------------	---

[USA]

<p><b>* Circling CAT DE not authorized W of Rwy 4-22.</b></p>		SSALR <b>A3</b>	<p>MISSED APPROACH: Climbing left turn to 8000 direct EWM VORTAC and hold, continue climb-in-hold to 8000. (TACAN only aircraft continue on EWM R-079 to PIERS INT/ EWM 9.8 DME and hold, continue climb-in-hold to 9000).</p>		
ATIS <b>120.0 254.3</b>	EL PASO APP CON S of V16 <b>119.15 353.5</b> N of V16 <b>124.25 298.85</b>	TOWER <b>127.9 342.25</b>	GND CON <b>121.6 251.125</b>	EL PASO CLNC DEL <b>125.0 379.1</b>	ASR

Use El Paso Intl altimeter setting.

Inop table does not apply.

Arrivals expect RADAR vectors to final when restricted areas are active.

TACAN only equipped aft:

Final apch from holding pattern not authorized.

RADAR vectors required to final approach course.

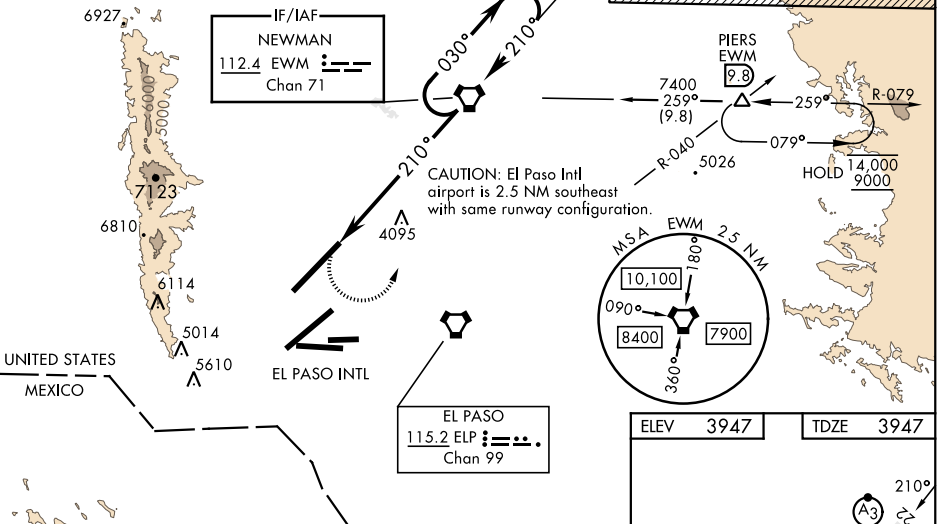
Procedure not authorized via V-560

eastbound without holding at PIERS.

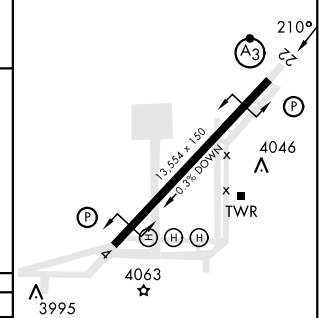
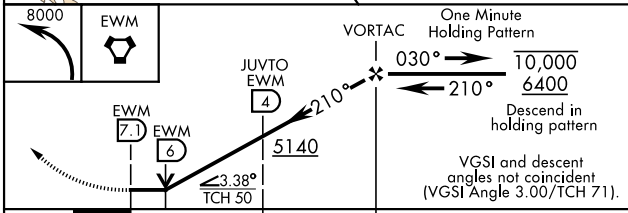
ATC clearance required.

Knots	60	120	180	240	300	360
V/V(fpm)	332	664	996	1328	1660	1992

Min climb of 332 ft/NM to 6400 - Controlling Obstacle Unk  
Climb grad does not apply to the TACAN only missed apch.



ELEV 3947	TDZE 3947
-----------	-----------



CATEGORY	A	B	C	D	E
S-22	5140-1¼	1193 (1200-1¼)			5140-3 1193(1200-3)
<b>C</b> CIRCLING *	5140-1¼ 1193 (1200-1¼)	5140-1½ 1193 (1200-1½)	5140-3 1193 (1200-3)	1193 (1200-3)	
JUVTU FIX MINIMUMS					
S-22	4380-1 433 (500-1)	4380-1¼ 433 (500-1¼)			

HIRL Rwy 4-22 REIL Rwy 4 and 22					
FAF to MAP 7.1 NM					
Knots	60	90	120	150	180
Min:Sec	7:06	4:44	3:33	2:50	2:22

FORT BLISS, TEXAS

31° 51' N - 106° 23' W

BIGGS AAF (KBIF)

Amdt 9 05OCT23

# VOR or TACAN RWY 22

SC-3, 23 JAN 2025 to 20 FEB 2025

SC-3, 23 JAN 2025 to 20 FEB 2025