

|  |                        |   |
|--|------------------------|---|
| WAAS<br>CH <b>82308</b><br><b>W21A</b> | APP CRS<br><b>207°</b> | Rwy Idg<br>TDZE <b>1276</b><br>Apt Elev <b>1276</b> |
|--|------------------------|---|

# RNAV (GPS) RWY 21

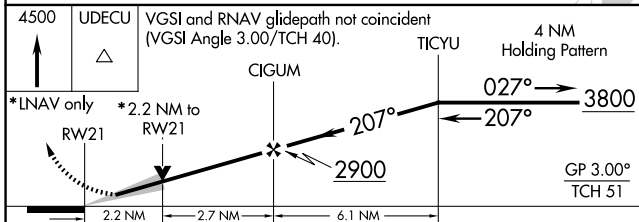
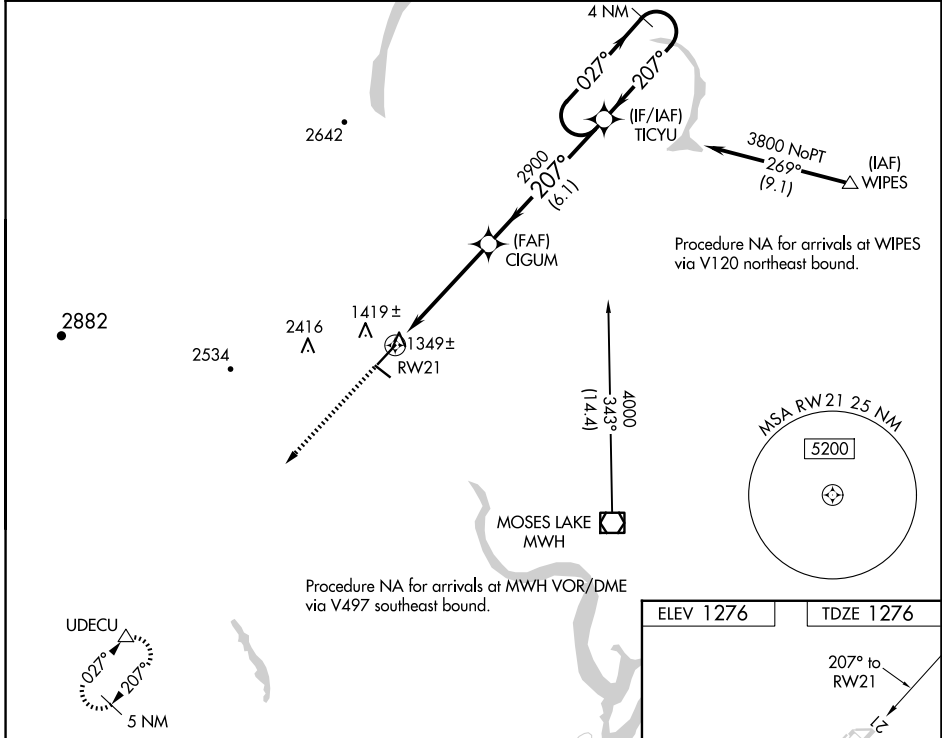
EPHRATA MUNI (EPH)

**RNP APCH.**

▼ For uncompensated Baro-VNAV systems, LNAV/VNAV NA below -17°C or above 46°C. VDP and Baro-VNAV NA when using Moses Lake/Grant County Intl altimeter setting. When local altimeter setting not received, use Moses Lake/Grant County Intl altimeter setting and increase all DA/MDA 40 feet; increase visibility LPV all Cats, and LNAV Cats C and D ¼ SM.

MISSED APPROACH: Climb to 4500 direct UDECU and hold.

|                        |   |                                 |
|------------------------|---|---------------------------------|
| ASOS<br><b>135.775</b> | GRANT COUNTY APP CON *<br><b>126.4 379.95</b> | UNICOM<br><b>122.8 (CTAF) 0</b> |
|------------------------|---|---------------------------------|



|               |                       |                         |                         |                         |
|---------------|-----------------------|-------------------------|-------------------------|-------------------------|
| CATEGORY      | A                     | B                       | C                       | D                       |
| LPV DA        |                       | 1526-¾                  | 250 (300-¾)             |                         |
| LNNAV/VNAV DA |                       | 2171-4                  | 895 (900-4)             |                         |
| LNNAV MDA     | 2020-1<br>744 (800-1) | 2020-1¼<br>744 (800-1¼) | 2020-2¼<br>744 (800-2¼) | 2020-2½<br>744 (800-2½) |

|           |           |
|-----------|-----------|
| ELEV 1276 | TDZE 1276 |
|-----------|-----------|

Diagram details: RWY 4-22 for gliders only. 1334, 3843 X 40, 5500 X 75, 0.3% GP, 3843 X 40. REIL Rwy 3, 11, 21 and 29. MIRL Rwy 11-29 and 3-21.

NW-1, 23 JAN 2025 to 20 FEB 2025

NW-1, 23 JAN 2025 to 20 FEB 2025