

VORTAC EPH <b>112.6</b> Chan <b>73</b>	APP CRS <b>202°</b>	Rwy ldg <b>5500</b> TDZE <b>1276</b> Apt Elev <b>1276</b>
--	------------------------	---

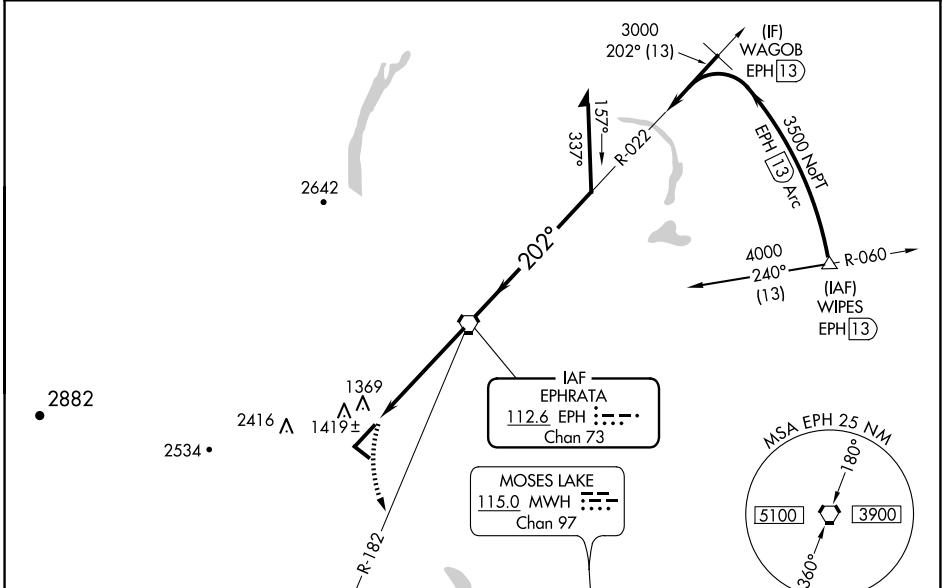
# VOR RWY 21

EPHRATA MUNI (EPH)

**⚠** When local altimeter setting not received, use Moses Lake/Grant County Intl altimeter setting and increase all MDA 40 feet, increase S-21 Cat D visibility ¼ mile. VDP NA when using Moses Lake/Grant County Intl altimeter setting. Final approach from EPH VORTAC holding pattern not authorized. Procedure turn required. Circling NA for Cats B, C and D northwest of Rwy 03-21.

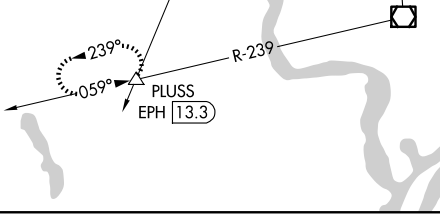
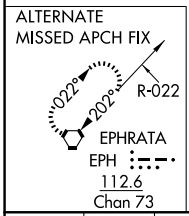
**MISSED APPROACH:** Climbing left turn to 4000 via EPH R-182 to PLUS Int/EPH 13.3 DME and hold. Continue climb-in-hold to 4000.

ASOS <b>135.775</b>	GRANT COUNTY APP CON* <b>126.4 379.95</b>	UNICOM <b>122.8 (CTAF) 1</b>
------------------------	--	---------------------------------

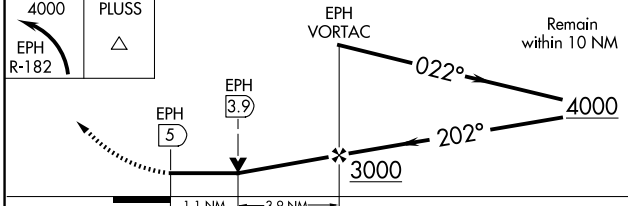
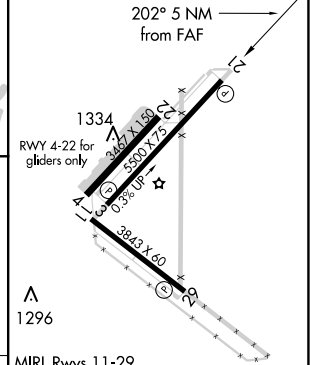


NW-1, 23 JAN 2025 to 20 FEB 2025

NW-1, 23 JAN 2025 to 20 FEB 2025



ELEV 1276	TDZE 1276
-----------	-----------



CATEGORY	A	B	C	D
S-21	1680-1	404 (500-1)	1680-1¼	404 (500-1¼)
CIRCLING	1740-1 464 (500-1)	1740-1 464 (500-1)	1780-1½ 504 (600-1½)	2500-3 1224 (1300-3)

MIRL Rwy 11-29 and 3-21 1	FAF to MAP 5 NM
REIL Rwy 3, 11, 21 and 29 1	
Knots	60 90 120 150 180
Min:Sec	5:00 3:20 2:30 2:00 1:40