

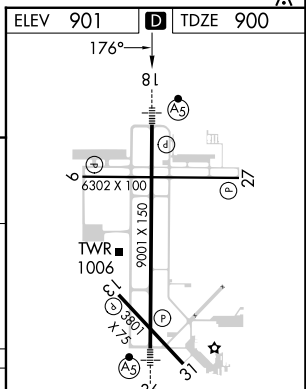
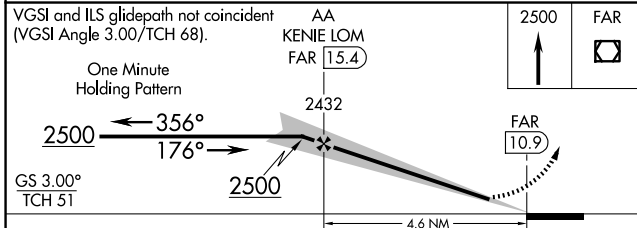
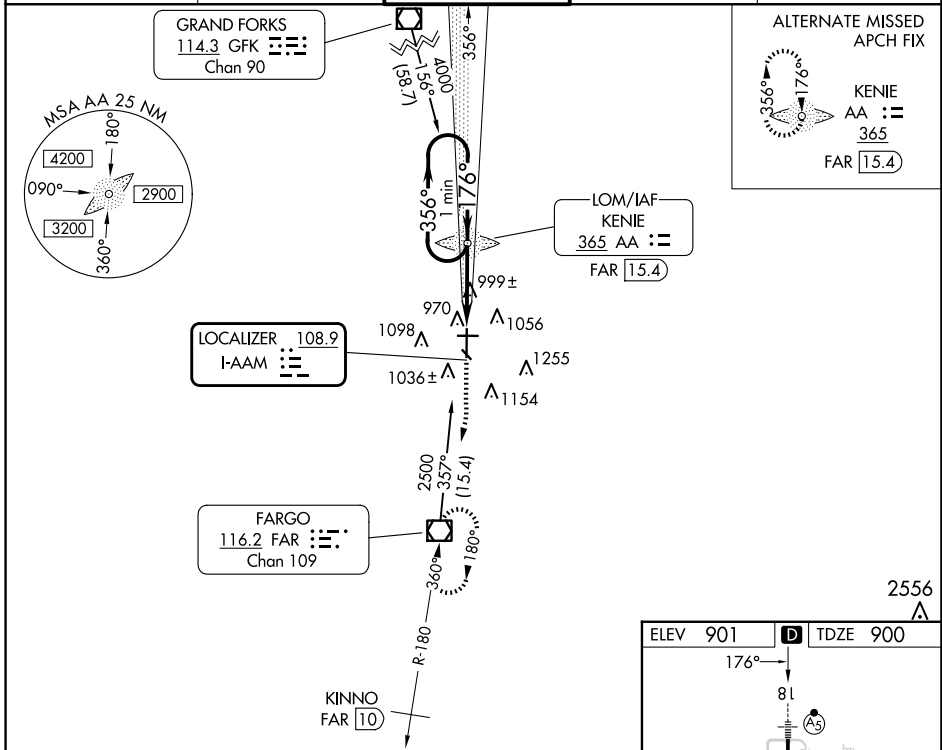
LOC I-AAM <b>108.9</b>	APP CRS <b>176°</b>	Rwy Idg 9001	TDZE 900	Apt Elev 901
---------------------------	------------------------	-----------------	-------------	-----------------

# ILS or LOC RWY 18

HECTOR INTL (FAR)

ADF or DME required for procedure entry.		MALSR 	MISSED APPROACH: Climb to 2500 direct FAR VOR/DME and hold.
For inop MALSR, increase S-ILS 18 Cat E visibility to RVR 4000, and S-LOC 18 Cat E visibility to RVR 5000. * Visibility Cat A/B/C/D RVR 1800 authorized with the use of FD or AP or HUD to DA.			

ATIS <b>124.5 379.2</b>	FARGO APP CON <b>120.4 377.15</b>	FARGO TOWER <b>133.8 290.4</b>	GND CON <b>121.9 348.6</b>	CLNC DEL <b>121.9 348.6</b>
----------------------------	--------------------------------------	-----------------------------------	-------------------------------	--------------------------------



CATEGORY	A	B	C	D	E	HIRL Rwy 18-36 REIL Rwy 9 and 27 MRL Rwy 9-27 and 13-31 FAF to MAP 4.6 NM
S-ILS 18*	1100/24 200 (200-½)					
S-LOC 18	1260/24	360 (400-½)	1260/40	360 (400-¾)		
CIRCLING	1380-1	479 (500-1)	1520-1¾ 619 (700-1¾)	1620-2¼ 719 (800-2¼)	1620-2½ 719 (800-2½)	
	Knots	60	90	120	150	180
	Min:Sec	4:36	3:04	2:18	1:50	1:32

NC-1, 23 JAN 2025 to 20 FEB 2025

NC-1, 23 JAN 2025 to 20 FEB 2025