

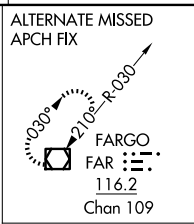
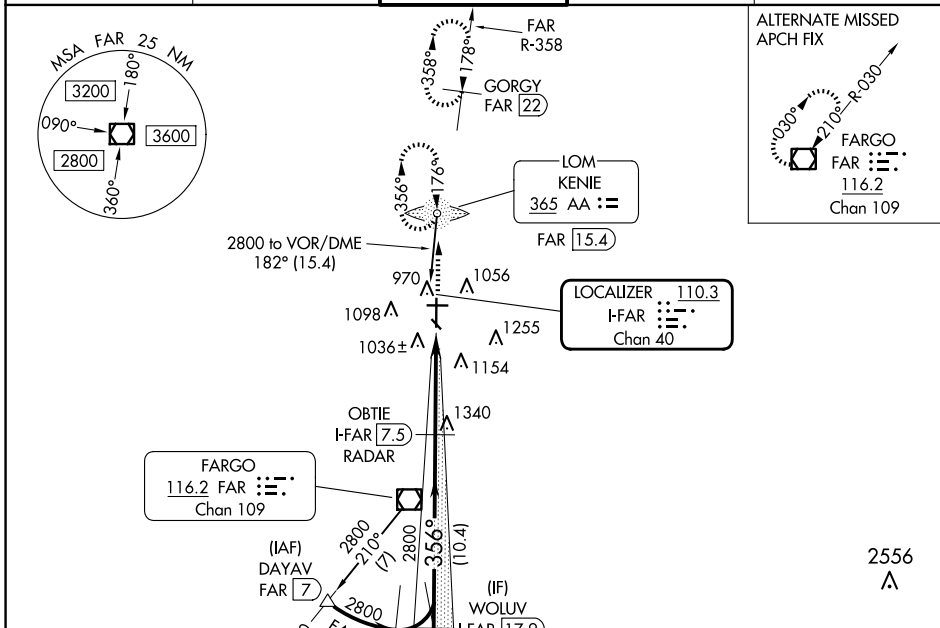
LOC/DME I-FAR 110.3 Chan 40	APP CRS 356°	Rwy Idg TDZE Apt Elev	9001 899 901
-------------------------------------------------	------------------------	-----------------------------	-----------------------------------------

ILS or LOC RWY 36

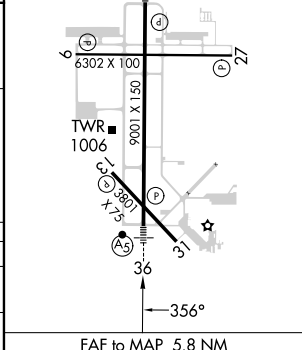
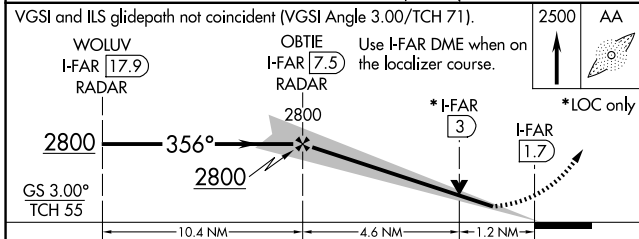
HECTOR INTL (F.A.R.)

ADF or DME required for procedure entry. ADF or DME required.	MALSR 	MISSED APPROACH: Climb to 2500 direct KENIE LOM and hold (DME aircraft climb to 4000 on FAR VOR/DME R-358 to GORGY/22 DME and hold N, RT, 178° inbound, continue climb-in-hold to 4000).
 For inop ALS increase S-ILS 36 Cat E visibility to RVR 4000 and S-LOC 36 Cat C/D/E visibility to 1 3/8 SM. #RVR 1800 authorized with use of FD or AP or HUD to DA.		

ATIS 124.5 379.2	FARGO APP CON 120.4 377.15	FARGO TOWER 133.8 290.4	GND CON 121.9 348.6	CINC DEL 121.9 348.6
----------------------------	--------------------------------------	-----------------------------------	-------------------------------	--------------------------------



ELEV 901	TDZE 899
MIRL Rwy 9-27 and 13-31 REIL Rwy 9 and 27 HIRL Rwy 18-36 81	



CATEGORY	A	B	C	D	E	
S-ILS 36#	1099/24 200 (200-1/2)					
S-LOC 36	1360/24	461 (500-1/2)	1360/50	461 (500-1)		
CIRCLING	1380-1	479 (500-1)	1520-1 3/4 619 (700-1 3/4)	1620-2 1/4 719 (800-2 1/4)	1620-2 1/2 719 (800-2 1/2)	
	Knots	60	90	120	150	180
	Min:Sec	5:48	3:52	2:54	2:19	1:56

NC-1, 23 JAN 2025 to 20 FEB 2025

NC-1, 23 JAN 2025 to 20 FEB 2025