

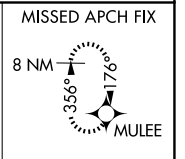
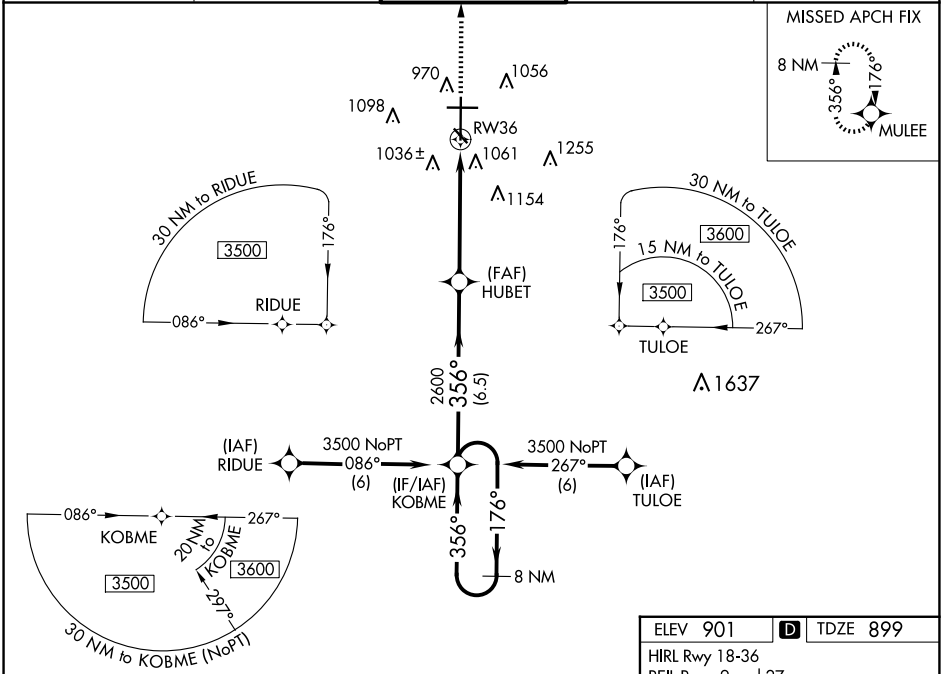
WAAS CH 50106 W36A	APP CRS 356°	Rwy Idg TDZE Apt Elev	9001 899 901
--	------------------------	-----------------------------	---

RNAV (GPS) RWY 36

HECTOR INTL (F.A.R.)

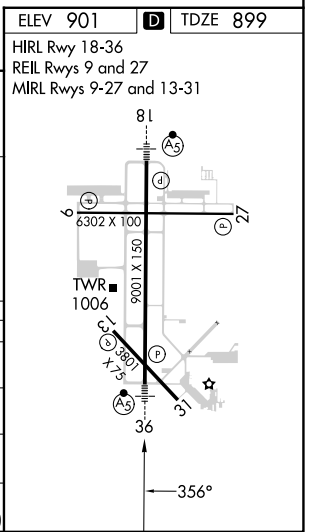
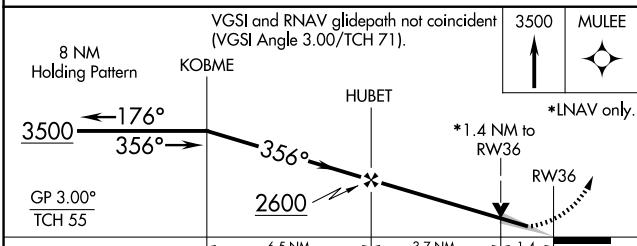
RNP APCH. ⚠ Baro-VNAV NA below -16°C (4°F). For inop MALSR, increase LPV Cat E visibility to RVR 4000, and increase LNAV/VNAV and LNAV Cat E visibility to 1½ mile.	MALSR 	MISSED APPROACH: Climb to 3500 direct MULEE and hold.
--	-----------	---

ATIS 124.5 379.2	FARGO APP CON 120.4 377.15	FARGO TOWER 133.8 290.4	GND CON 121.9 348.6	CLNC DEL 121.9 348.6
----------------------------	--------------------------------------	-----------------------------------	-------------------------------	--------------------------------



NC-1, 23 JAN 2025 to 20 FEB 2025

NC-1, 23 JAN 2025 to 20 FEB 2025



CATEGORY	A	B	C	D	E
LPV DA	1150/24 251 (300-½)				
LNAV/VNAV DA	1360/50 461 (500-1)				1360/60 461 (500-1¼)
LNAV MDA	1420/24	521 (600-½)	1420/50 521 (600-1)	1420/60	521 (600-1¼)
C CIRCLING	1420-1	519 (600-1)	1520-1¾ 619 (700-1¾)	1620-2¼ 719 (800-2¼)	1620-2½ 719 (800-2½)