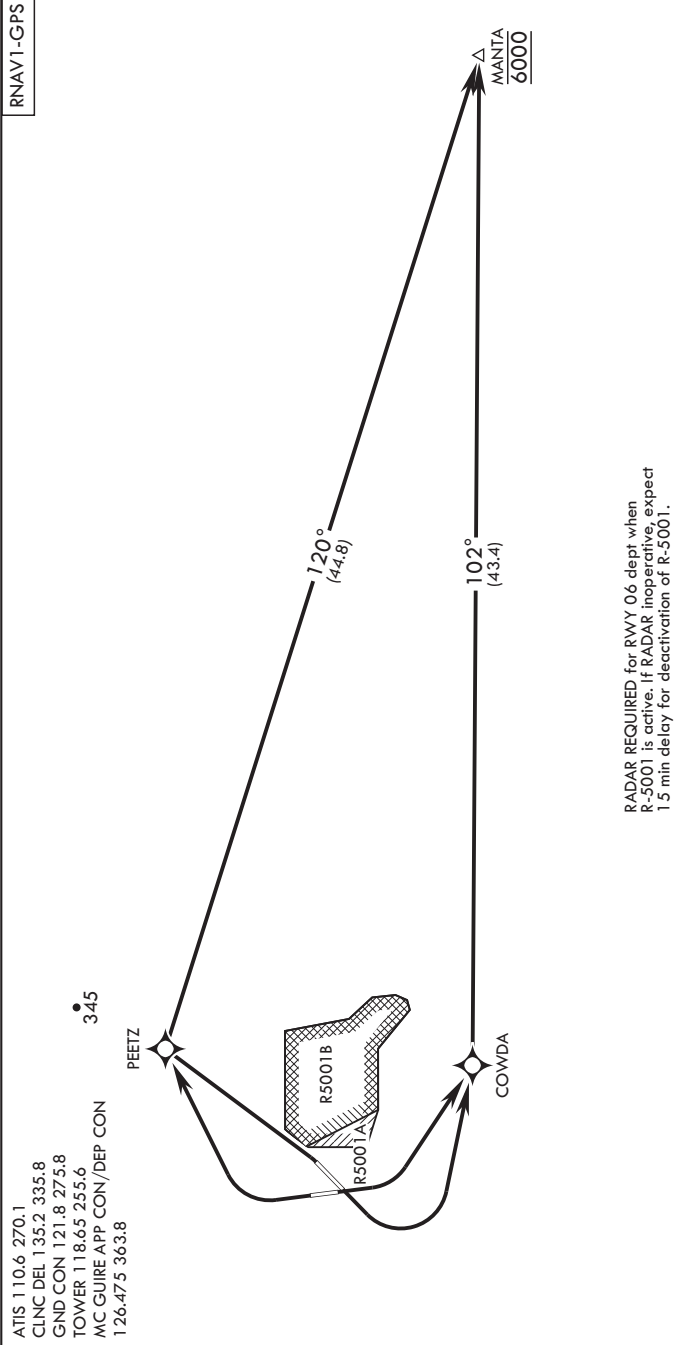


NE-2, 23 JAN 2025 to 20 FEB 2025



ATIS 110.6 270.1
 CLNC DEL 135.2 335.8
 GND CON 121.8 275.8
 TOWER 118.65 255.6
 MC GUIRE APP CON/DEP CON
 126.475 363.8

PEETZ

COWDA

MANTA
6000

RADAR REQUIRED for RWY 06 dept when R-5001 is active. If RADAR inoperative, expect 1.5 min delay for deactivation of R-5001.

DEPARTURE ROUTE DESCRIPTION

- TAKEOFF RWY 06: Climb direct PEETZ, thence...
- TAKEOFF RWY 18: Climbing left turn direct COWDA, thence...
- TAKEOFF RWY 24: Climbing left turn direct COWDA, thence...
- TAKEOFF RWY 36: Climbing right turn direct PEETZ, thence...
- ...track and climb as depicted. Maintain 6000 or higher as assigned.

NE-2, 23 JAN 2025 to 20 FEB 2025