

WRIGHTSTOWN, NEW JERSEY

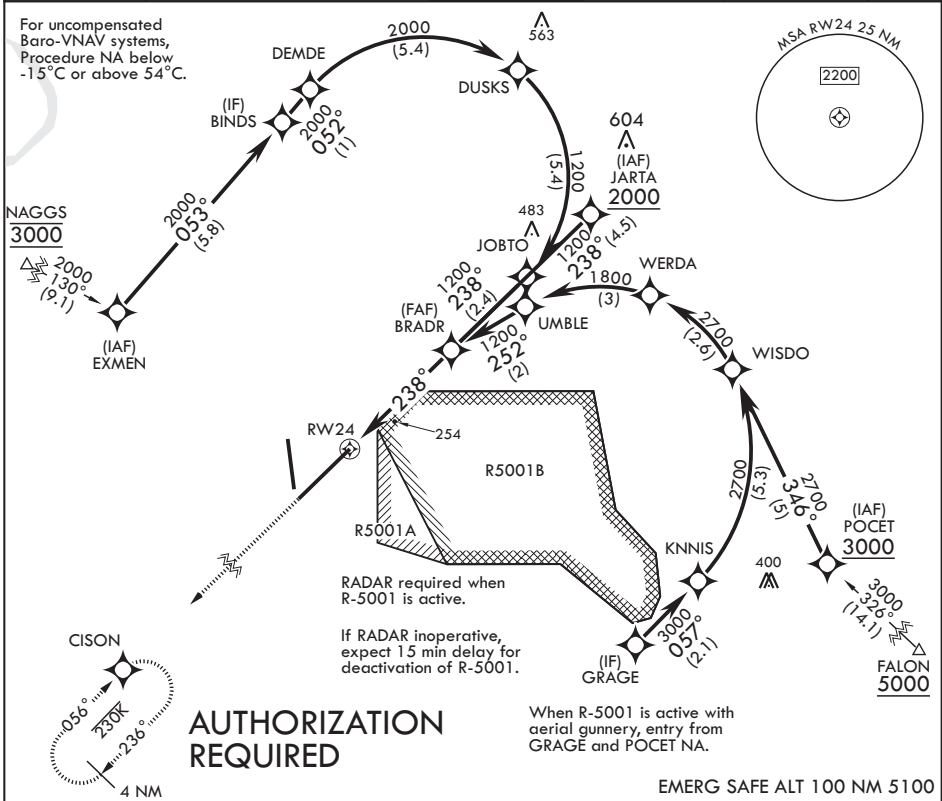
# RNAV (RNP) Z RWY 24

APCH CRS	Rwy Idg	10,014
238°	TDZE	117
	Arpt Elev	141

AL-150 (USAF)  
 MC GUIRE FIELD (JOINT BASE MC GUIRE DIX LAKEHURST) (KWRI)

RNP AR APCH. From EXMEN and GRAGE: RF.	ALSF-1	MISSED APPROACH: Climb to 2100 on track 238° to CISON and hold, continue to climb-in-hold to 2100.
<p>▼ * When ALS inop increase RVR to 50, vis to 1 mile.          ** When ALS inop increase vis to 1 3/8 miles.</p>		

ATIS	MC GUIRE APP CON/DEP CON	TOWER	GND CON	CLNC DEL	PAR
110.6 270.1	126.475 363.8	118.65 255.6	121.8 275.8	135.2 335.8	

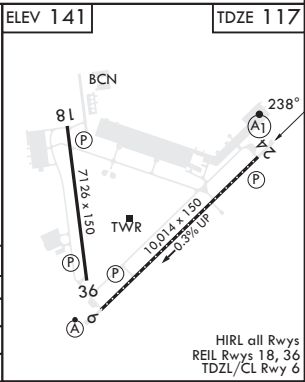
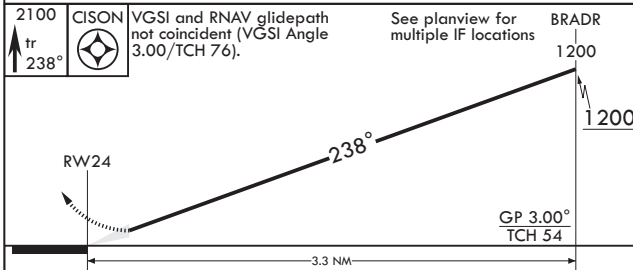


NE-2, 23 JAN 2025 to 20 FEB 2025

NE-2, 23 JAN 2025 to 20 FEB 2025

## AUTHORIZATION REQUIRED

EMERG SAFE ALT 100 NM 5100



CATEGORY	A	B	C	D
RNP 0.10 DA*	449/26	332	(400-½)	
RNP 0.13 DA*	456/26	339	(400-½)	
RNP 0.30 DA**	593/50	476	(500-1)	

WRIGHTSTOWN, NEW JERSEY

MC GUIRE FIELD (JOINT BASE MC GUIRE DIX LAKEHURST) (KWRI)

Orig 20APR23

40°01'N - 74°36'W

# RNAV (RNP) Z RWY 24

HIRL all Rwys  
 REIL Rws 18, 36  
 TDZL/CL Rwy 6