

MC GUIRE FLD, (JOINT BASE MC GUIRE DIX LAKEHURST) (KWRI)  
**THMAS TWO DEPARTURE (RNAV) (THMAS2• LEEAH)** WRIGHTSTOWN, NEW JERSEY

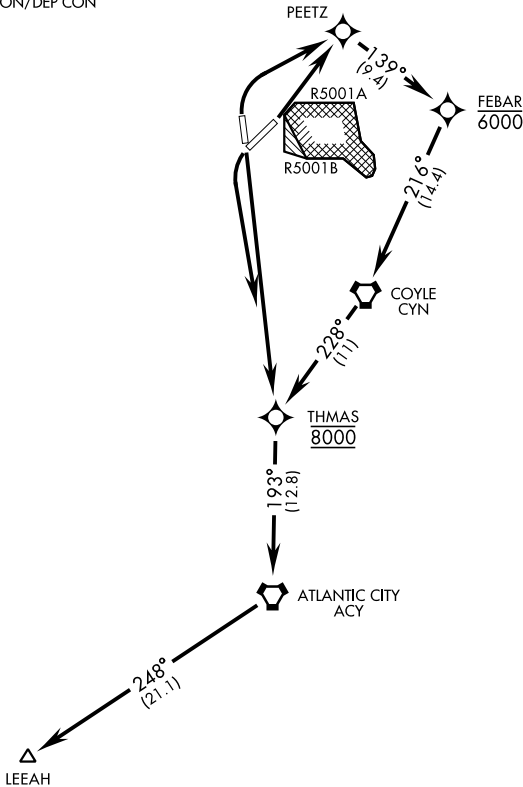
ATIS 110.6 270.1  
 CLNC DEL  
 135.2 335.8  
 GND CON  
 121.8 275.8  
 TOWER  
 118.65 255.6  
 MC GUIRE APP CON/DEP CON  
 126.475 363.8

AL-150 [USAF]

RNAV1-GPS

Rwy	Knots	60	120	180	240	300	360
06	V/V(fpm)	237	474	711	948	1185	1422
18	V/V(fpm)	387	774	1161	1548	1935	2322
24	V/V(fpm)	384	768	1152	1536	1920	2304
36	V/V(fpm)	213	426	639	852	1065	1278

ATC Climb Rate to 8000



Rwy 06 Departure: RADAR required (when R-5001 is active)  
 If RADAR inoperative, expect 15 min delay for deactivation of R-5001.

NE-2, 23 JAN 2025 to 20 FEB 2025

NE-2, 23 JAN 2025 to 20 FEB 2025



DEPARTURE ROUTE DESCRIPTION

TAKEOFF RWY 06: Climb direct PEETZ then track and climb as depicted. Maintain 8000.

TAKEOFF RWY 18: Climb direct to cross THMAS at and maintain 8000, then track as depicted.

TAKEOFF RWY 24: Climbing left turn direct to cross THMAS at and maintain 8000, then track as depicted.

TAKEOFF RWY 36: Climbing right turn direct PEETZ then track and climb as depicted. Maintain 8000.

Expect further ATC clearance to filed altitude within 10 minutes after departure.

**THMAS TWO DEPARTURE (RNAV) (THMAS2• LEEAH)** WRIGHTSTOWN, NEW JERSEY