

VOR/DME or TACAN RWY 6

MC GUIRE FLD,
R-063 to CUGON, expect further clearance from ATC.

VORTAC GXU 110.6 Chan 43	APCH CRS 044°	Rwy Idg 10,014 TDZE 131 Arprt Elev 141
--	-------------------------	---

AL-150 [USAF]

(JOINT BASE MC GUIRE DIX LAKEHURST) (KWRI)

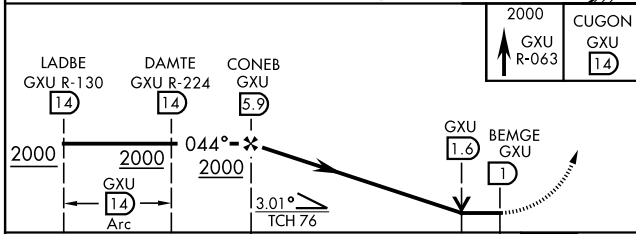
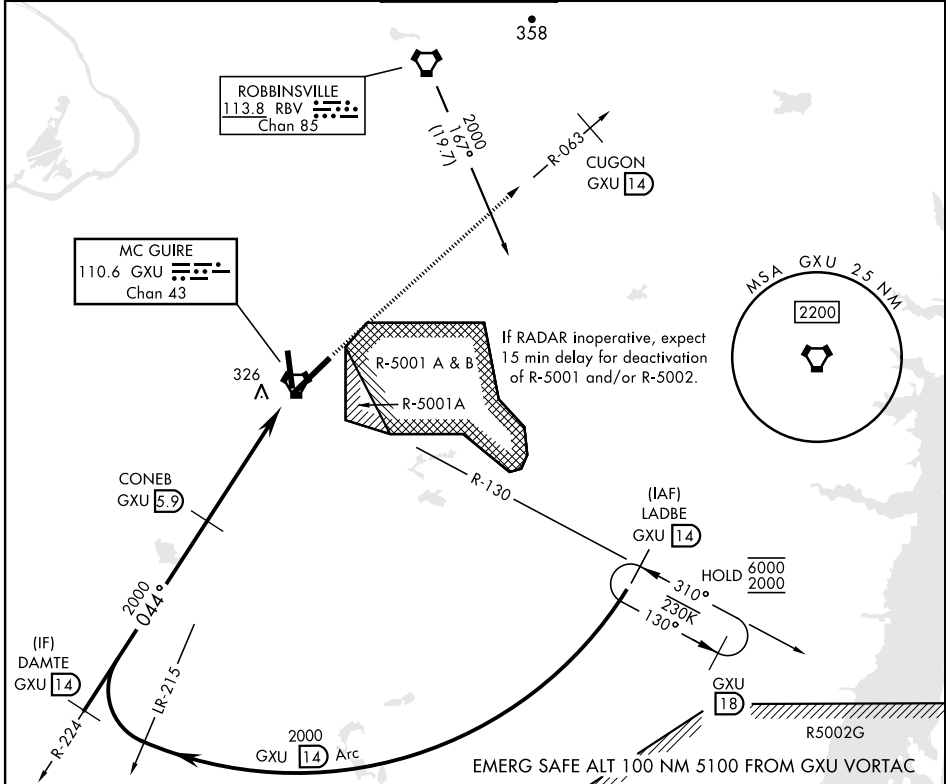
RADAR required when R-5001 and/or R-5002 is active.



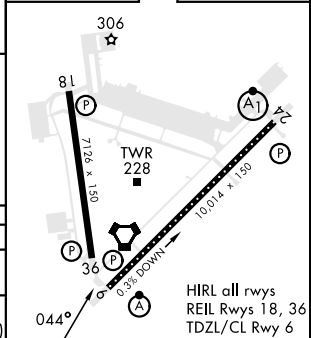
MISSED APPROACH: Climb to 2000 via GXU VORTAC R-063 to CUGON, expect further clearance from ATC.

▼ * When ALS inop, increase CAT AB RVR to 55 and vis to 1 mile, CAT CDE vis to 1 3/8 miles.
** Circling NA SE of RWY 24 and E of RWY 36 when R-5001 A/B active.

ATIS 110.6 270.1	MC GUIRE APP CON/DEP CON 126.475 363.8	MC GUIRE TOWER 118.65 255.6	GND CON 121.8 275.8	CLNC DEL 135.2 335.8	PAR
----------------------------	--	---------------------------------------	-------------------------------	--------------------------------	-----



2000	CUGON GXU 14	ELEV 141	TDZE 131
------	--------------------	----------	----------



CATEGORY	A	B	C	D	E
S-6 *	640/24 509 (500-1/2)		640/55 509	(500-1)	
CIRCLING **	680-1 539 (600-1)		700-1 1/2 559 (600-1 1/2)	700-2 559 (600-2)	1200-3 1059 (1100-3)

VOR/DME or TACAN RWY 6

NE-2, 23 JAN 2025 to 20 FEB 2025

NE-2, 23 JAN 2025 to 20 FEB 2025