

VOR/DME RWY 15

VOR/DME FTK 109.6 Chan 33	APCH CRS 146°	Rwy Ildg TDZE 4853 754 Arprt Elev 754
---	-------------------------	---

AL-151 [USA]

GODMAN AAF (KFTK)

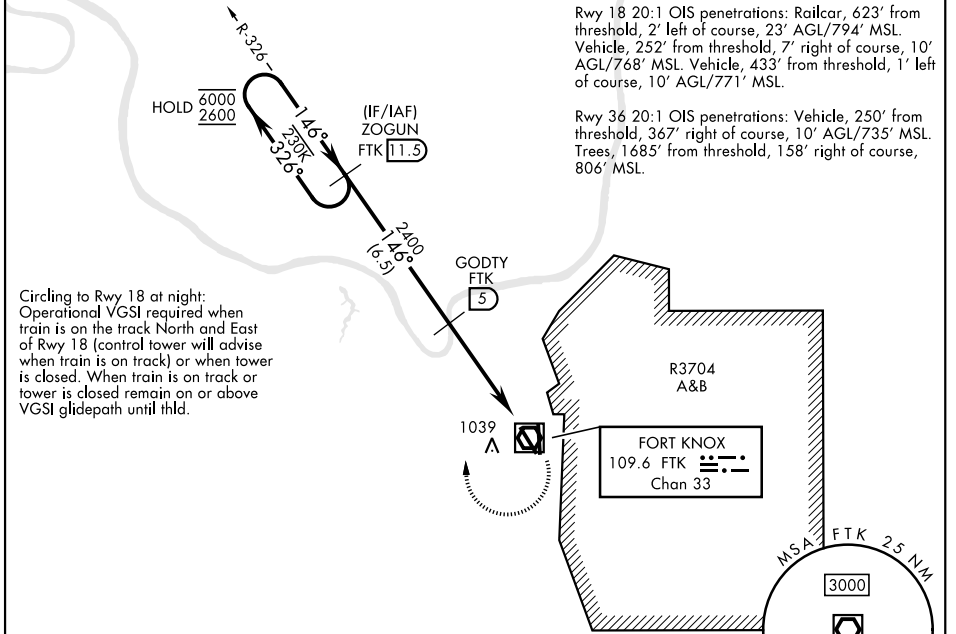
<p>▼ * NA at night. Visibility reduction by helicopters NA.</p>		<p>MISSED APPROACH: Climb to 1300, then climbing right turn to 2600 on heading 356° and FTK VOR/DME R-326 to ZOGUN INT/FTK 11.5 DME and hold.</p>	
<p>ATIS 109.6</p>	<p>LOUISVILLE APP CON 132.075 327.0</p>	<p>TOWER ★ 133.35 (CTAF) 0</p>	<p>GND CON 121.9 239.3</p>

** Circling NA E of Rwy 18-36. When circling to Rwy 36 at night, operational VGSi required, remain on or above VGSi glidepath until threshold.

Rwy 15 20:1 OIS penetration: Trees, 2107' from threshold, on course, 853' MSL.

Rwy 18 20:1 OIS penetrations: Railcar, 623' from threshold, 2' left of course, 23' AGL/794' MSL. Vehicle, 252' from threshold, 7' right of course, 10' AGL/768' MSL. Vehicle, 433' from threshold, 1' left of course, 10' AGL/771' MSL.

Rwy 36 20:1 OIS penetrations: Vehicle, 250' from threshold, 367' right of course, 10' AGL/735' MSL. Trees, 1685' from threshold, 158' right of course, 806' MSL.



SE-1, 23 JAN 2025 to 20 FEB 2025

SE-1, 23 JAN 2025 to 20 FEB 2025

ELEV 754	TDZE 754
----------	----------

HIRL Rwy 18-36 (P) 36
MIRL Rwy 15-33
REIL Rwy 15
REIL Rwy 18 (P)

FAF to MAP 4.6 NM

Knots	60	90	120	150	180
Min:Sec	4:36	3:04	2:18	1:50	1:32

	1027		1300		2600			
	ZOGUN 11.5		GODTY 5		VOR/DME			
	2600 ← 326°		146° →		2400			
	One Minute Holding Pattern		3.30° TCH 45		4.6 NM			
CATEGORY	A		B		C		D	
S-15*	1240-1 486 (500-1)		1240-1 3/8 486 (500-1 3/8)					
CIRCLING**	1340-1 586 (600-1)		1340-1 1/2 586 (600-1 1/2)		1340-2 586 (600-2)			

VOR/DME RWY 15