

FORT KNOX, KENTUCKY

VOR/DME RWY 36

VOR/DME FTK 109.6 Chan 33	APCH CRS 349°	Rwy ldg TDZE 5184 740 Arprt Elev 754
---	-------------------------	--

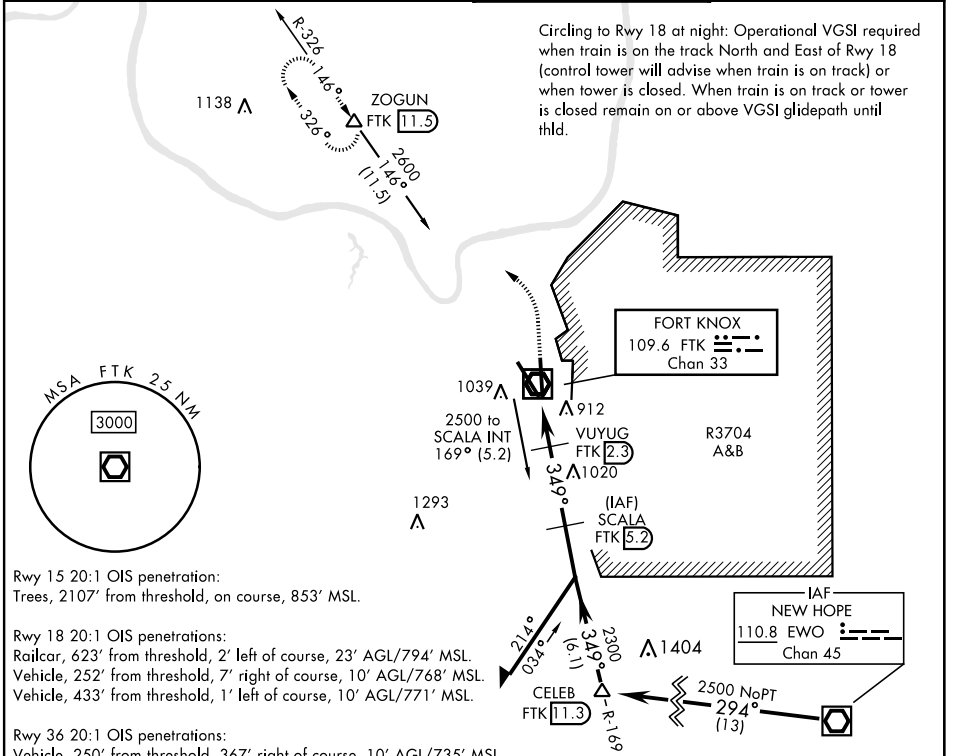
AL-151 [USA]

GODMAN AAF (KFTK)

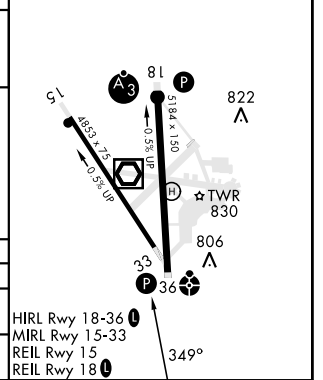
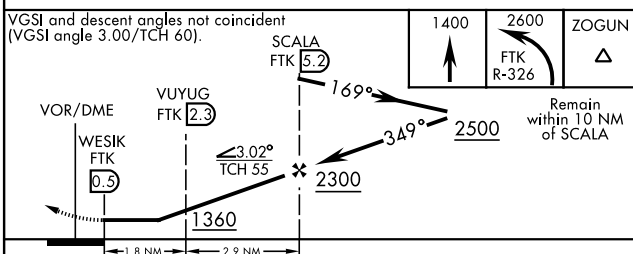
▼ * At night, operational VGSI required, remain on or above VGSI glidepath until threshold.
 Visibility reduction by helicopters not authorized.
 ** Circling NA E of Rwy 18-36. Circling to rwy 15 NA at night.

ODALS
 MISSED APPROACH: Climb to 1400, then climbing left turn to 2600 on FTK VOR/DME R-326 to ZOGUN INT/FTK 11.5 DME and hold.

ATIS 109.6	LOUISVILLE APP CON 132.075 327.0	TOWER ★ 133.35 (CTAF) 0	GND CON 121.9 239.3
----------------------	--	--	-------------------------------



ELEV 754	TDZE 740
-----------------	-----------------



CATEGORY	A	B	C	D
S-36*	1180-1 440 (500-1)		1180-1¼ 440 (500-1¼)	
CIRCLING**	1340-1 586 (600-1)		1340-1½ 586 (600-1½)	1340-2 586 (600-2)

HIRL Rwy 18-36 **0**
 MIRL Rwy 15-33 **0**
 REIL Rwy 15 **0**
 REIL Rwy 18 **0**

FORT KNOX, KENTUCKY
Amdt 2 10AUG23

37°54'N-85°58'W

GODMAN AAF (KFTK)

VOR/DME RWY 36

SE-1, 23 JAN 2025 to 20 FEB 2025

SE-1, 23 JAN 2025 to 20 FEB 2025