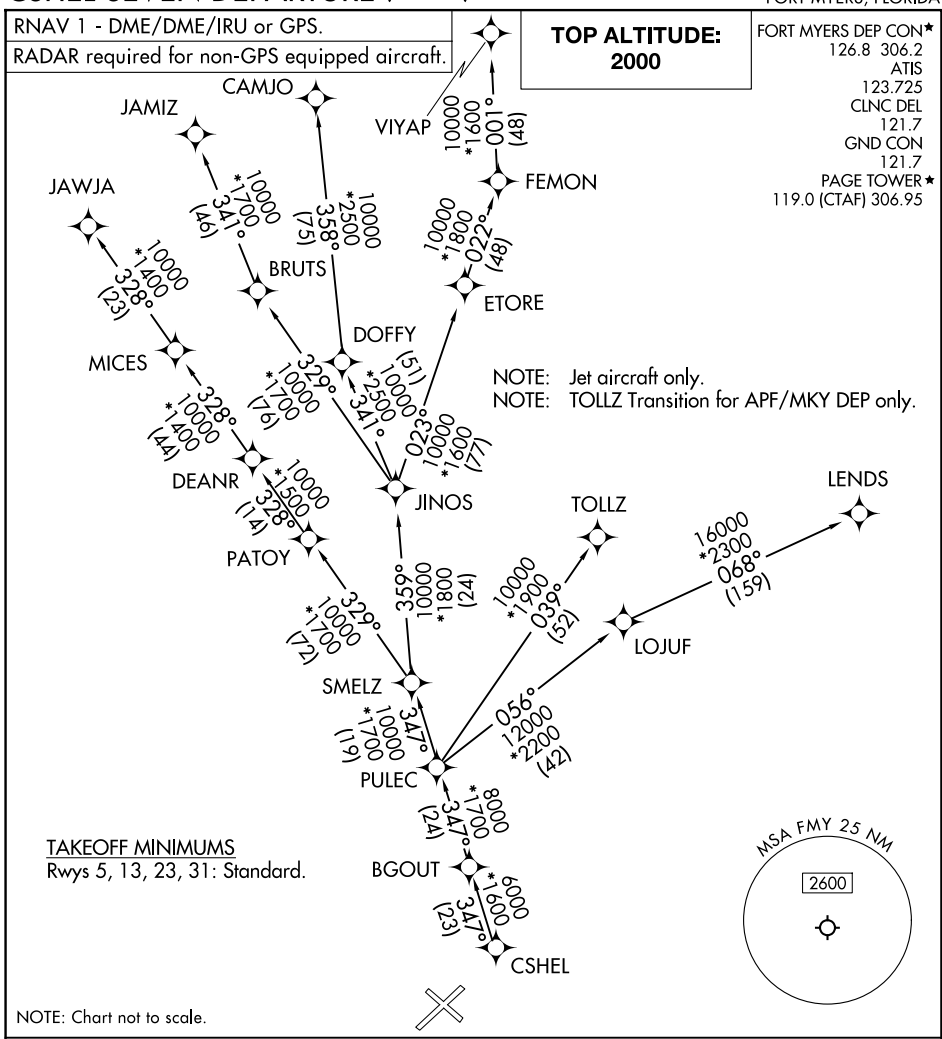


# CSHEL SEVEN DEPARTURE (RNAV)



SE-3, 23 JAN 2025 to 20 FEB 2025

SE-3, 23 JAN 2025 to 20 FEB 2025

## DEPARTURE ROUTE DESCRIPTION

**TAKEOFF RUNWAYS 5, 13, 23, 31:** Climb on assigned heading for RADAR vectors to CSHEL, thence...

... on assigned transition. Maintain 2000. Expect clearance to filed altitude within 10 minutes after departure.

CAMJO TRANSITION (CSHEL7.CAMJO)

JAMIZ TRANSITION (CSHEL7.JAMIZ)

JAWJA TRANSITION (CSHEL7.JAWJA)

LEND S TRANSITION (CSHEL7.LEND S)

TOLLZ TRANSITION (CSHEL7.TOLLZ)

VIYAP TRANSITION (CSHEL7.VIYAP)

# CSHEL SEVEN DEPARTURE (RNAV)